



SZABO SCANDIC

Part of Europa Biosite

Produktinformation



Forschungsprodukte & Biochemikalien



Zellkultur & Verbrauchsmaterial



Diagnostik & molekulare Diagnostik



Laborgeräte & Service

Weitere Information auf den folgenden Seiten!
See the following pages for more information!



Lieferung & Zahlungsart

siehe unsere [Liefer- und Versandbedingungen](#)

Zuschläge

- Mindermengenzuschlag
- Trockeneiszuschlag
- Gefahrgutzuschlag
- Expressversand

SZABO-SCANDIC HandelsgmbH

Quellenstraße 110, A-1100 Wien

T. +43(0)1 489 3961-0

F. +43(0)1 489 3961-7

mail@szabo-scandic.com

www.szabo-scandic.com

[linkedin.com/company/szaboscandic](https://www.linkedin.com/company/szaboscandic) 

ENO3 monoclonal antibody (M01), clone 5D1

Catalog # : H00002027-M01

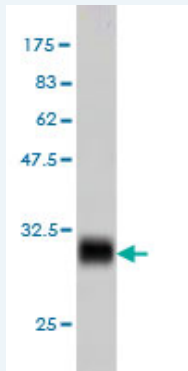
規格 : [100 ug]

[List All](#)

Specification

Product Description:	Mouse monoclonal antibody raised against a partial recombinant ENO3.
Immunogen:	ENO3 (NP_001967, 228 a.a. ~ 277 a.a) partial recombinant protein with GST tag. MW of the GST tag alone is 26 KDa.
Sequence:	KTAIQAAGYPDKVWIGMDVAASEFYRNGKYDLDFKSPDDPARHITGEKLG
Host:	Mouse
Reactivity:	Human
Isotype:	IgG2a Kappa

Quality Control Testing: Antibody Reactive Against Recombinant Protein.



Western Blot detection against Immunogen (31.24 KDa) .

Storage Buffer: In 1x PBS, pH 7.4

Storage Instruction: Store at -20°C or lower. Aliquot to avoid repeated freezing and thawing.

MSDS: [Download](#)

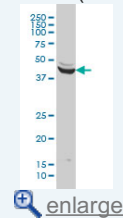
Datasheet: [Download](#)

Publication Reference

- [Human skeletal muscle fibre contractile properties and proteomic profile: Adaptations to 3-week unilateral lower limb suspension and active recovery.](#)
Brocca L, Longa E, Cannavino J, Seynnes O, de Vito G, McPhee J, Narici M, Pellegrino MA, Bottinelli R. J Physiol. 2015 Sep 15. [Epub ahead of print]
- [Inverse relationships between biomarkers and beef tenderness according to contractile and metabolic properties of the muscle.](#)
Picard B, Gagaoua M, Micol D, Cassar-Malek I, Hocquette JF, Terlouw CEJ Agric Food Chem. 2014 Sep 1.
- [The time course of the adaptations of human muscle proteome to bed rest and the underlying mechanisms.](#)
Brocca L, Cannavino J, Coletto L, Biolo G, Sandri M, Bottinelli R, Pellegrino MA. J

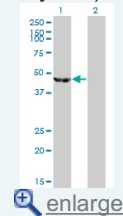
Application Image

Western Blot (Cell lysate)



[enlarge](#)

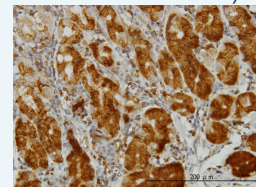
Western Blot (Transfected lysate)



[enlarge](#)

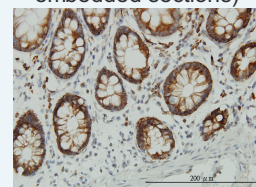
Western Blot (Recombinant protein)

Immunohistochemistry (Formalin/PFA-fixed paraffin-embedded sections)



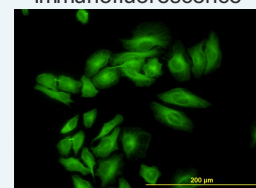
[enlarge](#)

Immunohistochemistry (Formalin/PFA-fixed paraffin-embedded sections)



[enlarge](#)

Immunofluorescence



[enlarge](#)

Sandwich ELISA (Recombinant protein)

4. Functional analysis of beef tenderness.

Guillemin N, Bonnet M, Jurie C, Picard B.J Proteomics. 2011 Aug 9. [Epub ahead of print]

5. Myomegalin is a novel A-kinase anchoring protein involved in the phosphorylation of cardiac myosin binding protein C.

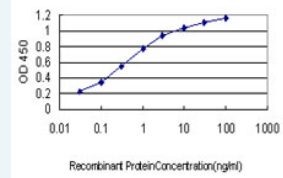
Uys GM, Ramburan A, Loos B, Kinnear CJ, Korkie LJ, Mouton J, Riedemann J, Moolman-Smook JC.BMC Cell Biol. 2011 May 10;12:18.

6. Proteome dynamics during contractile and metabolic differentiation of bovine foetal muscle.

Chaze T, Meunier B, Chambon C, Jurie C, Picard B.Animal (2009) doi:10.1017/S1751731109004315

7. Identification of alpha-Enolase as an Autoantigen in Lung Cancer: Its Overexpression Is Associated with Clinical Outcomes.

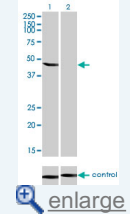
Chang GC, Liu KJ, Hsieh CL, Hu TS, Charoenfuprasert S, Liu HK, Luh KT, Hsu LH, Wu CW, Ting CC, Chen CY, Chen KC, Yang TY, Chou TY, Wang WH, Whang-Peng J, Shih NY.Clin Cancer Res. 2006 Oct 1;12(19):5746-54.



[enlarge](#)

ELISA

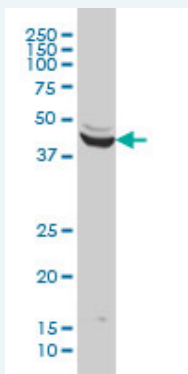
RNAi Knockdown (Antibody validated)



[enlarge](#)

Applications

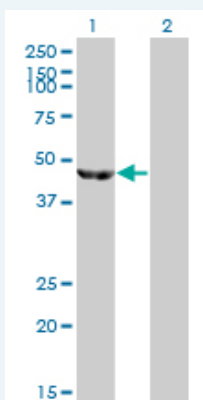
Western Blot (Cell lysate)



ENO3 monoclonal antibody (M01), clone 5D1 Western Blot analysis of ENO3 expression in HeLa (Cat # L013V1).

[Protocol Download](#)

Western Blot (Transfected lysate)



Western Blot analysis of ENO3 expression in transfected 293T cell line by ENO3 monoclonal antibody (M01), clone 5D1.

Lane 1: ENO3 transfected lysate(46.9 KDa).

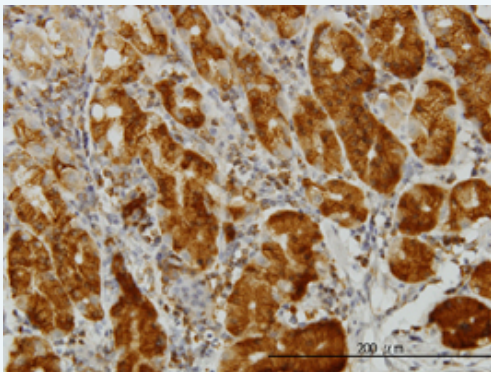
Lane 2: Non-transfected lysate.

[Protocol Download](#)

Western Blot (Recombinant protein)

[Protocol Download](#)

Immunohistochemistry (Formalin/PFA-fixed paraffin-embedded sections)

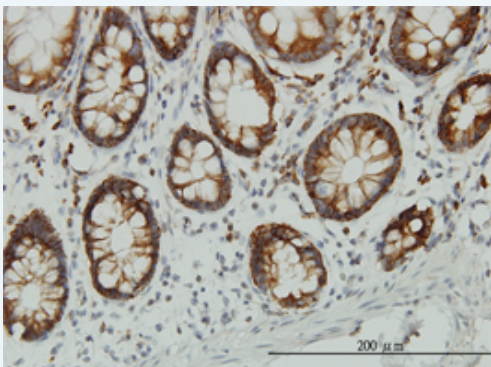


[enlarge this image](#)

Immunoperoxidase of monoclonal antibody to ENO3 on formalin-fixed paraffin-embedded human stomach. [antibody concentration 1.5 ug/ml]

[Protocol Download](#)

Immunohistochemistry (Formalin/PFA-fixed paraffin-embedded sections)

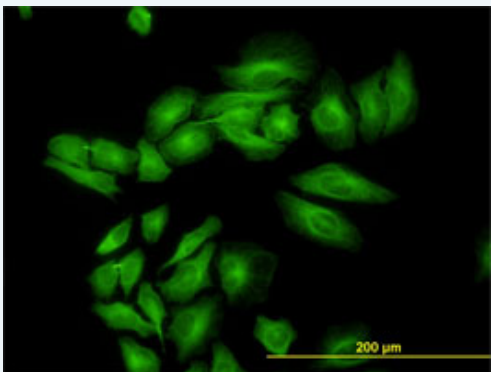


[enlarge this image](#)

Immunoperoxidase of monoclonal antibody to ENO3 on formalin-fixed paraffin-embedded human colon. [antibody concentration 3 ug/ml]

[Protocol Download](#)

Immunofluorescence

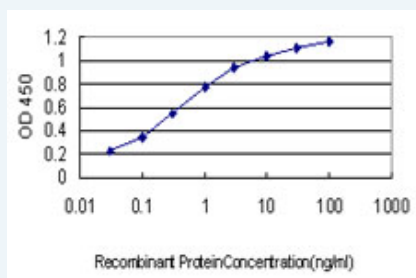


[enlarge this image](#)

Immunofluorescence of monoclonal antibody to ENO3 on HeLa cell. [antibody concentration 10 ug/ml]

[Protocol Download](#)

Sandwich ELISA (Recombinant protein)

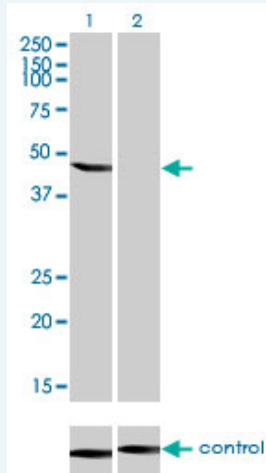


Detection limit for recombinant GST tagged ENO3 is approximately 0.03ng/ml as a capture antibody.

[Protocol Download](#)

ELISA

RNAi Knockdown (Antibody validated)



Western blot analysis of ENO3 over-expressed 293 cell line, cotransfected with ENO3 Validated Chimera RNAi (Cat # H00002027-R01V) (Lane 2) or non-transfected control (Lane 1). Blot probed with ENO3 monoclonal antibody (M01), clone 5D1 (Cat # H00002027-M01). GAPDH (36.1 kDa) used as specificity and loading control.

 [Protocol Download](#)

Gene Information

Entrez GeneID: [2027](#)

GeneBank [NM_001976](#)

Accession#:

Protein [NP_001967](#)

Accession#:

Gene Name: ENO3

Gene Alias: MSE

Gene Description: enolase 3 (beta, muscle)

Omim ID: [131370](#)

Gene Ontology: [Hyperlink](#)

Gene Summary: This gene encodes one of the three enolase isoenzymes found in mammals. This isoenzyme, a homodimer, is found in skeletal muscle cells in the adult. A switch from alpha enolase to beta enolase occurs in muscle tissue during development in rodents. Mutations in this gene can be associated with metabolic myopathies that may result from decreased stability of the enzyme. Two transcripts have been identified for this gene that differ only in their 5' UTR. [provided by RefSeq]

Other Designations: 2-phospho-D-glycerate hydrolyase, ENO3, muscle enolase 3 beta, OTTHUMP00000125242, beta enolase, enolase 3, enolase-3, beta, muscle, muscle specific enolase, skeletal muscle enolase

Gene Pathway

[Biosynthesis of alkaloids derived from histidine and purine](#)
[Biosynthesis of alkaloids derived from ornithine, lysine and nicotinic acid](#)
[Biosynthesis of alkaloids derived from shikimate pathway](#)
[Biosynthesis of alkaloids derived from terpenoid and polyketide](#)
[Biosynthesis of phenylpropanoids](#) [Biosynthesis of plant hormones](#)
[Biosynthesis of terpenoids and steroids](#) [Glycolysis / Gluconeogenesis](#) [Metabolic pathways](#)
[RNA degradation](#)

Related Disease

