



SZABO SCANDIC

Part of Europa Biosite

Produktinformation



Forschungsprodukte & Biochemikalien



Zellkultur & Verbrauchsmaterial



Diagnostik & molekulare Diagnostik



Laborgeräte & Service

Weitere Information auf den folgenden Seiten!
See the following pages for more information!



Lieferung & Zahlungsart

siehe unsere [Liefer- und Versandbedingungen](#)

Zuschläge

- Mindermengenzuschlag
- Trockeneiszuschlag
- Gefahrgutzuschlag
- Expressversand

SZABO-SCANDIC HandelsgmbH

Quellenstraße 110, A-1100 Wien

T. +43(0)1 489 3961-0

F. +43(0)1 489 3961-7

mail@szabo-scandic.com

www.szabo-scandic.com

[linkedin.com/company/szaboscandic](https://www.linkedin.com/company/szaboscandic) 

SLC29A1 purified MaxPab mouse polyclonal antibody (B01P) MaxPab®

Catalog # : H00002030-B01P

規格 : [50 ug]

[List All](#)

Specification

Product Description: Mouse polyclonal antibody raised against a full-length human SLC29A1 protein.

Immunogen: SLC29A1 (NP_004946.1, 1 a.a. ~ 456 a.a) full-length human protein.

Sequence:
 MTTSHQPQDRYKAVWLIFVMLGLGTLTPWNFFMTATQYFTNRLDMSQN
 VSLVTAELSKDAQASAAPAAPLPERNSLSAIFNNVMTLCAMLPLLLFTYLN
 SFLHQRIQSVRILGSLVAILLVFLITAILVKVQLDALPFFVITMIKIVLINSFG
 AILQGSFLGLAGLLPASYTAPIMSGQGLAGFFASVAMICAIASGSELSA
 FGYFITACAVIILTIIICYLGLPRLEFYRYQQQLKLEGPGEQETKLDLISKGEE
 PRAGKEESGVSVSNSQPTNESHNIKAILKNISVLAFVCFIFTITIGMFPAVT
 VEVKSSIAGSSTWERYFIPVSCFLTFNIFDWLGRSLTAVFMWPGKDSRW
 LPSLVLARLVFVPLLLLCNIKPRRYLTVVFEHDAWFIFMAAFASNGYLA
 SLCMCFGPKKVKPAEAEETAGAIMAFFLCLGLALGAVFSFLFRAIV

Host: Mouse

Reactivity: Human

Quality Control Testing: Antibody reactive against mammalian transfected lysate.

Storage Buffer: In 1x PBS, pH 7.4

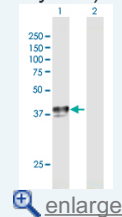
Storage Instruction: Store at -20°C or lower. Aliquot to avoid repeated freezing and thawing.

MSDS:  [Download](#)

Datasheet:  [Download](#)

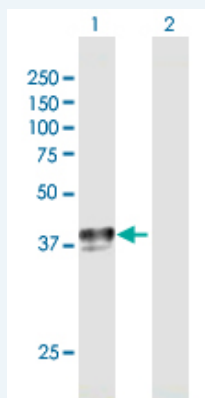
Application Image

Western Blot (Transfected lysate)



Applications

Western Blot (Transfected lysate)



Western Blot analysis of SLC29A1 expression in transfected 293T cell line (H00002030-T01) by SLC29A1 MaxPab polyclonal antibody.

Lane 1: SLC29A1 transfected lysate(50.16 KDa).

Lane 2: Non-transfected lysate.

Gene Information

Entrez GeneID: [2030](#)

GeneBank Accession#: [NM_004955.1](#)

Protein Accession#: [NP_004946.1](#)

Gene Name: SLC29A1

Gene Alias: ENT1,MGC1465,MGC3778

Gene Description: solute carrier family 29 (nucleoside transporters), member 1

Omim ID: [602193](#)

Gene Ontology: [Hyperlink](#)

Gene Summary: This gene is a member of the equilibrative nucleoside transporter family. The gene encodes a transmembrane glycoprotein that localizes to the plasma and mitochondrial membranes and mediates the cellular uptake of nucleosides from the surrounding medium. The protein is categorized as an equilibrative (as opposed to concentrative) transporter that is sensitive to inhibition by nitrobenzylthioinosine (NBMPR). Nucleoside transporters are required for nucleotide synthesis in cells that lack de novo nucleoside synthesis pathways, and are also necessary for the uptake of cytotoxic nucleosides used for cancer and viral chemotherapies. Multiple alternatively spliced variants, encoding the same protein, have been found for this gene. [provided by RefSeq]

Other Designations: OTTHUMP00000016506,OTTHUMP00000016507,OTTHUMP00000016508,OTTHUMP00000016509,OTTHUMP00000016510,OTTHUMP00000016511,OTTHUMP00000016512,equilibrative nitrobenzylmercaptapurine riboside (NBMPR)-sensitive nucleoside transporter,equilibrative nucleoside transpo

Related Disease

[Adenocarcinoma](#) [Carcinoma](#), [Pancreatic Ductal](#) [Cardiovascular Diseases](#)
[Depressive Disorder](#), [Major Diabetes Mellitus](#), [Type 2 Disease Models](#), [Animal Edema](#)
[Esophageal Neoplasms](#) [Fatigue](#) [Genetic Predisposition to Disease](#) [Hepatitis C](#)
[Hepatitis C](#), [Chronic HIV Infections](#) [Kidney Failure](#), [Chronic Neoplasms](#)
[Pancreatic Neoplasms](#) [Sleep Disorders](#) [Sleep Initiation and Maintenance Disorders](#)