



SZABO SCANDIC

Part of Europa Biosite

Produktinformation



Forschungsprodukte & Biochemikalien



Zellkultur & Verbrauchsmaterial



Diagnostik & molekulare Diagnostik



Laborgeräte & Service

Weitere Information auf den folgenden Seiten!
See the following pages for more information!



Lieferung & Zahlungsart

siehe unsere [Liefer- und Versandbedingungen](#)

Zuschläge

- Mindermengenzuschlag
- Trockeneiszuschlag
- Gefahrgutzuschlag
- Expressversand

SZABO-SCANDIC HandelsgmbH

Quellenstraße 110, A-1100 Wien

T. +43(0)1 489 3961-0

F. +43(0)1 489 3961-7

mail@szabo-scandic.com

www.szabo-scandic.com

[linkedin.com/company/szaboscandic](https://www.linkedin.com/company/szaboscandic) 

EP300 monoclonal antibody (M02), clone 1D2

Catalog # : H00002033-M02

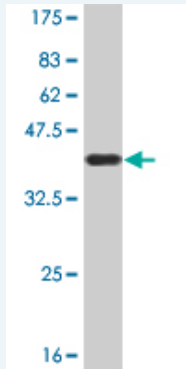
規格 : [50 ug]

[List All](#)

Specification

Product Description:	Mouse monoclonal antibody raised against a partial recombinant EP300.
Immunogen:	EP300 (NP_001420, 731 a.a. ~ 830 a.a) partial recombinant protein with GST tag. MW of the GST tag alone is 26 KDa.
Sequence:	PPLQHHGQLAQPGALNPPMGYGPRMQQPSNQGQFLPQTQFPSQGMN VTNIPLAPSSGQAPVSQAQMSSSSCPVNSPIMPPGSQSGSHIHCPQLPQPA LHQN
Host:	Mouse
Reactivity:	Human
Isotype:	IgG1

Quality Control Testing: Antibody Reactive Against Recombinant Protein.



Western Blot detection against Immunogen (36.74 KDa) .

Storage Buffer: In 1x PBS, pH 7.4

Storage Instruction: Store at -20°C or lower. Aliquot to avoid repeated freezing and thawing.

MSDS: [Download](#)

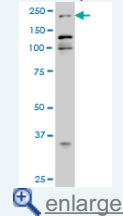
Datasheet: [Download](#)

Applications

Western Blot (Cell lysate)

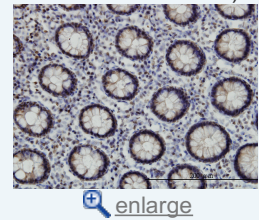
Application Image

Western Blot (Cell lysate)

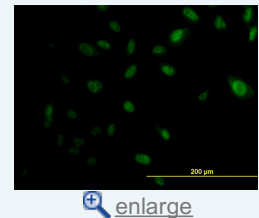


Western Blot (Recombinant protein)

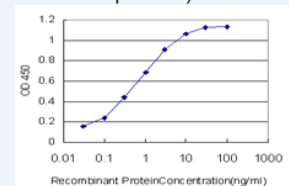
Immunohistochemistry (Formalin/PFA-fixed paraffin-embedded sections)



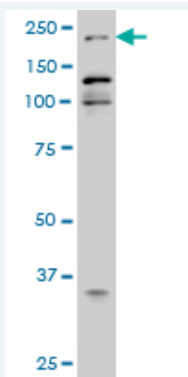
Immunofluorescence



Sandwich ELISA (Recombinant protein)



ELISA



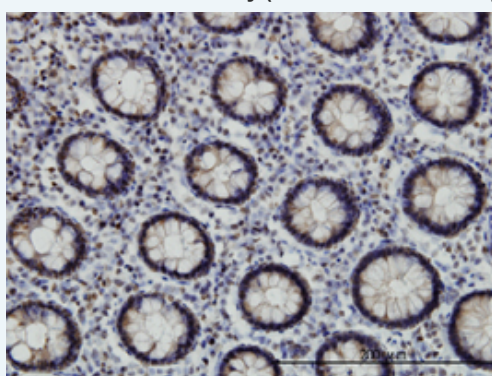
EP300 monoclonal antibody (M02), clone 1D2 Western Blot analysis of EP300 expression in HeLa S3 NE (Cat # L013V3).

[Protocol Download](#)

Western Blot (Recombinant protein)

[Protocol Download](#)

Immunohistochemistry (Formalin/PFA-fixed paraffin-embedded sections)

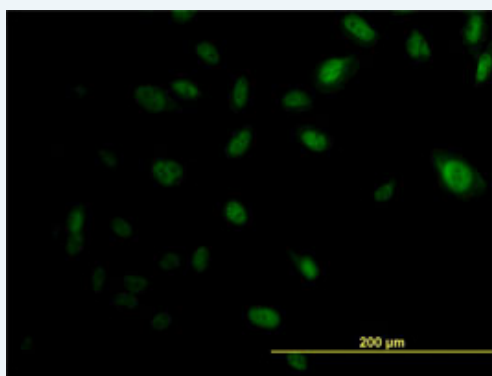


[enlarge this image](#)

Immunoperoxidase of monoclonal antibody to EP300 on formalin-fixed paraffin-embedded human colon. [antibody concentration 3 ug/ml]

[Protocol Download](#)

Immunofluorescence

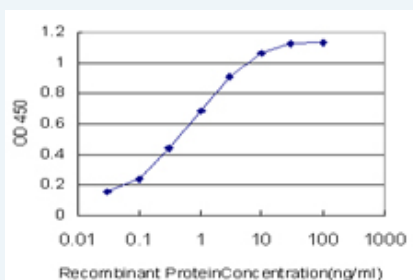


[enlarge this image](#)

Immunofluorescence of monoclonal antibody to EP300 on HeLa cell. [antibody concentration 10 ug/ml]

[Protocol Download](#)

Sandwich ELISA (Recombinant protein)



Detection limit for recombinant GST tagged EP300 is approximately 0.03ng/ml as a capture antibody.

ELISA

Gene Information

Entrez GeneID: [2033](#)

GeneBank Accession#: [NM_001429](#)

Protein Accession#: [NP_001420](#)

Gene Name: EP300

Gene Alias: KAT3B,p300

Gene Description: E1A binding protein p300

Omim ID: [114500](#), [180849](#), [602700](#)

Gene Ontology: [Hyperlink](#)

Gene Summary: This gene encodes the adenovirus E1A-associated cellular p300 transcriptional co-activator protein. It functions as histone acetyltransferase that regulates transcription via chromatin remodeling and is important in the processes of cell proliferation and differentiation. It mediates cAMP-gene regulation by binding specifically to phosphorylated CREB protein. This gene has also been identified as a co-activator of HIF1A (hypoxia-inducible factor 1 alpha), and thus plays a role in the stimulation of hypoxia-induced genes such as VEGF. Defects in this gene are a cause of Rubinstein-Taybi syndrome and may also play a role in epithelial cancer. [provided by RefSeq]

Other Designations: E1A-associated protein p300,E1A-binding protein, 300kD,OTTHUMP00000028668,histone acetyltransferase p300

Gene Pathway

[Adherens junction](#) [Cell cycle](#) [Huntington's disease](#) [Jak-STAT signaling pathway](#) [Long-term potentiation](#) [Melanogenesis](#) [Notch signaling pathway](#) [Pathways in cancer](#) [Prostate cancer](#) [Renal cell carcinoma](#) [TGF-beta signaling pathway](#) [Wnt signaling pathway](#)

Related Disease

[Breast cancer](#) [Breast Neoplasms](#) [Cardiovascular Diseases](#) [Diabetes Mellitus, Type 2](#) [Ductus Arteriosus, Patent](#) [Edema](#) [Genetic Predisposition to Disease](#) [Infant, Premature, Diseases](#) [Kidney Failure, Chronic](#) [Neoplasms, Glandular and Epithelial](#) [Ovarian cancer](#) [Ovarian Neoplasms](#) [Spinal Dysraphism](#) [Thyroid Neoplasms](#)