



# SZABO SCANDIC

Part of Europa Biosite

## Produktinformation



Forschungsprodukte & Biochemikalien



Zellkultur & Verbrauchsmaterial



Diagnostik & molekulare Diagnostik



Laborgeräte & Service

Weitere Information auf den folgenden Seiten!  
See the following pages for more information!



### Lieferung & Zahlungsart

siehe unsere [Liefer- und Versandbedingungen](#)

### Zuschläge

- Mindermengenzuschlag
- Trockeneiszuschlag
- Gefahrgutzuschlag
- Expressversand

### SZABO-SCANDIC HandelsgmbH

Quellenstraße 110, A-1100 Wien

T. +43(0)1 489 3961-0

F. +43(0)1 489 3961-7

[mail@szabo-scandic.com](mailto:mail@szabo-scandic.com)

[www.szabo-scandic.com](http://www.szabo-scandic.com)

[linkedin.com/company/szaboscandic](https://www.linkedin.com/company/szaboscandic) 

**EPAS1 purified MaxPab rabbit polyclonal antibody (D01P)** MaxPab®

Catalog # : H00002034-D01P

規格 : [ 100 ug ]

[List All](#)

**Specification**

**Product Description:** Rabbit polyclonal antibody raised against a full-length human EPAS1 protein.

**Immunogen:** EPAS1 (NP\_001421.2, 1 a.a. ~ 870 a.a) full-length human protein.

**Sequence:**  
 MTADKEKKRSSSERRKEKSRDAARCRRSKETEVFYELAHPLPHSVSS  
 HLDKASIMRLAISFLRTHKLLSSVCSENESEAEADQQMDNLYLKALEGFIA  
 VVTQDGMIFLSENISKFMGLTQVELTGHSIFDFTHPCDHEEIRENLSLKN  
 GSGFGKKSMDSTERDFFMRMKCTVTNRGRTVNLKSATWKVLHCTGQ  
 VKVYNNCPPHNSLGGYKEPLLSCLIIMCEPIQHPSHMDIPLDSKTFLSRHS  
 MDMKFTYDDRITELIGYHPEELLGRSAYEFYHALDSENMTKSHQNLCTK  
 GQVSGQYRMLAKHGGYVWLETQGTVIYNPRNLQPQCIMCVNYVLEIE  
 KNDVVF SMDQTESLFKPHLMAMNSIFDSSGKGAVSEKSNFLFTKLKEEP  
 EELAQLAPTGDIIISLDFGNQNFEESSAYGKAILPPSQPWATELRSHST  
 QSEAGSLPAFTVPQAAAPGSTTPSATSSSSSCSTPNSPEDYYTSLDNDL  
 KIEVIEKLFAMDTEAKDQCSTQDFNELDLETAPYIPMDGEDFQLSPICP  
 EERLLAENPQSTPQHCF SAMTNIFQPLAPVAPHSPFLDKFQQLESKK  
 TEPEHRPMSSIFFDAGSKASLPPCCGQASTPLSSMGGRSNTQWPPDPP  
 LHF GPTKWAVGDQRTEFLGAAPLGPPVSPPHVSTFKTRSAKGF GARGP  
 DVLSPAMVALSNKLLKLRQLEYEEQAFQDLSSGGDPPGGSTSHLMWKRM  
 KNLRGGSCPLMPDKPLSANVPNDKFTQNP MRGLGHPLRHLPLPQPPSAI  
 SPGENSKSRFPQCYATQYQDYSLSSAHKVS GMASRLLGPSFESYLLPE  
 LTRYDCEVNVPLGSSTLLQGGDLLRALDQAT

**Host:** Rabbit

**Reactivity:** Human

**Quality Control Testing:** Antibody reactive against mammalian transfected lysate.

**Storage Buffer:** In 1x PBS, pH 7.4

**Storage Instruction:** Store at -20°C or lower. Aliquot to avoid repeated freezing and thawing.

**MSDS:**  [Download](#)

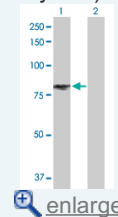
**Datasheet:**  [Download](#)

**Applications**

**Western Blot (Transfected lysate)**

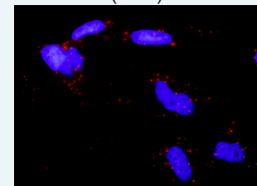
**Application Image**

Western Blot (Transfected lysate)

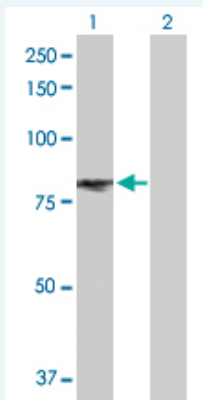


 [enlarge](#)

In situ Proximity Ligation Assay (Cell)



 [enlarge](#)

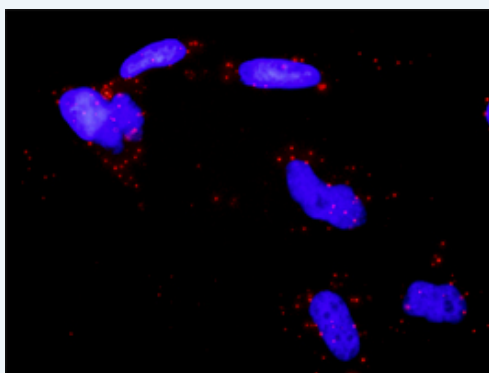


Western Blot analysis of EPAS1 expression in transfected 293T cell line ([H00002034-T02](#)) by EPAS1 MaxPab polyclonal antibody.

Lane 1: EPAS1 transfected lysate(96.50 KDa).  
Lane 2: Non-transfected lysate.

Protocol Download

### *In situ* Proximity Ligation Assay (Cell)



Proximity Ligation Analysis of protein-protein interactions between EPAS1 and SMAD3. HeLa cells were stained with anti-EPAS1 rabbit purified polyclonal 1:1200 and anti-SMAD3 mouse monoclonal antibody 1:50. Each red dot represents the detection of protein-protein interaction complex, and nuclei were counterstained with DAPI (blue).

### Gene Information

Entrez GeneID: [2034](#)

GeneBank [NM\\_001430.3](#)  
Accession#:

Protein [NP\\_001421.2](#)  
Accession#:

Gene Name: EPAS1

Gene Alias: ECYT4,HIF2A,HLF,MOP2,PASD2,bHLHe73

Gene Description: endothelial PAS domain protein 1

Omim ID: [603349](#)

Gene Ontology: [Hyperlink](#)

Other Designations: HIF-1alpha-like factor

### Gene Pathway

Pathways in cancer [Renal cell carcinoma](#)

## Related Disease

[Altitude Sickness](#) [Anoxia](#) [Cardiovascular Diseases](#) [Diabetes Mellitus, Type 2](#) [Edema](#)  
[Genetic Predisposition to Disease](#) [Hypertension, Pulmonary](#) [Polycythemia](#)  
[Retinopathy of Prematurity](#)

---

[服務條款](#) | [隱私權政策](#) | [著作及商標](#) | [網站地圖](#)

©2016 亞諾法生技股份有限公司 Abnova Corporation. 版權所有.