



SZABO SCANDIC

Part of Europa Biosite

Produktinformation



Forschungsprodukte & Biochemikalien



Zellkultur & Verbrauchsmaterial



Diagnostik & molekulare Diagnostik



Laborgeräte & Service

Weitere Information auf den folgenden Seiten!
See the following pages for more information!



Lieferung & Zahlungsart

siehe unsere [Liefer- und Versandbedingungen](#)

Zuschläge

- Mindermengenzuschlag
- Trockeneiszuschlag
- Gefahrgutzuschlag
- Expressversand

SZABO-SCANDIC HandelsgmbH

Quellenstraße 110, A-1100 Wien

T. +43(0)1 489 3961-0

F. +43(0)1 489 3961-7

mail@szabo-scandic.com

www.szabo-scandic.com

[linkedin.com/company/szaboscandic](https://www.linkedin.com/company/szaboscandic) 

EPAS1 monoclonal antibody (M08), clone 1G2

Catalog # : H00002034-M08

規格 : [100 ug]

[List All](#)

Specification

Product Description: Mouse monoclonal antibody raised against a partial recombinant EPAS1.

Immunogen: EPAS1 (NP_001421.2, 28 a.a. ~ 347 a.a) partial recombinant protein with GST tag. MW of the GST tag alone is 26 KDa.

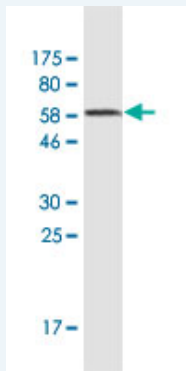
Sequence:
 SKETEYFYELAHPLPHSVSSHLDKASIMRLAISFLRTHKLLSSVCSENE
 SEAEADQQMDNLYLKALEGFIAVVTQDGMIFLSENISKFMGLTQVELTG
 HSIFDFTHPCDHEEIRENLSLKNKSGFGKKSMDSTERDFMRMKCTVT
 NRGRTVNLKSATWKVLHCTGQVKVYNNCPHNSLCGYKEPLLSCLIIMCE
 PIQHPHMDIPLDSKTFLSRHSMDMKFTYCDRITELIGYHPEELLGRSAY
 EFYHALDSENMTKSHQNLCTKGQVVSQYRMLAKHGGYVWLETQGTVI
 YNPRNLQPQCIMCVNYLSEI

Host: Mouse

Reactivity: Human

Isotype: IgG1 Kappa

Quality Control Testing: Antibody Reactive Against Recombinant Protein.



Western Blot detection against Immunogen (60.83 KDa) .

Storage Buffer: In 1x PBS, pH 7.4

Storage Instruction: Store at -20°C or lower. Aliquot to avoid repeated freezing and thawing.

MSDS: [Download](#)

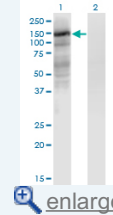
Datasheet: [Download](#)

Applications

Western Blot (Transfected lysate)

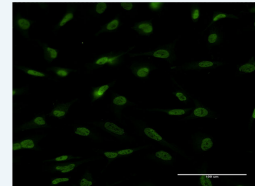
Application Image

Western Blot (Transfected lysate)

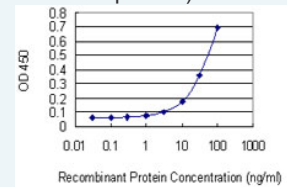


Western Blot (Recombinant protein)

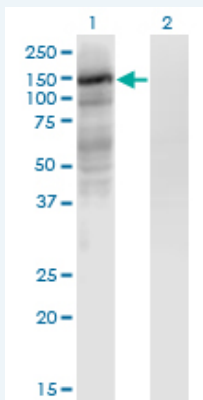
Immunofluorescence



Sandwich ELISA (Recombinant protein)



ELISA



Western Blot analysis of EPAS1 expression in transfected 293T cell line by EPAS1 monoclonal antibody (M08), clone 1G2.

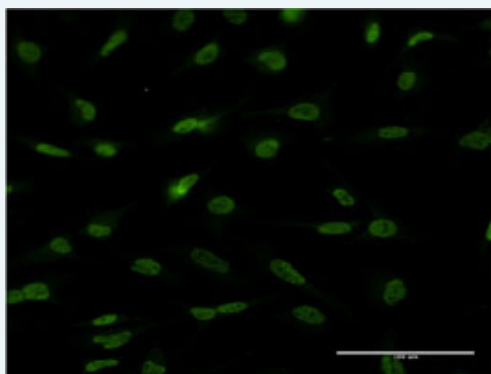
Lane 1: EPAS1 transfected lysate (Predicted MW: 96.5 KDa).
Lane 2: Non-transfected lysate.

[Protocol Download](#)

Western Blot (Recombinant protein)

[Protocol Download](#)

Immunofluorescence

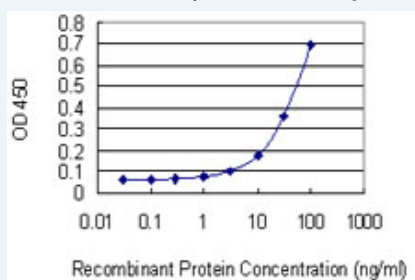


[enlarge this image](#)

Immunofluorescence of monoclonal antibody to EPAS1 on HeLa cell . [antibody concentration 10 ug/ml]

[Protocol Download](#)

Sandwich ELISA (Recombinant protein)



Detection limit for recombinant GST tagged EPAS1 is 1 ng/ml as a capture antibody.

[Protocol Download](#)

ELISA

Gene Information

Entrez GeneID: [2034](#)

GeneBank [NM_001430.3](#)

Accession#:

Protein [NP_001421.2](#)

Accession#:

Gene Name: EPAS1

Gene Alias: ECYT4,HIF2A,HLF,MOP2,PASD2,bHLHe73

Gene Description: endothelial PAS domain protein 1

Omim ID: [603349](#)

Gene Ontology: [Hyperlink](#)

Other Designations: HIF-1alpha-like factor

Gene Pathway

[Pathways in cancer](#) [Renal cell carcinoma](#)

Related Disease

[Altitude Sickness](#) [Anoxia](#) [Cardiovascular Diseases](#) [Diabetes Mellitus, Type 2](#) [Edema](#)
[Genetic Predisposition to Disease](#) [Hypertension, Pulmonary](#) [Polycythemia](#)
[Retinopathy of Prematurity](#)

[服務條款](#) | [隱私權政策](#) | [著作及商標](#) | [網站地圖](#)

©2016 亞諾法生技股份有限公司 Abnova Corporation. 版權所有.