



SZABO SCANDIC

Part of Europa Biosite

Produktinformation



Forschungsprodukte & Biochemikalien



Zellkultur & Verbrauchsmaterial



Diagnostik & molekulare Diagnostik



Laborgeräte & Service

Weitere Information auf den folgenden Seiten!
See the following pages for more information!



Lieferung & Zahlungsart

siehe unsere [Liefer- und Versandbedingungen](#)

Zuschläge

- Mindermengenzuschlag
- Trockeneiszuschlag
- Gefahrgutzuschlag
- Expressversand

SZABO-SCANDIC HandelsgmbH

Quellenstraße 110, A-1100 Wien

T. +43(0)1 489 3961-0

F. +43(0)1 489 3961-7

mail@szabo-scandic.com

www.szabo-scandic.com

[linkedin.com/company/szaboscandic](https://www.linkedin.com/company/szaboscandic) 

EPB41L1 MaxPab mouse polyclonal antibody (B01) MaxPab®

Catalog # : H00002036-B01

規格 : [50 uL]

[List All](#)

Specification

Product Description: Mouse polyclonal antibody raised against a full-length human EPB41L1 protein.

Immunogen: EPB41L1 (NP_818932.1, 1 a.a. ~ 779 a.a) full-length human protein.

Sequence:
MEEKDYSEADGLSERTTPSKAQKSPQKIAKKYKSAICRVTLDDASEYECE
VEKHGRGQVLFDLVCEHLNLEKDYFGLTFCDADSQKNWLDPSKEIKKQ
IRSSPWNFAFTVKFYPPDPAQLTEDITRYLCLQLRADIITGRLPCSFVTH
ALLGSYAVQAEELGDYDAEEHVGNYVSELRFAPNQTRLEERIMELHKTY
RGMTPGEAEIHFLNNAKLSMYGVDLHHAKDSEGIDIMLGVCANGLLYRD
RLRINRFAWPKILKISYKRSNFYIKIRPGEYEQFESTIGFKLPNHRSAKRLW
KVCIEHHTFFRLVSPPEPPKGFVLMGSKFRYSGRTQAQTRQASALIDRP
APFFERSSSKRYTMSRSLDGAEF SRPASVSENHDAGPDGDKRDEDGES
GGQRSEAEEGEVRTPTKIKELKFLDKPEDVLLKHQASINELKRTLKEPNS
KLIHRDRDWERERRLPSSPASPSPKGTPEKANERAGLREGSEEKVKPPR
PRAPESDTGDEDQDQERDVF LKDNHLAIERKCSSITVSSSTSSLEAEVDF
TVIGDYHGSAFEDFSRSLPELDRDKSDSDEGLLF SRDLNKGAPSQDDE
SGGIEDSPDRGACSTPDMPQFEPVKTETMTVSSLAIRKKIEPEAVLQTRV
SAMDNTQENSLKSGKGAAMIPGPQT VATEIRSLSPIIGKDVLTSTYGATA
ETLSTSTTHVTKTVKGGFSETRIEKRIITGDEDVDQDQALALAIKEAKLQ
HPDMLVTKAVVYRETDPSPPEERDKKPQES

Host: Mouse

Reactivity: Human

Quality Control Testing: Antibody reactive against mammalian transfected lysate.

Storage Buffer: No additive

Storage Instruction: Store at -20°C or lower. Aliquot to avoid repeated freezing and thawing.

Note: For IHC and IF applications, antibody purification with Protein A will be needed prior to use.

MSDS: [Download](#)

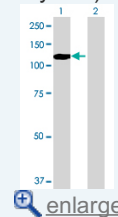
Datasheet: [Download](#)

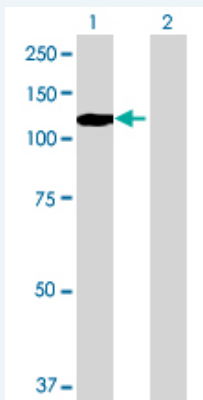
Applications

Western Blot (Transfected lysate)

Application Image


Western Blot (Transfected lysate)





Western Blot analysis of EPB41L1 expression in transfected 293T cell line (H00002036-T01) by EPB41L1 MaxPab polyclonal antibody.

Lane1:EPB41L1 transfected lysate(85.69 KDa).
Lane2:Non-transfected lysate.

 [Protocol Download](#)

Gene Information

Entrez GeneID: [2036](#)

GeneBank Accession#: [NM_177996.1](#)

Protein Accession#: [NP_818932.1](#)

Gene Name: EPB41L1

Gene Alias: 4.1N,DKFZp686H17242,KIAA0338,MGC11072

Gene Description: erythrocyte membrane protein band 4.1-like 1

Omim ID: [602879](#)

Gene Ontology: [Hyperlink](#)

Gene Summary: Erythrocyte membrane protein band 4.1 (EPB41) is a multifunctional protein that mediates interactions between the erythrocyte cytoskeleton and the overlying plasma membrane. The protein encoded by this gene is a neuronally-enriched protein that is structurally similar to EPB41. The encoded protein binds and stabilizes D2 and D3 dopamine receptors at the neuronal plasma membrane. Multiple transcript variants encoding different isoforms have been found for this gene, but the full-length nature of only two of them has been determined. [provided by RefSeq]

Other Designations: OTTHUMP00000030825,OTTHUMP00000030829,neuron-type nonerythroid protein 4.1,neuronal protein 4.1

Gene Pathway

[Tight junction](#)

Related Disease

[Anorexia Nervosa](#) [Bulimia](#) [Genetic Predisposition to Disease](#)

