



SZABO SCANDIC

Part of Europa Biosite

Produktinformation



Forschungsprodukte & Biochemikalien



Zellkultur & Verbrauchsmaterial



Diagnostik & molekulare Diagnostik



Laborgeräte & Service

Weitere Information auf den folgenden Seiten!
See the following pages for more information!



Lieferung & Zahlungsart

siehe unsere [Liefer- und Versandbedingungen](#)

Zuschläge

- Mindermengenzuschlag
- Trockeneiszuschlag
- Gefahrgutzuschlag
- Expressversand

SZABO-SCANDIC HandelsgmbH

Quellenstraße 110, A-1100 Wien

T. +43(0)1 489 3961-0

F. +43(0)1 489 3961-7

mail@szabo-scandic.com

www.szabo-scandic.com

[linkedin.com/company/szaboscandic](https://www.linkedin.com/company/szaboscandic) 

EPB41L2 purified MaxPab mouse polyclonal antibody (B01P) MaxPab®

Catalog # : H00002037-B01P

規格 : [50 ug]

[List All](#)

Specification

Product Description: Mouse polyclonal antibody raised against a full-length human EPB41L2 protein.

Immunogen: EPB41L2 (AAH34718.1, 1 a.a. ~ 633 a.a) full-length human protein.

Sequence:
 MTTEVGSVSEVKKDSSQLGTDATKEKPKEVAENQQNQSSDPREEKGSQ
 PPPAAESQSSLRQKREKETSESRGISRFIPPWLKKQKSYTLVAKDGG
 DKKEPTQAVVEEQVLDKEEPLPEEQRQAKGDAEEMAQKKQEIKVEVKEE
 KPSVSKEEKPSVSKVEMQPTLVSKEREKVKETQEDKLEGGAAKRETK
 EVQTNELKAEKASQKVTKKTKTVQCKVTLDDGTEYSCDLEKHAKGQVLF
 DKVCEHLNLEKDYFGLLFQESPEQKNWLDPAKEIKRQLRNLPLWFTFN
 VKFYPPDPSQLTEDITRYFLCLQLRQDIASGR LPCSFVTHALLGSYTLQA
 ELGDYDPEEHGSIDLSEFQFAPTQTKELEEKVAELHKT HRGLSPAQADS
 QFLENARLSMYGVDLHHAKDSEGVDIKLGVCANGLLYKDRLRINRF AW
 PKILKISYKRSNFYKVRPAELEQFESTIGFKLPNHRAAKRLWKVCVEHHTF
 YRLVSPEQP PKAKFLT LGSKFRYSGRTQAQTRQASTLIDRPAPHFERTS
 SKRVSRLDGAFIGVMDQSLMKDFPGAAGEISAYG PGLVSI VVQDGDG
 RREVRSP TKAPHLQLIEGKSSHETLNIVEEKSGQRLGKTKE

Host: Mouse

Reactivity: Human, Mouse

Quality Control Testing: Antibody reactive against mammalian transfected lysate.

Storage Buffer: In 1x PBS, pH 7.4

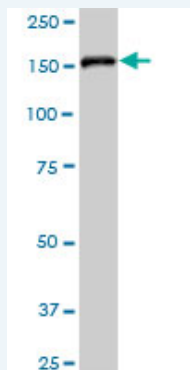
Storage Instruction: Store at -20°C or lower. Aliquot to avoid repeated freezing and thawing.

MSDS: [Download](#)

Datasheet: [Download](#)

Applications

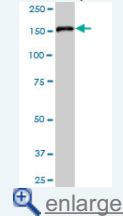
Western Blot (Cell lysate)



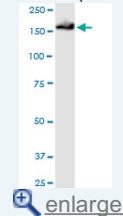
EPB41L2 MaxPab polyclonal antibody. Western Blot analysis of EPB41L2 expression in HepG2.

Application Image

Western Blot (Cell lysate)



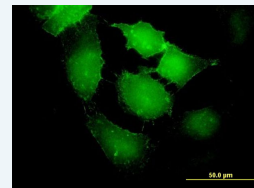
Western Blot (Cell lysate)



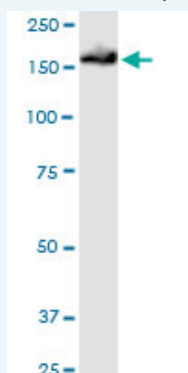
Western Blot (Transfected lysate)



Immunofluorescence

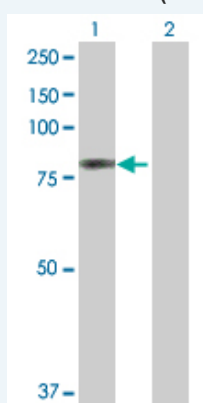


Western Blot (Cell lysate)



EPB41L2 MaxPab polyclonal antibody. Western Blot analysis of EPB41L2 expression in NIH/3T3.

Western Blot (Transfected lysate)

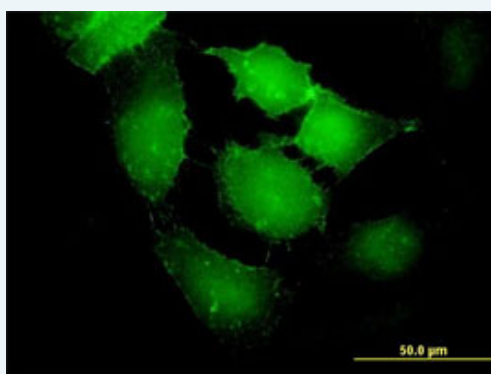


Western Blot analysis of EPB41L2 expression in transfected 293T cell line (H00002037-T01) by EPB41L2 MaxPab polyclonal antibody.

Lane 1: EPB41L2 transfected lysate(69.63 KDa).

Lane 2: Non-transfected lysate.

Immunofluorescence



 enlarge this image

Immunofluorescence of purified MaxPab antibody to EPB41L2 on HeLa cell. [antibody concentration 10 ug/ml]

Gene Information

Entrez GeneID: 2037

GeneBank BC034718.1

Accession#:

Protein AAH34718.1

Accession#:

Gene Name: EPB41L2

Gene Alias: 4.1-G,DKFZp781D1972,DKFZp781H1755

Gene Description: erythrocyte membrane protein band 4.1-like 2

Omim ID: [603237](#)

Gene Ontology: [Hyperlink](#)

Other Designations: OTTHUMP00000017197,OTTHUMP00000040262,erythrocyte membrane protein band 4.1 like-protein 2

Gene Pathway

[Tight junction](#)

Related Disease

[Tobacco Use Disorder](#)

[服務條款](#) | [隱私權政策](#) | [著作及商標](#) | [網站地圖](#)

©2016 亞諾法生技股份有限公司 Abnova Corporation. 版權所有.