



# SZABO SCANDIC

Part of Europa Biosite

## Produktinformation



Forschungsprodukte & Biochemikalien



Zellkultur & Verbrauchsmaterial



Diagnostik & molekulare Diagnostik



Laborgeräte & Service

Weitere Information auf den folgenden Seiten!  
See the following pages for more information!



### Lieferung & Zahlungsart

siehe unsere [Liefer- und Versandbedingungen](#)

### Zuschläge

- Mindermengenzuschlag
- Trockeneiszuschlag
- Gefahrgutzuschlag
- Expressversand

### SZABO-SCANDIC HandelsgmbH

Quellenstraße 110, A-1100 Wien

T. +43(0)1 489 3961-0

F. +43(0)1 489 3961-7

[mail@szabo-scandic.com](mailto:mail@szabo-scandic.com)

[www.szabo-scandic.com](http://www.szabo-scandic.com)

[linkedin.com/company/szaboscandic](https://www.linkedin.com/company/szaboscandic) 

**EPB41L2 purified MaxPab rabbit polyclonal antibody (D01P) MaxPab®**

Catalog # : H00002037-D01P

規格 : [ 100 ug ]

[List All](#)

**Specification**

**Product Description:** Rabbit polyclonal antibody raised against a full-length human EPB41L2 protein.

**Immunogen:** EPB41L2 (AAH34718.1, 1 a.a. ~ 633 a.a) full-length human protein.

**Sequence:**  
 MTTEVGSVSEVKKDSSQLGTDATKEKPKEVAENQQNQSSDPREEKGSQ  
 PPPAAESQSSLRRQKREKETSESRGISRFIPPWLKKQKSYTLVAKDGG  
 DKKEPTQAVVEEQVLDKEEPLPEEQRQAKGDAEEMAQKKQEIKVEVKEE  
 KPSVSKEEKPSVSKVEMQPTLVSKEREEKVKETQEDKLEGGAAKRETK  
 EVQTNELKAEKASQKVTKKTKTVQCKVTLDDGTEYSCDLEKHAKGQVLF  
 DKVCEHLNLEKDYFGLLFQESPEQKNWLDPAKEIKRQLRNLPLWFTFN  
 VKFYPPDPSQLTEDITRYFLCLQLRQDIASGRLPCSFVTHALLGSYTLQA  
 ELGDYDPEEHGSIDLSEFQFAPTQTKELEEKVAELHKT HRGLSPAQADS  
 QFLENARLSMYGVDLHHAKDSEGVDIKLGVCANGLLYKDRLRINRF AW  
 PKILKISYKRSNFYKVRPAELEQFESTIGFKLPNHRAAKRLWKVCVEHHTF  
 YRLVSPEQP KAKFLT LGSKFRYSGRTQAQTRQASTLIDRPAPHFERTS  
 SKRVSRLDGAPIGVMDQSLMKDFPGAAGEISAYG PGLVSIADVQDGDG  
 RREVRSP TKAPHLQLIEGKSSHETLNIVEEKSGQRLGKTKE

**Host:** Rabbit

**Reactivity:** Human

**Quality Control Testing:** Antibody reactive against mammalian transfected lysate.

**Storage Buffer:** In 1x PBS, pH 7.4

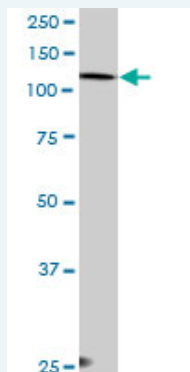
**Storage Instruction:** Store at -20°C or lower. Aliquot to avoid repeated freezing and thawing.

**MSDS:**  [Download](#)

**Datasheet:**  [Download](#)

**Applications**

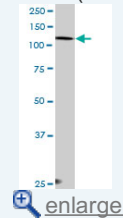
**Western Blot (Cell lysate)**



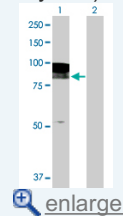
EPB41L2 MaxPab rabbit polyclonal antibody. Western Blot analysis of EPB41L2 expression in A-431.

**Application Image**

**Western Blot (Cell lysate)**



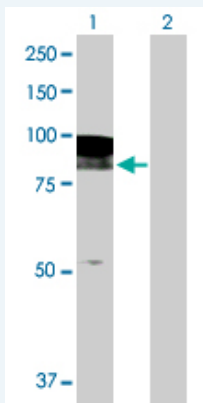
**Western Blot (Transfected lysate)**



**Immunofluorescence**



### Western Blot (Transfected lysate)

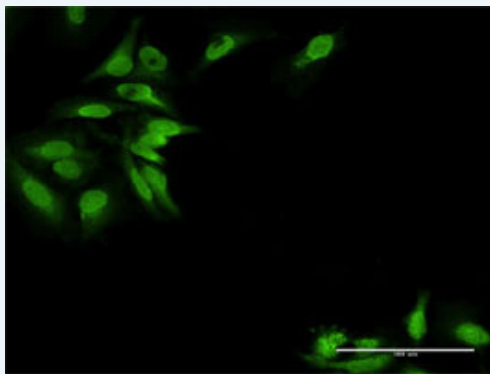



Western Blot analysis of EPB41L2 expression in transfected 293T cell line ([H00002037-T02](#)) by EPB41L2 MaxPab polyclonal antibody.

Lane 1: EPB41L2 transfected lysate(71.60 KDa).

Lane 2: Non-transfected lysate.

### Immunofluorescence



 enlarge this image

Immunofluorescence of purified MaxPab antibody to EPB41L2 on HeLa cell. [antibody concentration 30 ug/ml]

### Gene Information

Entrez GeneID: [2037](#)

GeneBank [BC034718.1](#)  
Accession#:

Protein [AAH34718.1](#)  
Accession#:

Gene Name: EPB41L2

Gene Alias: 4.1-G,DKFZp781D1972,DKFZp781H1755

Gene Description: erythrocyte membrane protein band 4.1-like 2

Omim ID: [603237](#)

Gene Ontology: [Hyperlink](#)

Other Designations: OTTHUMP00000017197,OTTHUMP00000040262,erythrocyte membrane protein band 4.1 like-protein 2

### Gene Pathway

---

[Tight junction](#)

### Related Disease

---

[Tobacco Use Disorder](#)

---

[服務條款](#) | [隱私權政策](#) | [著作及商標](#) | [網站地圖](#)

©2016 亞諾法生技股份有限公司 Abnova Corporation. 版權所有.