



# SZABO SCANDIC

Part of Europa Biosite

## Produktinformation



Forschungsprodukte & Biochemikalien



Zellkultur & Verbrauchsmaterial



Diagnostik & molekulare Diagnostik



Laborgeräte & Service

Weitere Information auf den folgenden Seiten!  
See the following pages for more information!



### Lieferung & Zahlungsart

siehe unsere [Liefer- und Versandbedingungen](#)

### Zuschläge

- Mindermengenzuschlag
- Trockeneiszuschlag
- Gefahrgutzuschlag
- Expressversand

### SZABO-SCANDIC HandelsgmbH

Quellenstraße 110, A-1100 Wien

T. +43(0)1 489 3961-0

F. +43(0)1 489 3961-7

[mail@szabo-scandic.com](mailto:mail@szabo-scandic.com)

[www.szabo-scandic.com](http://www.szabo-scandic.com)

[linkedin.com/company/szaboscandic](https://www.linkedin.com/company/szaboscandic) 

## STOM purified MaxPab mouse polyclonal antibody (B01P) MaxPab®

Catalog # : H00002040-B01P

規格 : [ 50 ug ]

[List All](#)

### Specification

**Product Description:** Mouse polyclonal antibody raised against a full-length human STOM protein.

**Immunogen:** STOM (NP\_004090.4, 1 a.a. ~ 288 a.a) full-length human protein.

**Sequence:**  
 MAEKRHTRDSEAQRLPDSFKDSPSKGLGPCGWILVAFSFLFTVITFPISI  
 WMCIKIKEYERAIIIFRLGRILQGGAKGPGFLFILPCTDSFIKVD MRTISFDIP  
 PQEILTKDSVTISVDGVVYYRVQ NATLAVANITNADSATRLLAQTTLRNVL  
 GTKNLSQILSDREEIAHNMQSTLDDATDAWGIKVERVEIKDVKLPVQLQR  
 AMAAAEAEASREARAKVIAAEGEMNASRALKEASMVITESPAALQLRYLQT  
 LTTIAAEKNSTIVFPLPIDMLQGIGAKHSHLG

**Host:** Mouse

**Reactivity:** Human

**Quality Control Testing:** Antibody reactive against mammalian transfected lysate.

**Storage Buffer:** In 1x PBS, pH 7.4

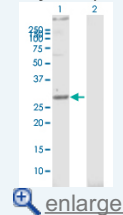
**Storage Instruction:** Store at -20°C or lower. Aliquot to avoid repeated freezing and thawing.

**MSDS:** [Download](#)

**Datasheet:** [Download](#)

### Application Image

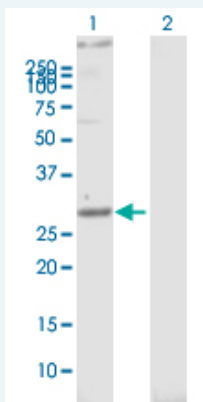
Western Blot (Transfected lysate)



[enlarge](#)

### Applications

Western Blot (Transfected lysate)



Western Blot analysis of STOM expression in transfected 293T cell line ([H00002040-T01](#)) by STOM MaxPab polyclonal antibody.

Lane 1: STOM transfected lysate(31.68 KDa).

Lane 2: Non-transfected lysate.

[Protocol Download](#)

### Gene Information

**Entrez GeneID:** [2040](#)

**GeneBank  
Accession#:** [NM\\_004099.4](#)

**Protein  
Accession#:** [NP\\_004090.4](#)

**Gene Name:** STOM

**Gene Alias:** BND7,EPB7,EPB72

**Gene  
Description:** stomatin

**Omim ID:** [133090](#)

**Gene Ontology:** [Hyperlink](#)

**Other  
Designations:** OTTHUMP00000022024,OTTHUMP00000022025,OTTHUMP00000064035,erythrocyte membrane protein band 7.2 (stomatin)

#### **Related Disease**

[Cleft Lip](#) [Cleft Palate](#)

[服務條款](#) | [隱私權政策](#) | [著作及商標](#) | [網站地圖](#)

©2016 亞諾法生技股份有限公司 Abnova Corporation. 版權所有.