



# SZABO SCANDIC

Part of Europa Biosite

## Produktinformation



Forschungsprodukte & Biochemikalien



Zellkultur & Verbrauchsmaterial



Diagnostik & molekulare Diagnostik



Laborgeräte & Service

Weitere Information auf den folgenden Seiten!  
See the following pages for more information!



### Lieferung & Zahlungsart

siehe unsere [Liefer- und Versandbedingungen](#)

### Zuschläge

- Mindermengenzuschlag
- Trockeneiszuschlag
- Gefahrgutzuschlag
- Expressversand

### SZABO-SCANDIC HandelsgmbH

Quellenstraße 110, A-1100 Wien

T. +43(0)1 489 3961-0

F. +43(0)1 489 3961-7

[mail@szabo-scandic.com](mailto:mail@szabo-scandic.com)

[www.szabo-scandic.com](http://www.szabo-scandic.com)

[linkedin.com/company/szaboscandic](https://www.linkedin.com/company/szaboscandic) 

## EXT2 MaxPab mouse polyclonal antibody (B01) MaxPab®

Catalog # : H00002132-B01

規格 : [ 50 uL ]

[List All](#)

### Specification

**Product Description:** Mouse polyclonal antibody raised against a full-length human EXT2 protein.

**Immunogen:** EXT2 (NP\_000392, 1 a.a. ~ 718 a.a) full-length human protein.

**Sequence:**  
 MCASVKYNIRGPALIPRMKTKHRIYYITLFSIVLLGLIATGMFQFWPHSIESS  
 NDWNVEKRSIRDVPVWRLPADSPIPERGDLSCRMHTCFDVYRCGFNPKN  
 KIKVYIYALKKYVDDFGVSVSNTISREYNELLMASDSDYYTDDINRACLFV  
 PSIDVLNQNTLRKETAQAMAQLSRWDRGTNHLLFNMLPGGPPDYNTAL  
 DVPRDRALLAGGGFSTWYRQGYDVSIPVYSPLSAEVDLPEKGGPGRQ  
 YFLLSSQVGLHPEYREDLEALQVKHGESVLVLDKCTNLSEGLSVRKRC  
 HKHQVFDYPQVLQEATFCWVLRGARLGQAVLSDVLQAGCVPVVIADSYI  
 LPFSEVLDWKRASVVPEEKMSDVYSILQSIPQRQIEEMQRQARWFWEA  
 YFQSIKAIALATLQIINDRIYPYAAISYEEWNDPPAVKWGSVSNPLFLPLIPP  
 QSQGFAMLTYDRVESLFRVITEVSKVPSLSKLLVWNNQKNKPPEDSL  
 WPKIRVPLKVVRTAENKLSNRFFPYDEIETEAVLAIDDDIIMLTSDQLQFGY  
 EWWREFPDRLVGYGRLHLWDHEMNKWKYESEWTNEVSMVLTGAIFY  
 HKYFNLYTYKMPGDIKNWVDAHMCEDIAMNFLVANVTGKAVIKVTPRK  
 KFKCPECTAIDGLSLDQTHMVERSECKFASVFGTMPLKVVVEHRADPVL  
 YKDDFPEKLSFPNIGSL

**Host:** Mouse

**Reactivity:** Human

**Quality Control Testing:** Antibody reactive against mammalian transfected lysate.

**Storage Buffer:** No additive

**Storage Instruction:** Store at -20°C or lower. Aliquot to avoid repeated freezing and thawing.

**Note:** For IHC and IF applications, antibody purification with Protein A will be needed prior to use.

**MSDS:**  [Download](#)

**Datasheet:**  [Download](#)

### Publication Reference

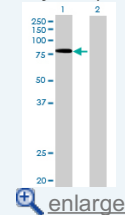
1. [Old gene, new phenotype: mutations in heparan sulfate synthesis enzyme, EXT2 leads to seizure and developmental disorder, no exostoses.](#)  
 Farhan SM, Wang J, Robinson JF, Prasad AN, Rupar CA, Siu VM; FORGE Canada Consortium, Hegele RA. *J Med Genet.* 2015 Aug 5. [Epub ahead of print]

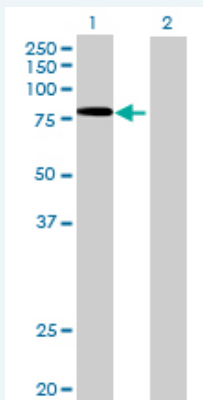
### Applications

**Western Blot (Transfected lysate)**

### Application Image


Western Blot (Transfected lysate)





Western Blot analysis of EXT2 expression in transfected 293T cell line ([H00002132-T01](#)) by EXT2 MaxPab polyclonal antibody.

Lane 1: EXT2 transfected lysate(78.98 KDa).  
Lane 2: Non-transfected lysate.

 [Protocol Download](#)

### Gene Information

**Entrez GeneID:** [2132](#)

**GeneBank Accession#:** [NM\\_000401](#)

**Protein Accession#:** [NP\\_000392](#)

**Gene Name:** EXT2

**Gene Alias:** SOTV

**Gene Description:** exostoses (multiple) 2

**Omim ID:** [133701](#), [608210](#)

**Gene Ontology:** [Hyperlink](#)

**Gene Summary:** This gene encodes one of two glycosyltransferases involved in the chain elongation step of heparan sulfate biosynthesis. Mutations in this gene cause the type II form of multiple exostoses. Alternatively spliced transcript variants encoding different isoforms have been noted for this gene. [provided by RefSeq]

**Other Designations:** Glucuronosyl-N-acetylglucosaminyl-proteoglycan 4-alpha-N-acetylglucosaminyltransferase,N-acetylglucosaminyl-proteoglycan 4-beta-glucuronosyltransferase,exostosin 2

### Gene Pathway

[Heparan sulfate biosynthesis](#) [Metabolic pathways](#)

### Related Disease

[Cardiovascular Diseases](#) [Coronary Disease](#) [Diabetes Mellitus](#) [Diabetes Mellitus, Type 2](#) [Edema](#) [Exostoses, Multiple Hereditary](#) [Genetic Predisposition to Disease](#) [Glucose Intolerance](#) [HIV Infections](#) [Hyperglycemia](#) [Obesity](#) [Tobacco Use Disorder](#)