



# SZABO SCANDIC

Part of Europa Biosite

## Produktinformation



Forschungsprodukte & Biochemikalien



Zellkultur & Verbrauchsmaterial



Diagnostik & molekulare Diagnostik



Laborgeräte & Service

Weitere Information auf den folgenden Seiten!  
See the following pages for more information!



### Lieferung & Zahlungsart

siehe unsere [Liefer- und Versandbedingungen](#)

### Zuschläge

- Mindermengenzuschlag
- Trockeneiszuschlag
- Gefahrgutzuschlag
- Expressversand

### SZABO-SCANDIC HandelsgmbH

Quellenstraße 110, A-1100 Wien

T. +43(0)1 489 3961-0

F. +43(0)1 489 3961-7

[mail@szabo-scandic.com](mailto:mail@szabo-scandic.com)

[www.szabo-scandic.com](http://www.szabo-scandic.com)

[linkedin.com/company/szaboscandic](https://www.linkedin.com/company/szaboscandic) 

## EXT2 monoclonal antibody (M01), clone 3G6

Catalog # : H00002132-M01

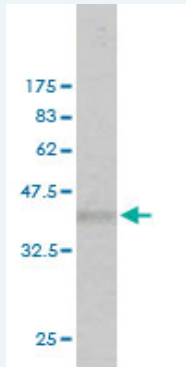
規格 : [ 100 ug ]

[List All](#)

### Specification

<b>Product Description:</b>	Mouse monoclonal antibody raised against a partial recombinant EXT2.
<b>Immunogen:</b>	EXT2 (AAH10058, 216 a.a. ~ 315 a.a) partial recombinant protein with GST tag. MW of the GST tag alone is 26 KDa.
<b>Sequence:</b>	GFSTWTYRQGYDVSIPVYSPLSAEVDLPEKGPGRQYFLLSSQVGLHP EYREDLEALQVKHGESVLVLDKCTNLSEGLSVRKRCHKHQVFDYPQVL QEA
<b>Host:</b>	Mouse
<b>Reactivity:</b>	Human
<b>Isotype:</b>	IgG1 kappa

**Quality Control Testing:** Antibody Reactive Against Recombinant Protein.



Western Blot detection against Immunogen (36.63 KDa) .

**Storage Buffer:** In 1x PBS, pH 7.4

**Storage Instruction:** Store at -20°C or lower. Aliquot to avoid repeated freezing and thawing.

**MSDS:** [Download](#)

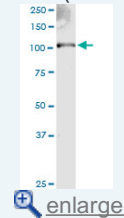
**Datasheet:** [Download](#)

### Applications

Western Blot (Tissue lysate)

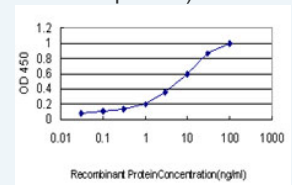
### Application Image

Western Blot (Tissue lysate)

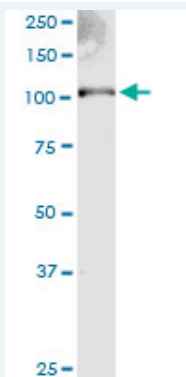


Western Blot (Recombinant protein)

Sandwich ELISA (Recombinant protein)



ELISA



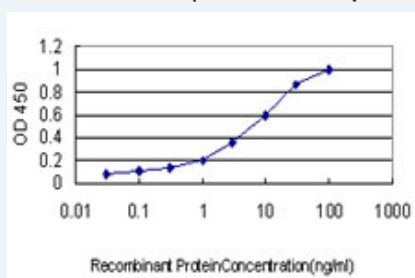
EXT2 monoclonal antibody (M01), clone 3G6. Western Blot analysis of EXT2 expression in human spleen.

[Protocol Download](#)

#### Western Blot (Recombinant protein)

[Protocol Download](#)

#### Sandwich ELISA (Recombinant protein)



Detection limit for recombinant GST tagged EXT2 is approximately 0.1 ng/ml as a capture antibody.

[Protocol Download](#)

#### ELISA

#### Gene Information

Entrez GeneID: [2132](#)

GeneBank [BC010058](#)

Accession#:

Protein [AAH10058](#)

Accession#:

Gene Name: EXT2

Gene Alias: SOTV

Gene Description: exostoses (multiple) 2

Description:

Omim ID: [133701](#), [608210](#)

Gene Ontology: [Hyperlink](#)

**Gene Summary:** This gene encodes one of two glycosyltransferases involved in the chain elongation step of heparan sulfate biosynthesis. Mutations in this gene cause the type II form of multiple exostoses. Alternatively spliced transcript variants encoding different isoforms have been noted for this gene. [provided by RefSeq]

**Other Designations:** Glucuronosyl-N-acetylglucosaminyl-proteoglycan 4-alpha-N-acetylglucosaminyltransferase, N-acetylglucosaminyl-proteoglycan 4-beta-glucuronosyltransferase, exostosin 2

## Gene Pathway

---

[Heparan sulfate biosynthesis](#) [Metabolic pathways](#)

## Related Disease

---

[Cardiovascular Diseases](#) [Coronary Disease](#) [Diabetes Mellitus](#) [Diabetes Mellitus, Type 2](#)  
[Edema](#) [Exostoses, Multiple Hereditary](#) [Genetic Predisposition to Disease](#)  
[Glucose Intolerance](#) [HIV Infections](#) [Hyperglycemia](#) [Obesity](#) [Tobacco Use Disorder](#)

---

[服務條款](#) | [隱私權政策](#) | [著作及商標](#) | [網站地圖](#)

©2016 亞諾法生技股份有限公司 Abnova Corporation. 版權所有.