



# SZABO SCANDIC

Part of Europa Biosite

## Produktinformation



Forschungsprodukte & Biochemikalien



Zellkultur & Verbrauchsmaterial



Diagnostik & molekulare Diagnostik



Laborgeräte & Service

Weitere Information auf den folgenden Seiten!  
See the following pages for more information!



### Lieferung & Zahlungsart

siehe unsere [Liefer- und Versandbedingungen](#)

### Zuschläge

- Mindermengenzuschlag
- Trockeneiszuschlag
- Gefahrgutzuschlag
- Expressversand

### SZABO-SCANDIC HandelsgmbH

Quellenstraße 110, A-1100 Wien

T. +43(0)1 489 3961-0

F. +43(0)1 489 3961-7

[mail@szabo-scandic.com](mailto:mail@szabo-scandic.com)

[www.szabo-scandic.com](http://www.szabo-scandic.com)

[linkedin.com/company/szaboscandic](https://www.linkedin.com/company/szaboscandic) 

## EXTL1 polyclonal antibody (A01)

Catalog # : H00002134-A01

規格 : [ 50 uL ]

[List All](#)

### Specification

**Product Description:** Mouse polyclonal antibody raised against a partial recombinant EXTL1.

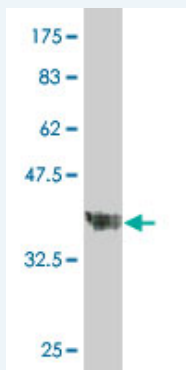
**Immunogen:** EXTL1 (NP\_004446, 141 a.a. ~ 241 a.a) partial recombinant protein with GST tag.

**Sequence:** AQTGECSSMPLQWNRGRNHLVLRLLHPAPCPRTFQLGQAMVAEASPTV  
DSFRPGFDVALPFLPEAHPLRGGAPGQLRQHSPQPGVALLALEEERGG  
WRTADT

**Host:** Mouse

**Reactivity:** Human

**Quality Control Testing:** Antibody Reactive Against Recombinant Protein.



Western Blot detection against Immunogen (37.22 KDa) .

**Storage Buffer:** 50 % glycerol

**Storage Instruction:** Store at -20°C or lower. Aliquot to avoid repeated freezing and thawing.

**MSDS:** [Download](#)

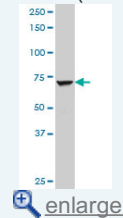
**Datasheet:** [Download](#)

### Applications

Western Blot (Cell lysate)

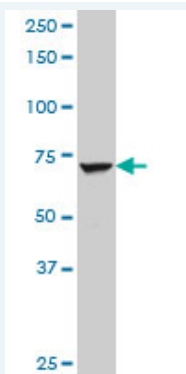
### Application Image

Western Blot (Cell lysate)



Western Blot (Recombinant protein)


ELISA



EXTL1 polyclonal antibody (A01), Lot # 060717JCS1 Western Blot analysis of EXTL1 expression in SJCRH30 ( Cat # L027V1 ).

 [Protocol Download](#)

#### Western Blot (Recombinant protein)

 [Protocol Download](#)

#### ELISA

#### Gene Information

**Entrez GeneID:** [2134](#)

**GeneBank Accession#:** [NM\\_004455](#)

**Protein Accession#:** [NP\\_004446](#)

**Gene Name:** EXTL1

**Gene Alias:** EXTL,MGC70794

**Gene Description:** exostoses (multiple)-like 1

**Omim ID:** [601738](#)

**Gene Ontology:** [Hyperlink](#)

**Gene Summary:** This gene is a member of the multiple exostoses (EXT) family of glycosyltransferases, which function in the chain polymerization of heparan sulfate and heparin. The encoded protein harbors alpha 1,4-N-acetylglucosaminyltransferase activity, and is involved in chain elongation of heparan sulfate and possibly heparin. [provided by RefSeq]

**Other Designations:** OTTHUMP00000008700,alpha-N-acetylglucosaminyltransferase II,exostosin-L,glucuronosyl-N-acetylglucosaminyl-proteoglycan 4-alpha-N-acetylglucosaminyltransferase,glucuronyl-N-acetylglucosaminylproteoglycan alpha-1,4-N-acetylglucose

#### Gene Pathway

[Heparan sulfate biosynthesis](#) [Metabolic pathways](#)