



SZABO SCANDIC

Part of Europa Biosite

Produktinformation



Forschungsprodukte & Biochemikalien



Zellkultur & Verbrauchsmaterial



Diagnostik & molekulare Diagnostik



Laborgeräte & Service

Weitere Information auf den folgenden Seiten!
See the following pages for more information!



Lieferung & Zahlungsart

siehe unsere [Liefer- und Versandbedingungen](#)

Zuschläge

- Mindermengenzuschlag
- Trockeneiszuschlag
- Gefahrgutzuschlag
- Expressversand

SZABO-SCANDIC HandelsgmbH

Quellenstraße 110, A-1100 Wien

T. +43(0)1 489 3961-0

F. +43(0)1 489 3961-7

mail@szabo-scandic.com

www.szabo-scandic.com

[linkedin.com/company/szaboscandic](https://www.linkedin.com/company/szaboscandic) 

EXTL2 MaxPab mouse polyclonal antibody (B02) MaxPab®

Catalog # : H00002135-B02

規格 : [50 uL]

[List All](#)

Specification

Product Description: Mouse polyclonal antibody raised against a full-length human EXTL2 protein.

Immunogen: EXTL2 (NP_001028197.1, 1 a.a. ~ 330 a.a) full-length human protein.

Sequence:
 MRCCHICKLPGRVVMGIRVLRSLVWLVLLVAGALTALLPSVKEDKMLML
 RREIKSQGKSTMSFSLIMQTYNRTDLLKLLNHYQAVPNLHKVIVWVNNI
 GEKAPDELWNSLGPHPIPVIKQQTANRMRNRLQVFPELETNAVLMVDD
 DTLISTPDLVFAFSVWQQFPDQIVGFVPRKHVSTSSGIYSYGSFEMQAP
 GSGNGDQYSMLIGASFFNSKYLELFQRQPAAVHALIDDTQNCDDIAMN
 FIIAKHIGKTSIGIFVKPVNMDNLEKETNSGYSGMWHRAEHALQRSYCINKL
 VNIYDSMPLRYSNIMISQGFPPYANYKRKI

Host: Mouse

Reactivity: Human

Quality Control Testing: Antibody reactive against mammalian transfected lysate.

Storage Buffer: No additive

Storage Instruction: Store at -20°C or lower. Aliquot to avoid repeated freezing and thawing.

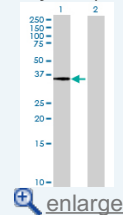
Note: For IHC and IF applications, antibody purification with Protein A will be needed prior to use.

MSDS: [Download](#)

Datasheet: [Download](#)

Application Image

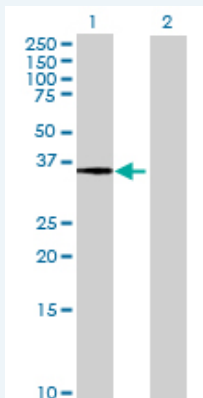
Western Blot (Transfected lysate)



[enlarge](#)

Applications

Western Blot (Transfected lysate)



Western Blot analysis of EXTL2 expression in transfected 293T cell line ([H00002135-T02](#)) by EXTL2 MaxPab polyclonal antibody.

Lane 1: EXTL2 transfected lysate(36.3 KDa).

Lane 2: Non-transfected lysate.

Gene Information

Entrez GeneID: [2135](#)

**GeneBank
Accession#:** [NM_001033025.1](#)

**Protein
Accession#:** [NP_001028197.1](#)

Gene Name: EXTL2

Gene Alias: EXTR2

**Gene
Description:** exostoses (multiple)-like 2

Omim ID: [602411](#)

Gene Ontology: [Hyperlink](#)

**Other
Designations:** OTTHUMP00000013586,OTTHUMP00000013587,alpha-1,4-N-
acteylhexosaminyltransferase,exostosin-like 2,multiple exostoses-like 2

Gene Pathway

[Heparan sulfate biosynthesis](#)