



# SZABO SCANDIC

Part of Europa Biosite

## Produktinformation



Forschungsprodukte & Biochemikalien



Zellkultur & Verbrauchsmaterial



Diagnostik & molekulare Diagnostik



Laborgeräte & Service

Weitere Information auf den folgenden Seiten!  
See the following pages for more information!



### Lieferung & Zahlungsart

siehe unsere [Liefer- und Versandbedingungen](#)

### Zuschläge

- Mindermengenzuschlag
- Trockeneiszuschlag
- Gefahrgutzuschlag
- Expressversand

### SZABO-SCANDIC HandelsgmbH

Quellenstraße 110, A-1100 Wien

T. +43(0)1 489 3961-0

F. +43(0)1 489 3961-7

[mail@szabo-scandic.com](mailto:mail@szabo-scandic.com)

[www.szabo-scandic.com](http://www.szabo-scandic.com)

[linkedin.com/company/szaboscandic](https://www.linkedin.com/company/szaboscandic) 

## EXTL2 purified MaxPab rabbit polyclonal antibody (D01P) MaxPab®

Catalog # : H00002135-D01P

規格 : [ 100 ug ]

[List All](#)

### Specification

**Product Description:** Rabbit polyclonal antibody raised against a full-length human EXTL2 protein.

**Immunogen:** EXTL2 (NP\_001028197.1, 1 a.a. ~ 330 a.a) full-length human protein.

**Sequence:**  
 MRCCHICKLPGRVMGIRVLRSLVWLVLLVAGALTALLPSVKEDKMLML  
 RREIKSQGKSTMDSFTLIMQTYNRTDLLKLLNHYQAVPNLHKVIVWVNNI  
 GEKAPDELWNSLGPHPIPVIKQQTANRMRNRLQVFPELETNAVLMVDD  
 DTLISTPDLVFAFSVWQQFPDQIVGFVPRKHVSTSSGIYSYGSFEMQAP  
 GSGNGDQYSMVLIGASFFNSKYLELFQRQPAAVHALIDDTQNCDDIAMN  
 FIIAKHIGKTSIGIFVKPVNMDNLEKETNSGYSGMWVHRAEHALQRSYCINKL  
 VNIYDSMPLRYSNIMISQGFPPYANYKRKI

**Host:** Rabbit

**Reactivity:** Human

**Quality Control Testing:** Antibody reactive against mammalian transfected lysate.

**Storage Buffer:** In 1x PBS, pH 7.4

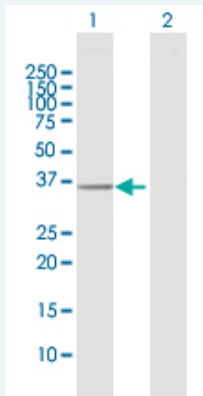
**Storage Instruction:** Store at -20°C or lower. Aliquot to avoid repeated freezing and thawing.

**MSDS:**  [Download](#)

**Datasheet:**  [Download](#)

### Applications

#### Western Blot (Transfected lysate)



Western Blot analysis of EXTL2 expression in transfected 293T cell line (H00002135-T02) by EXTL2 MaxPab polyclonal antibody.

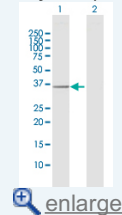
Lane 1: EXTL2 transfected lysate(37.50 KDa).


Lane 2: Non-transfected lysate.

 [Protocol Download](#)

### Application Image

Western Blot (Transfected lysate)



 [enlarge](#)

## Gene Information

---

**Entrez GeneID:** [2135](#)

---

**GeneBank  
Accession#:** [NM\\_001033025.1](#)

---

**Protein  
Accession#:** [NP\\_001028197.1](#)

---

**Gene Name:** EXTL2

---

**Gene Alias:** EXTR2

---

**Gene  
Description:** exostoses (multiple)-like 2

---

**Omim ID:** [602411](#)

---

**Gene Ontology:** [Hyperlink](#)

---

**Other  
Designations:** OTTHUMP00000013586,OTTHUMP00000013587,alpha-1,4-N-  
acteylhexosaminyltransferase,exostosin-like 2,multiple exostoses-like 2

---

## Gene Pathway

---

[Heparan sulfate biosynthesis](#)

---

[服務條款](#) | [隱私權政策](#) | [著作及商標](#) | [網站地圖](#)

©2016 亞諾法生技股份有限公司 Abnova Corporation. 版權所有.