



SZABO SCANDIC

Part of Europa Biosite

Produktinformation



Forschungsprodukte & Biochemikalien



Zellkultur & Verbrauchsmaterial



Diagnostik & molekulare Diagnostik



Laborgeräte & Service

Weitere Information auf den folgenden Seiten!
See the following pages for more information!



Lieferung & Zahlungsart

siehe unsere [Liefer- und Versandbedingungen](#)

Zuschläge

- Mindermengenzuschlag
- Trockeneiszuschlag
- Gefahrgutzuschlag
- Expressversand

SZABO-SCANDIC HandelsgmbH

Quellenstraße 110, A-1100 Wien

T. +43(0)1 489 3961-0

F. +43(0)1 489 3961-7

mail@szabo-scandic.com

www.szabo-scandic.com

[linkedin.com/company/szaboscandic](https://www.linkedin.com/company/szaboscandic) 



EXTL2 purified MaxPab rabbit polyclonal antibody (D02P) MaxPab®

Catalog # : H00002135-D02P

規格 : [100 ug]

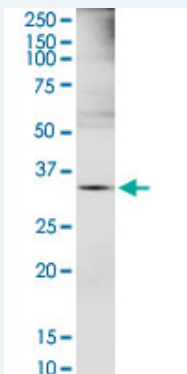
[List All](#)

Specification

Product Description:	Rabbit polyclonal antibody raised against a full-length human EXTL2 protein.
Immunogen:	EXTL2 (AAH36015.1, 39 a.a. ~ 330 a.a) full-length human protein.
Sequence:	LLPSVKEDKMLMLRREIKSQGKSTMDSFTLIMQTYNRTDLLLKLLNHYQA VPLNHKVVVWNNIGEKAPDELWNSLGPHPIPVIKQQTANRMRNRLQVF PELETNAVLMVDDDTLISTPDLVFAFSWQQFPDQIVGFVPRKHVSTSS GIYSYGSFEMQAPGSGNGDQYSMLIGASFFNSKYLELFQRQPAAVHALI DDTQNCDDIAMNFIIAKHIGKTSKIFVKPVNMDNLEKETNSGYSGMWHRA EHALQRSYCINKLVNIYDSMPLRYSNITISQGFPPYANYKRKI
Host:	Rabbit
Reactivity:	Human, Mouse
Quality Control Testing:	Antibody reactive against mammalian transfected lysate.
Storage Buffer:	In 1x PBS, pH 7.4
Storage Instruction:	Store at -20°C or lower. Aliquot to avoid repeated freezing and thawing.
MSDS:	 Download
Datasheet:	 Download

Applications

Western Blot (Tissue lysate)



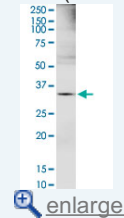
EXTL2 MaxPab rabbit polyclonal antibody. Western Blot analysis of EXTL2 expression in mouse brain.

 [Protocol Download](#)

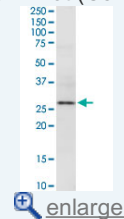
Western Blot (Cell lysate)

Application Image

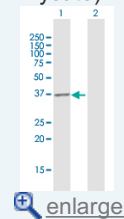
Western Blot (Tissue lysate)

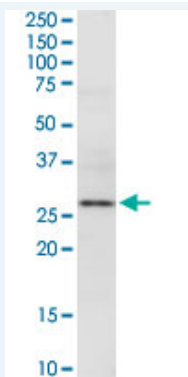


Western Blot (Cell lysate)



Western Blot (Transfected lysate)

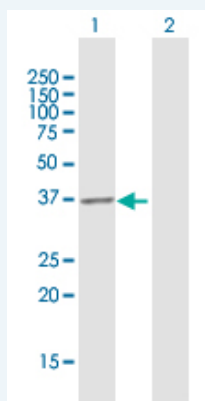




EXTL2 MaxPab rabbit polyclonal antibody. Western Blot analysis of EXTL2 expression in HeLa S3 NE.

 [Protocol Download](#)

Western Blot (Transfected lysate)



Western Blot analysis of EXTL2 expression in transfected 293T cell line ([H00002135-T01](#)) by EXTL2 MaxPab polyclonal antibody.

Lane 1: EXTL2 transfected lysate(32.23 KDa).
Lane 2: Non-transfected lysate.

 [Protocol Download](#)

Gene Information

Entrez GeneID: [2135](#)

GeneBank Accession#: [BC036015.1](#)

Protein Accession#: [AAH36015.1](#)

Gene Name: EXTL2

Gene Alias: EXTR2

Gene Description: exostoses (multiple)-like 2

Omim ID: [602411](#)

Gene Ontology: [Hyperlink](#)

Other Designations: OTTHUMP00000013586,OTTHUMP00000013587,alpha-1,4-N-acetylhexosaminyltransferase,exostosin-like 2,multiple exostoses-like 2

Gene Pathway

[Heparan sulfate biosynthesis](#)

[服務條款](#) | [隱私權政策](#) | [著作及商標](#) | [網站地圖](#)

©2016 亞諾法生技股份有限公司 Abnova Corporation. 版權所有.