



SZABO SCANDIC

Part of Europa Biosite

Produktinformation



Forschungsprodukte & Biochemikalien



Zellkultur & Verbrauchsmaterial



Diagnostik & molekulare Diagnostik



Laborgeräte & Service

Weitere Information auf den folgenden Seiten!
See the following pages for more information!



Lieferung & Zahlungsart

siehe unsere [Liefer- und Versandbedingungen](#)

Zuschläge

- Mindermengenzuschlag
- Trockeneiszuschlag
- Gefahrgutzuschlag
- Expressversand

SZABO-SCANDIC HandelsgmbH

Quellenstraße 110, A-1100 Wien

T. +43(0)1 489 3961-0

F. +43(0)1 489 3961-7

mail@szabo-scandic.com

www.szabo-scandic.com

[linkedin.com/company/szaboscandic](https://www.linkedin.com/company/szaboscandic) 

EZH2 monoclonal antibody (M01), clone 2C3

Catalog # : H00002146-M01

規格 : [100 ug]

[List All](#)

Specification

Product Description: Mouse monoclonal antibody raised against a partial recombinant EZH2.

Immunogen: EZH2 (AAH10858, 1 a.a. ~ 110 a.a) partial recombinant protein with GST tag. MW of the GST tag alone is 26 KDa.

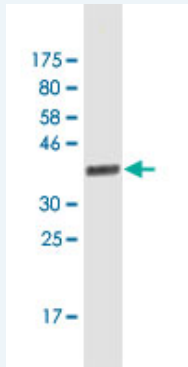
Sequence: MGQTGKKSEKGPVCWRKRVKSEYMRLRQLKRFRRRADEVKSMFSSNRQ
KILERTEILNQEWKQRRRIQPVHILTSVSSLRGTRECSVTSDDLDFPTQVIPLK
TLNAVASVPIM

Host: Mouse

Reactivity: Human

Isotype: IgG2b Kappa

Quality Control Testing: Antibody Reactive Against Recombinant Protein.



Western Blot detection against Immunogen (37.84 KDa) .

Storage Buffer: In 1x PBS, pH 7.4

Storage Instruction: Store at -20°C or lower. Aliquot to avoid repeated freezing and thawing.

MSDS: [Download](#)

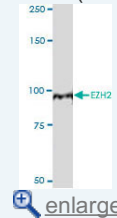
Datasheet: [Download](#)

Applications

Western Blot (Cell lysate)

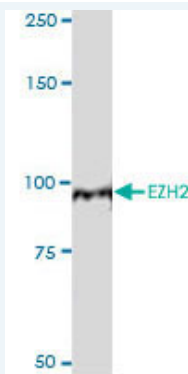
Application Image

Western Blot (Cell lysate)




Western Blot (Recombinant protein)


ELISA



EZH2 monoclonal antibody (M01) , clone 2C3 recognizes the appropriate size (95 KDa) full length protein in human prostate cancer cells (DU145, whole cell extract made in modified RIPA buffer) , Primary Ab dilution = 1 : 1000. Mouse-HRPO dilution = 1 : 25000.

 [Protocol Download](#)

Western Blot (Recombinant protein)

 [Protocol Download](#)

ELISA

Gene Information

Entrez GeneID: [2146](#)

GeneBank [BC010858](#)
Accession#:

Protein [AAH10858](#)
Accession#:

Gene Name: EZH2

Gene Alias: ENX-1,EZH1,KMT6,MGC9169

Gene Description: enhancer of zeste homolog 2 (Drosophila)

Omim ID: [601573](#)

Gene Ontology: [Hyperlink](#)

Gene Summary: This gene encodes a member of the Polycomb-group (PcG) family. PcG family members form multimeric protein complexes, which are involved in maintaining the transcriptional repressive state of genes over successive cell generations. This protein associates with the embryonic ectoderm development protein, the VAV1 oncoprotein, and the X-linked nuclear protein. This protein may play a role in the hematopoietic and central nervous systems. Two transcript variants encoding distinct isoforms have been identified for this gene. [provided by RefSeq]

Other Designations: enhancer of zeste 2

Related Disease

[Adenocarcinoma](#) [Carcinoma, Squamous Cell](#) [Genetic Predisposition to Disease](#) [Leukemia](#) [Lung Neoplasms](#) [Lymphoma, Non-Hodgkin](#) [Prostate cancer](#) [Prostatic Neoplasms](#) [Small Cell Lung Carcinoma](#) [Tobacco Use Disorder](#)

