



SZABO SCANDIC

Part of Europa Biosite

Produktinformation



Forschungsprodukte & Biochemikalien



Zellkultur & Verbrauchsmaterial



Diagnostik & molekulare Diagnostik



Laborgeräte & Service

Weitere Information auf den folgenden Seiten!
See the following pages for more information!



Lieferung & Zahlungsart

siehe unsere [Liefer- und Versandbedingungen](#)

Zuschläge

- Mindermengenzuschlag
- Trockeneiszuschlag
- Gefahrgutzuschlag
- Expressversand

SZABO-SCANDIC HandelsgmbH

Quellenstraße 110, A-1100 Wien

T. +43(0)1 489 3961-0

F. +43(0)1 489 3961-7

mail@szabo-scandic.com

www.szabo-scandic.com

[linkedin.com/company/szaboscandic](https://www.linkedin.com/company/szaboscandic) 

F11 (Human) IP-WB Antibody Pair

Catalog # : H00002160-PW2

規格 : [1 Set]

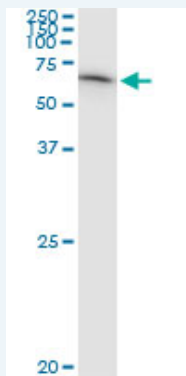
[List All](#)

Specification

Product Description: This IP-WB antibody pair set comes with one antibody for immunoprecipitation and another to detect the precipitated protein in western blot.

Reactivity: Human

Quality Control Testing: Immunoprecipitation-Western Blot (IP-WB)



Immunoprecipitation of F11 transfected lysate using rabbit polyclonal anti-F11 and Protein A Magnetic Bead ([U0007](#)), and immunoblotted with mouse purified polyclonal anti-F11.

Supplied Product: Antibody pair set content:
 1. Antibody pair for IP: rabbit polyclonal anti-F11 (300 ul)
 2. Antibody pair for WB: mouse purified polyclonal anti-F11 (50 ug)

Storage Instruction: Store reagents of the antibody pair set at -20°C or lower. Please aliquot to avoid repeated freeze thaw cycle. Reagents should be returned to -20°C storage immediately after use.

MSDS:  [Download](#)

Applications

Immunoprecipitation-Western Blot

 [Protocol Download](#)

Gene Information

Entrez GeneID: [2160](#)

Gene Name: F11

Gene Alias: FXI,MGC141891

Gene Description: coagulation factor XI

Omim ID: [264900](#)

Gene Ontology: [Hyperlink](#)

Application Image

Immunoprecipitation-Western Blot

Gene Summary: This gene encodes coagulation factor XI of the blood coagulation cascade. This protein is present in plasma as a zymogen, which is a unique plasma coagulation enzyme because it exists as a homodimer consisting of two identical polypeptide chains linked by disulfide bonds. During activation of the plasma factor XI, an internal peptide bond is cleaved by factor XIIa (or XII) in each of the two chains, resulting in activated factor XIa, a serine protease composed of two heavy and two light chains held together by disulfide bonds. This activated plasma factor XI triggers the middle phase of the intrinsic pathway of blood coagulation by activating factor IX. Defects in this factor lead to Rosenthal syndrome, a blood coagulation abnormality. [provided by RefSeq]

Other Designations: plasma thromboplastin antecedent, platelet coagulation factor XI

Gene Pathway

[Complement and coagulation cascades](#)

Related Disease

[Cardiovascular Diseases](#) [Diabetes Mellitus, Type 2](#) [Edema](#) [Factor XI Deficiency](#) [Genetic Predisposition to Disease](#) [Hypertension](#) [Pregnancy-Induced Kidney Failure](#) [Chronic Pre-Eclampsia](#) [Thrombophilia](#) [Venous Thrombosis](#)

[服務條款](#) | [隱私權政策](#) | [著作及商標](#) | [網站地圖](#)

©2016 亞諾法生技股份有限公司 Abnova Corporation. 版權所有.