



SZABO SCANDIC

Part of Europa Biosite

Produktinformation



Forschungsprodukte & Biochemikalien



Zellkultur & Verbrauchsmaterial



Diagnostik & molekulare Diagnostik



Laborgeräte & Service

Weitere Information auf den folgenden Seiten!
See the following pages for more information!



Lieferung & Zahlungsart

siehe unsere [Liefer- und Versandbedingungen](#)

Zuschläge

- Mindermengenzuschlag
- Trockeneiszuschlag
- Gefahrgutzuschlag
- Expressversand

SZABO-SCANDIC HandelsgmbH

Quellenstraße 110, A-1100 Wien

T. +43(0)1 489 3961-0

F. +43(0)1 489 3961-7

mail@szabo-scandic.com

www.szabo-scandic.com

[linkedin.com/company/szaboscandic](https://www.linkedin.com/company/szaboscandic) 

F11 293T Cell Transient Overexpression Lysate(Denatured)

Catalog # : H00002160-T01

規格 : [100 uL]

[List All](#)

Specification

Transfected Cell Line: 293T

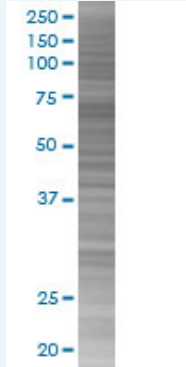
Plasmid: pCMV-F11 full-length

Host: Human

Theoretical MW (kDa): 70.1

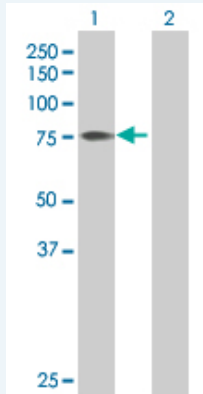
Quality Control Testing: Transient overexpression cell lysate was tested with Anti-F11 antibody (H00002160-B01) by Western Blots.

SDS-PAGE Gel



F11 transfected lysate.

Western Blot



Lane 1: F11 transfected lysate (70.1 KDa)

Lane 2: Non-transfected lysate.

Storage Buffer: 1X Sample Buffer (50 mM Tris-HCl, 2% SDS, 10% glycerol, 300 mM 2-mercaptoethanol, 0.01% Bromophenol blue)

Storage Instruction: Store at -80°C. Aliquot to avoid repeated freezing and thawing.

MSDS:  [Download](#)

Applications

Western Blot

Gene Information

Entrez GeneID: [2160](#)

GeneBank Accession#: [NM_000128.2](#)

Protein Accession#: =

Gene Name: F11

Gene Alias: FXI,MGC141891

Gene Description: coagulation factor XI

Omim ID: [264900](#)

Gene Ontology: [Hyperlink](#)

Gene Summary: This gene encodes coagulation factor XI of the blood coagulation cascade. This protein is present in plasma as a zymogen, which is a unique plasma coagulation enzyme because it exists as a homodimer consisting of two identical polypeptide chains linked by disulfide bonds. During activation of the plasma factor XI, an internal peptide bond is cleaved by factor XIIa (or XII) in each of the two chains, resulting in activated factor XIa, a serine protease composed of two heavy and two light chains held together by disulfide bonds. This activated plasma factor XI triggers the middle phase of the intrinsic pathway of blood coagulation by activating factor IX. Defects in this factor lead to Rosenthal syndrome, a blood coagulation abnormality. [provided by RefSeq]

Other Designations: plasma thromboplastin antecedent,platelet coagulation factor XI

Gene Pathway

[Complement and coagulation cascades](#)

Related Disease

[Cardiovascular Diseases](#) [Diabetes Mellitus, Type 2](#) [Edema](#) [Factor XI Deficiency](#) [Genetic Predisposition to Disease](#) [Hypertension, Pregnancy-Induced](#) [Kidney Failure, Chronic](#) [Pre-Eclampsia](#) [Thrombophilia](#) [Venous Thrombosis](#)