



SZABO SCANDIC

Part of Europa Biosite

Produktinformation



Forschungsprodukte & Biochemikalien



Zellkultur & Verbrauchsmaterial



Diagnostik & molekulare Diagnostik



Laborgeräte & Service

Weitere Information auf den folgenden Seiten!
See the following pages for more information!



Lieferung & Zahlungsart

siehe unsere [Liefer- und Versandbedingungen](#)

Zuschläge

- Mindermengenzuschlag
- Trockeneiszuschlag
- Gefahrgutzuschlag
- Expressversand

SZABO-SCANDIC HandelsgmbH

Quellenstraße 110, A-1100 Wien

T. +43(0)1 489 3961-0

F. +43(0)1 489 3961-7

mail@szabo-scandic.com

www.szabo-scandic.com

[linkedin.com/company/szaboscandic](https://www.linkedin.com/company/szaboscandic) 

F12 monoclonal antibody (M01), clone 3A3

Catalog # : H00002161-M01

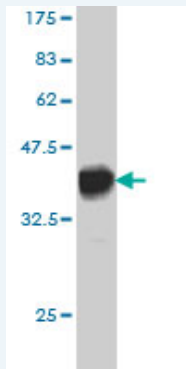
規格 : [100 ug]

[List All](#)

Specification

Product Description:	Mouse monoclonal antibody raised against a partial recombinant F12.
Immunogen:	F12 (AAH12390, 191 a.a. ~ 300 a.a) partial recombinant protein with GST tag. MW of the GST tag alone is 26 KDa.
Sequence:	GHQFEGAE EYASFLQEAQVPFLSLERCSAPDVHGSSILPGMLCAGFLEG GTDACQGDSGGPLVCE DQAAERRLTLQGIIISWGS GCGDRNKPGVYTD VAYYLAWIREHTVS
Host:	Mouse
Reactivity:	Human
Isotype:	IgG2a Kappa

Quality Control Testing: Antibody Reactive Against Recombinant Protein.



Western Blot detection against Immunogen (37.84 KDa) .

Storage Buffer: In 1x PBS, pH 7.4

Storage Instruction: Store at -20°C or lower. Aliquot to avoid repeated freezing and thawing.

MSDS: [Download](#)

Datasheet: [Download](#)

Applications

Western Blot (Recombinant protein)

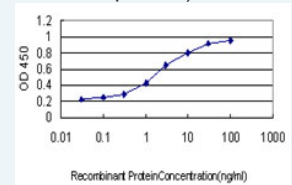
[Protocol Download](#)

Sandwich ELISA (Recombinant protein)

Application Image

Western Blot (Recombinant protein)

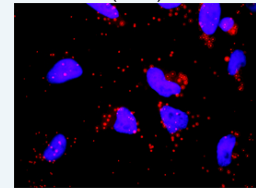
Sandwich ELISA (Recombinant protein)



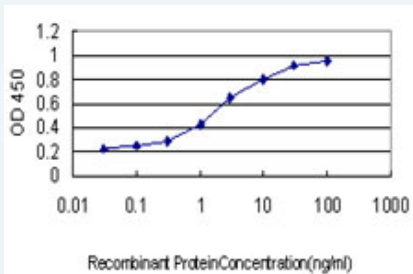
[enlarge](#)

ELISA

In situ Proximity Ligation Assay (Cell)



[enlarge](#)

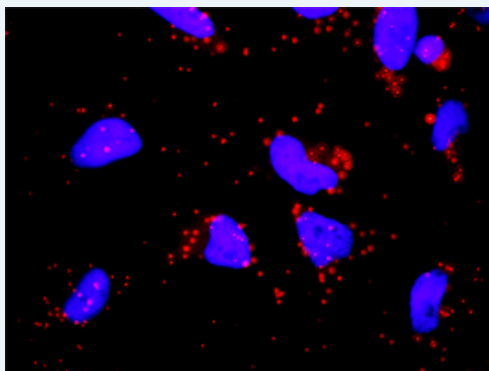


Detection limit for recombinant GST tagged F12 is approximately 0.03ng/ml as a capture antibody.

 [Protocol Download](#)

ELISA

In situ Proximity Ligation Assay (Cell)



Proximity Ligation Analysis of protein-protein interactions between GP1BA and F12. HeLa cells were stained with anti-GP1BA rabbit purified polyclonal 1:1200 and anti-F12 mouse monoclonal antibody 1:50. Each red dot represents the detection of protein-protein interaction complex, and nuclei were counterstained with DAPI (blue).

Gene Information

Entrez GeneID: [2161](#)

GeneBank [BC012390](#)
Accession#:

Protein [AAH12390](#)
Accession#:

Gene Name: F12

Gene Alias: HAE3,HAEX,HAF

Gene Description: coagulation factor XII (Hageman factor)

Omim ID: [234000](#), [610618](#), [610619](#)

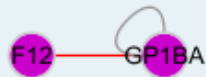
Gene Ontology: [Hyperlink](#)

Gene Summary: This gene encodes coagulation factor XII which circulates in blood as a zymogen. This single chain zymogen is converted to a two-chain serine protease with an heavy chain (alpha-factor XIIa) and a light chain. The heavy chain contains two fibronectin-type domains, two epidermal growth factor (EGF)-like domains, a kringle domain and a proline-rich domain, whereas the light chain contains only a catalytic domain. On activation, further cleavages takes place in the heavy chain, resulting in the production of beta-factor XIIa light chain and the alpha-factor XIIa light chain becomes beta-factor XIIa heavy chain. Prekallikrein is cleaved by factor XII to form kallikrein, which then cleaves factor XII first to alpha-factor XIIa and then to beta-factor XIIa. The active factor XIIa participates in the initiation of blood coagulation, fibrinolysis, and the

generation of bradykinin and angiotensin. It activates coagulation factors VII and XI. Defects in this gene do not cause any clinical symptoms and the sole effect is that whole-blood clotting time is prolonged. [provided by RefSeq]

Other Designations: Hageman factor,coagulation factor XII

Interactome



Gene Pathway

[Complement and coagulation cascades](#)

Related Disease

[Abortion, Habitual](#) [Acute Disease](#) [Angina](#) [Unstable Atherosclerosis](#)
[Blood Coagulation Disorders](#) [Inherited Calcinosis](#) [Cardiovascular Diseases](#)
[Cerebral Infarction](#) [Cerebrovascular Accident](#) [Chorioamnionitis](#) [Chromosome Deletion](#)
[Coronary Artery Disease](#) [Coronary Disease](#) [Diabetes Mellitus, Type 1](#)
[Diabetes Mellitus, Type 2](#) [Diabetic Angiopathies](#) [Disease Progression](#) [Edema](#)
[Factor XII Deficiency](#)

... see more

[服務條款](#) | [隱私權政策](#) | [著作及商標](#) | [網站地圖](#)

©2016 亞諾法生技股份有限公司 Abnova Corporation. 版權所有.