



SZABO SCANDIC

Part of Europa Biosite

Produktinformation



Forschungsprodukte & Biochemikalien



Zellkultur & Verbrauchsmaterial



Diagnostik & molekulare Diagnostik



Laborgeräte & Service

Weitere Information auf den folgenden Seiten!
See the following pages for more information!



Lieferung & Zahlungsart

siehe unsere [Liefer- und Versandbedingungen](#)

Zuschläge

- Mindermengenzuschlag
- Trockeneiszuschlag
- Gefahrgutzuschlag
- Expressversand

SZABO-SCANDIC HandelsgmbH

Quellenstraße 110, A-1100 Wien

T. +43(0)1 489 3961-0

F. +43(0)1 489 3961-7

mail@szabo-scandic.com

www.szabo-scandic.com

[linkedin.com/company/szaboscandic](https://www.linkedin.com/company/szaboscandic) 

FABP3 monoclonal antibody (M01), clone 4F6-1D6

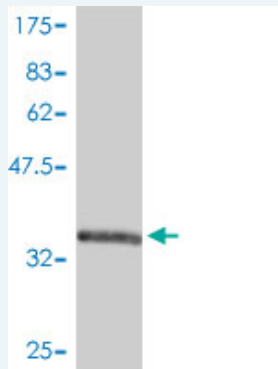
Catalog # : H00002170-M01

規格 : [100 ug]

[List All](#)

Specification

Product Description:	Mouse monoclonal antibody raised against a full length recombinant FABP3.
Immunogen:	FABP3 (AAH07021, 1 a.a. ~ 133 a.a) full-length recombinant protein with GST tag. MW of the GST tag alone is 26 KDa.
Sequence:	MVDAFLGTWKLVD SKNFDDYMKSLGVGFATRQVASMTKPTTII EKNGDI LTLRTHSTFKNTEISFKLGVEFDETTADDRKVKSVTL DGGKLVHLQKWD GQETTLVRELIDGKLILTLTHGTAVCTR TYEKEA
Host:	Mouse
Reactivity:	Human
Isotype:	IgG2a kappa
Quality Control Testing:	Antibody Reactive Against Recombinant Protein.



Western Blot detection against Immunogen (40.37 KDa) .

Storage Buffer: In 1x PBS, pH 7.4

Storage Instruction: Store at -20°C or lower. Aliquot to avoid repeated freezing and thawing.

MSDS: [Download](#)

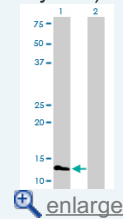
Datasheet: [Download](#)

Applications

Western Blot (Transfected lysate)

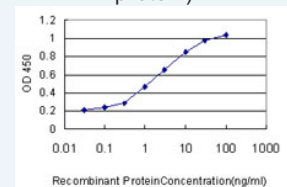
Application Image

Western Blot (Transfected lysate)



Western Blot (Recombinant protein)

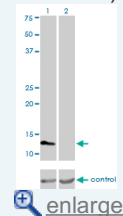
Sandwich ELISA (Recombinant protein)



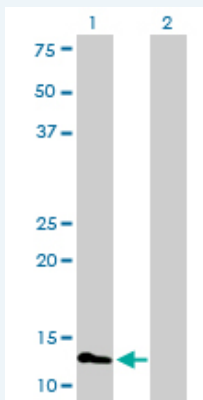
[enlarge](#)

ELISA

RNAi Knockdown (Antibody validated)



[enlarge](#)



Western Blot analysis of FABP3 expression in transfected 293T cell line by FABP3 monoclonal antibody (M01), clone 4F6-1D6.

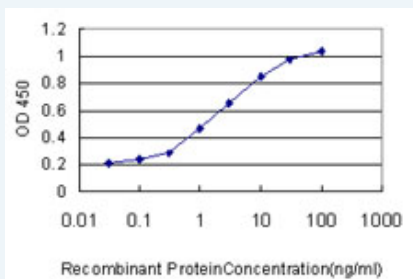
Lane 1: FABP3 transfected lysate(14.9 kDa).
Lane 2: Non-transfected lysate.

[Protocol Download](#)

Western Blot (Recombinant protein)

[Protocol Download](#)

Sandwich ELISA (Recombinant protein)

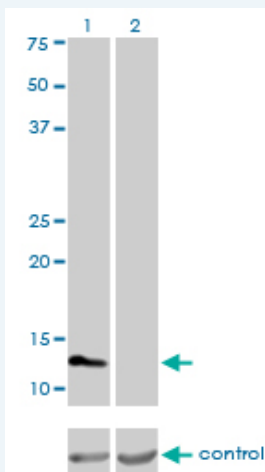


Detection limit for recombinant GST tagged FABP3 is approximately 0.1 ng/ml as a capture antibody.

[Protocol Download](#)

ELISA

RNAi Knockdown (Antibody validated)



Western blot analysis of FABP3 over-expressed 293 cell line, cotransfected with FABP3 Validated Chimera RNAi (Cat # H00002170-R01V) (Lane 2) or non-transfected control (Lane 1). Blot probed with FABP3 monoclonal antibody (M01), clone 4F6-1D6 (Cat # H00002170-M01). GAPDH (36.1 kDa) used as specificity and loading control.

[Protocol Download](#)

Gene Information

Entrez GeneID: [2170](#)

**GeneBank
Accession#:** [BC007021](#)

**Protein
Accession#:** [AAH07021](#)

Gene Name: FABP3

Gene Alias: FABP11,H-FABP,MDGI,O-FABP

**Gene
Description:** fatty acid binding protein 3, muscle and heart (mammary-derived growth inhibitor)

Omim ID: [134651](#)

Gene Ontology: [Hyperlink](#)

Gene Summary: The intracellular fatty acid-binding proteins (FABPs) belongs to a multigene family. FABPs are divided into at least three distinct types, namely the hepatic-, intestinal- and cardiac-type. They form 14-15 kDa proteins and are thought to participate in the uptake, intracellular metabolism and/or transport of long-chain fatty acids. They may also be responsible in the modulation of cell growth and proliferation. Fatty acid-binding protein 3 gene contains four exons and its function is to arrest growth of mammary epithelial cells. This gene is a candidate tumor suppressor gene for human breast cancer. [provided by RefSeq]

**Other
Designations:** Fatty acid-binding protein 3, muscle,OTTHUMP00000003898,fatty acid binding protein 11,fatty acid binding protein 3,mammary-derived growth inhibitor

Gene Pathway

[PPAR signaling pathway](#)

Related Disease

[Anorexia Nervosa](#) [Autistic Disorder](#) [Bipolar Disorder](#) [Bulimia](#) [Cardiovascular Diseases](#)
[Diabetes Mellitus, Type 2](#) [Disease Susceptibility](#) [Edema](#) [Fractures, Bone](#)
[Genetic Predisposition to Disease](#) [Hypertension](#) [Narcolepsy](#) [Schizophrenia](#) [Schizophrenia](#)