



SZABO SCANDIC

Part of Europa Biosite

Produktinformation



Forschungsprodukte & Biochemikalien



Zellkultur & Verbrauchsmaterial



Diagnostik & molekulare Diagnostik



Laborgeräte & Service

Weitere Information auf den folgenden Seiten!
See the following pages for more information!



Lieferung & Zahlungsart

siehe unsere [Liefer- und Versandbedingungen](#)

Zuschläge

- Mindermengenzuschlag
- Trockeneiszuschlag
- Gefahrgutzuschlag
- Expressversand

SZABO-SCANDIC HandelsgmbH

Quellenstraße 110, A-1100 Wien

T. +43(0)1 489 3961-0

F. +43(0)1 489 3961-7

mail@szabo-scandic.com

www.szabo-scandic.com

[linkedin.com/company/szaboscandic](https://www.linkedin.com/company/szaboscandic) 

FANCA MaxPab mouse polyclonal antibody (B01) MaxPab®

Catalog # : H00002175-B01

規格 : [50 uL]

[List All](#)

Specification

Product Description: Mouse polyclonal antibody raised against a full-length human FANCA protein.

Immunogen: FANCA (AAH08979, 1 a.a. ~ 297 a.a) full-length human protein.

Sequence:
 MSDSWVPRSASGQDPGGRRRAWAELLAGRVKREKYNPERAQLKESA
 VRLLRSHQDLNALLLEVEGPLCKKLSLSKVIDCDSSEAYANHSSSFIGSAL
 QDQASRLGVPVGLSAGMVASSVGQICTAPAETSHPVLLTVEQRKKLSSL
 LEFARYLLAHSMFSRLSFCQELWKIQSSLLLEAVWHLHVQGVSLQELLE
 SHPDMHAVGSWLFRNLCCCLCEQMEASCQHADVARAMLSDFVQMFVLR
 GFQKNSDLRRTVEPEKMPQVAVDVLRMLIFALDALAAGVQEESSTHKI
 VRC

Host: Mouse

Reactivity: Human

Quality Control Testing: Antibody reactive against mammalian transfected lysate.

Storage Buffer: No additive

Storage Instruction: Store at -20°C or lower. Aliquot to avoid repeated freezing and thawing.

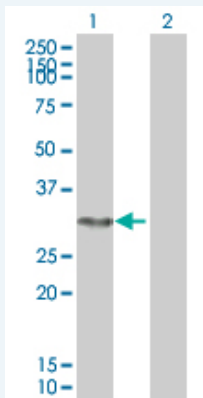
Note: For IHC and IF applications, antibody purification with Protein A will be needed prior to use.

MSDS:  [Download](#)

Datasheet:  [Download](#)

Applications

Western Blot (Transfected lysate)



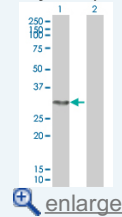
Western Blot analysis of FANCA expression in transfected 293T cell line ([H00002175-T01](#)) by FANCA MaxPab polyclonal antibody.

Lane 1: FANCA transfected lysate(32.78 kDa).

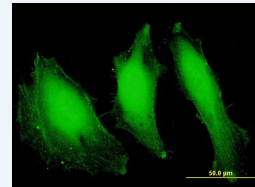
Lane 2: Non-transfected lysate.

Application Image

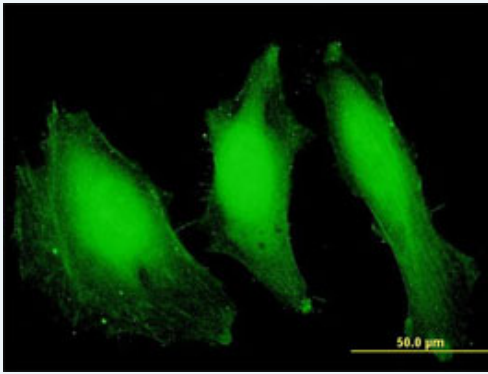
Western Blot (Transfected lysate)




Immunofluorescence



Immunofluorescence



 enlarge this image

Immunofluorescence of purified MaxPab antibody to FANCA on HeLa cell. [antibody concentration 10 ug/ml]

Gene Information

Entrez GeneID: [2175](#)

GeneBank Accession#: [BC008979](#)

Protein Accession#: [AAH08979](#)

Gene Name: FANCA

Gene Alias: FA,FA-H,FA1,FAA,FACA,FAH,FANCH,MGC75158

Gene Description: Fanconi anemia, complementation group A

Omim ID: [227650](#), [607139](#)

Gene Ontology: [Hyperlink](#)

Gene Summary: The Fanconi anemia complementation group (FANC) currently includes FANCA, FANCB, FANCC, FANCD1 (also called BRCA2), FANCD2, FANCE, FANCF, FANCG, FANCI, FANCI (also called BRIP1), FANCL, FANCM and FANCN (also called PALB2). The previously defined group FANCH is the same as FANCA. Fanconi anemia is a genetically heterogeneous recessive disorder characterized by cytogenetic instability, hypersensitivity to DNA crosslinking agents, increased chromosomal breakage, and defective DNA repair. The members of the Fanconi anemia complementation group do not share sequence similarity; they are related by their assembly into a common nuclear protein complex. This gene encodes the protein for complementation group A. Alternative splicing results in multiple transcript variants encoding different isoforms. Mutations in this gene are the most common cause of Fanconi anemia. [provided by RefSeq]

Other Designations: Fanconi anemia, complementation group H,Fanconi anemia, type 1

Related Disease

[Adenocarcinoma Breast cancer Breast Neoplasms Cardiovascular Diseases Diabetes Mellitus, Type 2 Disease Progression Edema Esophageal Neoplasms Fanconi Anemia Genetic Predisposition to Disease Kidney Failure, Chronic Lung Neoplasms Meningeal Neoplasms Meningioma Neoplasms, Glandular and Epithelial Ovarian cancer Ovarian Neoplasms Pancreatic Neoplasms Papillomavirus Infections](#)

... see more

[服務條款](#) | [隱私權政策](#) | [著作及商標](#) | [網站地圖](#)

©2016 亞諾法生技股份有限公司 Abnova Corporation. 版權所有.