



# SZABO SCANDIC

Part of Europa Biosite

## Produktinformation



Forschungsprodukte & Biochemikalien



Zellkultur & Verbrauchsmaterial



Diagnostik & molekulare Diagnostik



Laborgeräte & Service

Weitere Information auf den folgenden Seiten!  
See the following pages for more information!



### Lieferung & Zahlungsart

siehe unsere [Liefer- und Versandbedingungen](#)

### Zuschläge

- Mindermengenzuschlag
- Trockeneiszuschlag
- Gefahrgutzuschlag
- Expressversand

### SZABO-SCANDIC HandelsgmbH

Quellenstraße 110, A-1100 Wien

T. +43(0)1 489 3961-0

F. +43(0)1 489 3961-7

[mail@szabo-scandic.com](mailto:mail@szabo-scandic.com)

[www.szabo-scandic.com](http://www.szabo-scandic.com)

[linkedin.com/company/szaboscandic](https://www.linkedin.com/company/szaboscandic) 

**FANCC purified MaxPab rabbit polyclonal antibody (D01P)** MaxPab®

Catalog # : H00002176-D01P

規格 : [ 100 ug ]

[List All](#)

**Specification**

**Product Description:** Rabbit polyclonal antibody raised against a full-length human FANCC protein.

**Immunogen:** FANCC (NP\_000127.2, 1 a.a. ~ 558 a.a) full-length human protein.

**Sequence:**  
 MAQDSVDLSCDYQFWMQKLSVWDQASTLETQQDTCLHVAQFQEFLR  
 KMYEALKEMDSNTVIERFPTIGQLLAKACWNPFILAYDESEQKILIWCLCCLI  
 NKEPQNSGQSKLNSWIQGVLSHLSALRFDKEVALFTQGLGYAPIDYYPG  
 LLKNMVLSLASELRENHLNGFNTQRRMAPERVASLSRVCVPLITLTDVDP  
 LVEALLICHGREPQEILQPEFFEAVNEAILLKKISLPMSAVVCLWLRHLP  
 EKAMHLFEKLISSENRCLRRIECFIKDSSLPQAACHPAIFRVVDEMFRCA  
 LLETDGALEIIATIQVFTQCFVEALEKASKQLRFALKTYFPYTSPSLAMVLL  
 QDPQDIPRGHWLQTLKHISELLREAVEDQTHGSCGGPFESWFLFIHFGG  
 WAEMVAEQLLMSAAEPPTALLWLLAFYYGPRDGRQRAQTMVQVKAV  
 LGHLLAMSRSSLSAQDLQTVAGQGTDTDLRAPAQQLIRHLLLNFLLLWA  
 PGGHTIAWDVITLMAHTAEITHEIIGFLDQTLYRWNRLGIESPRSEKLAREL  
 LKELRTQV

**Host:** Rabbit

**Reactivity:** Human

**Quality Control Testing:** Antibody reactive against mammalian transfected lysate.

**Storage Buffer:** In 1x PBS, pH 7.4

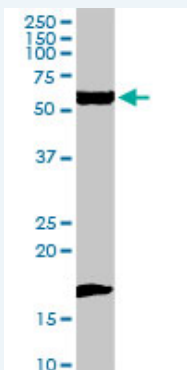
**Storage Instruction:** Store at -20°C or lower. Aliquot to avoid repeated freezing and thawing.

**MSDS:** [Download](#)

**Datasheet:** [Download](#)

**Applications**

**Western Blot (Tissue lysate)**

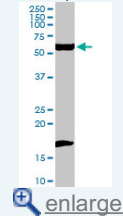


FANCC MaxPab rabbit polyclonal antibody. Western Blot analysis of FANCC expression in human kidney.

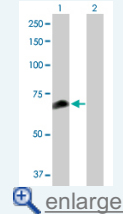
[Protocol Download](#)

**Application Image**

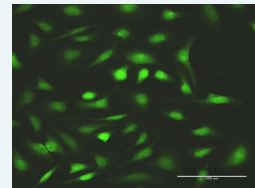
**Western Blot (Tissue lysate)**



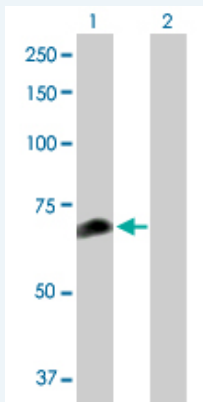
**Western Blot (Transfected lysate)**



**Immunofluorescence**



### Western Blot (Transfected lysate)



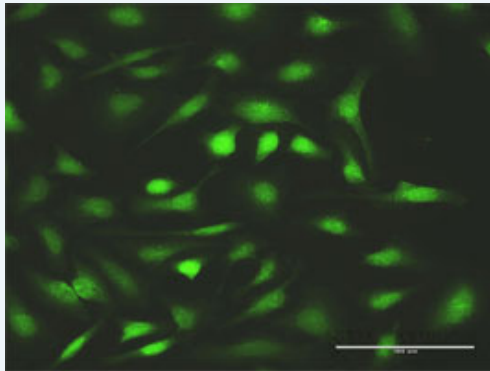
Western Blot analysis of FANCC expression in transfected 293T cell line ([H00002176-T01](#)) by FANCC MaxPab polyclonal antibody.


Lane 1: FANCC transfected lysate(63.40 KDa).

Lane 2: Non-transfected lysate.


 [Protocol Download](#)

### Immunofluorescence



 [enlarge this image](#)

Immunofluorescence of [purified](#) MaxPab antibody to FANCC on HeLa cell. [antibody concentration 10 ug/ml]

 [Protocol Download](#)

### Gene Information

Entrez GeneID: [2176](#)

GeneBank [NM\\_000136.2](#)

Accession#:

Protein [NP\\_000127.2](#)

Accession#:

Gene Name: FANCC

Gene Alias: FA3,FAC,FACC,FLJ14675

Gene Description: Fanconi anemia, complementation group C

Description:

Omim ID: [227645](#)

Gene Ontology: [Hyperlink](#)

**Gene Summary:** The Fanconi anemia complementation group (FANC) currently includes FANCA, FANCB, FANCC, FANCD1 (also called BRCA2), FANCD2, FANCE, FANCF, FANCG, FANCI, FANCI (also called BRIP1), FANCL, FANCM and FANCN (also called PALB2). The previously defined group FANCH is the same as FANCA. Fanconi anemia is a genetically heterogeneous recessive disorder characterized by cytogenetic

instability, hypersensitivity to DNA crosslinking agents, increased chromosomal breakage, and defective DNA repair. The members of the Fanconi anemia complementation group do not share sequence similarity; they are related by their assembly into a common nuclear protein complex. This gene encodes the protein for complementation group C. [provided by RefSeq

---

**Other Designations:** OTTHUMP00000021706,OTTHUMP00000021707,bA80I15.1 (Fanconi anemia, complementation group C, protein)

---

#### **Related Disease**

---

[Adenocarcinoma](#) [Bloom Syndrome](#) [Breast cancer](#) [Breast Neoplasms](#)  
[Carcinoma, Pancreatic Ductal](#) [Carcinoma, Papillary](#) [Cardiovascular Diseases](#)  
[Cystic fibrosis](#) [Diabetes Mellitus, Type 2](#) [Edema](#) [Fanconi Anemia](#) [Gaucher disease](#)  
[Genetic Diseases, Inborn](#) [Genetic Predisposition to Disease](#) [Neoplasms](#)  
[Neoplasms, Glandular and Epithelial](#) [Ovarian cancer](#) [Ovarian Neoplasms](#)  
[Pancreatic cancer](#)

... see more

---

[服務條款](#) | [隱私權政策](#) | [著作及商標](#) | [網站地圖](#)

©2016 亞諾法生技股份有限公司 Abnova Corporation. 版權所有.