



SZABO SCANDIC

Part of Europa Biosite

Produktinformation



Forschungsprodukte & Biochemikalien



Zellkultur & Verbrauchsmaterial



Diagnostik & molekulare Diagnostik



Laborgeräte & Service

Weitere Information auf den folgenden Seiten!
See the following pages for more information!



Lieferung & Zahlungsart

siehe unsere [Liefer- und Versandbedingungen](#)

Zuschläge

- Mindermengenzuschlag
- Trockeneiszuschlag
- Gefahrgutzuschlag
- Expressversand

SZABO-SCANDIC HandelsgmbH

Quellenstraße 110, A-1100 Wien

T. +43(0)1 489 3961-0

F. +43(0)1 489 3961-7

mail@szabo-scandic.com

www.szabo-scandic.com

[linkedin.com/company/szaboscandic](https://www.linkedin.com/company/szaboscandic) 



FANCE purified MaxPab mouse polyclonal antibody (B01P) MaxPab®

Catalog # : H00002178-B01P

規格 : [50 ug]

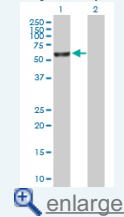
List All

Specification

Product Description:	Mouse polyclonal antibody raised against a full-length human FANCE protein.
Immunogen:	FANCE (NP_068741.1, 1 a.a. ~ 536 a.a) full-length human protein.
Sequence:	MATPDAGLPGAEGVEPAPWAQLEAPARLLLQALQAGPEGARRGLGVL RALGSRGWEPFDWGRLLLEALCREEPVQGPDRLELKPLLLRRLPRICQ RNLMSLLMAVRPSLPESGLLSVLQIAQQDLAPDPDAWLRALGELLRRDL GVGTSMEGASPLSERCQRQLQSLCRGLGLGRRRLKSPQAPDPEEEEN RDSQQPGKRRKDSEEEAASPEGKRVPKRLRCWEEEDHEKERPEHKSL ESLADGGSASPIKDQPVMAVKTGEDGSNLDDAKGLAESLELPKAIQDQL PRLQQLLKTLEEGLEGLDAPPVELQLLHECSPSQMDLLCAQLQLPQLS DLGLLRLCTWLLALSPDLSLSNATVLRSLFLGRILSLTSSASRLLTTALT SFCAKYTYPVCSALLDPVLQAPGTGPAQTELLCCLVKMESLEPDAQVLM LGQILELPWKEETFVLVQSLLERQVEMTPEKFSVLMEKLCCKKGLAATTS MAYAKLMLTVMTKYQANITETQRLGLAMALEPNTTFLRKSLSKAALKHLGP
Host:	Mouse
Reactivity:	Human
Quality Control Testing:	Antibody reactive against mammalian transfected lysate.
Storage Buffer:	In 1x PBS, pH 7.4
Storage Instruction:	Store at -20°C or lower. Aliquot to avoid repeated freezing and thawing.
MSDS:	 Download
Datasheet:	 Download

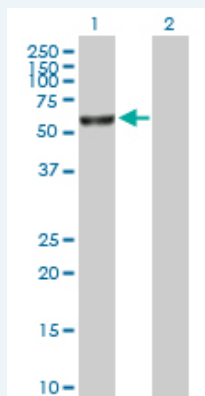
Application Image

Western Blot (Transfected lysate)



Applications

Western Blot (Transfected lysate)



Western Blot analysis of FANCE expression in transfected 293T cell line (H00002178-T01) by FANCE MaxPab polyclonal antibody.

Lane1:FANCE transfected lysate(58.96 KDa).

Gene Information

Entrez GeneID: [2178](#)

**GeneBank
Accession#:** [NM_021922.2](#)

**Protein
Accession#:** [NP_068741.1](#)

Gene Name: FANCE

Gene Alias: FACE,FAE

**Gene
Description:** Fanconi anemia, complementation group E

Omim ID: [600901](#)

Gene Ontology: [Hyperlink](#)

Gene Summary: The Fanconi anemia complementation group (FANC) currently includes FANCA, FANCB, FANCC, FANCD1 (also called BRCA2), FANCD2, FANCE, FANCF, FANCG, FANCI, FANCI (also called BRIP1), FANCL, FANCM and FANCN (also called PALB2). The previously defined group FANCH is the same as FANCA. Fanconi anemia is a genetically heterogeneous recessive disorder characterized by cytogenetic instability, hypersensitivity to DNA crosslinking agents, increased chromosomal breakage, and defective DNA repair. The members of the Fanconi anemia complementation group do not share sequence similarity; they are related by their assembly into a common nuclear protein complex. This gene encodes the protein for complementation group E. [provided by RefSeq]

**Other
Designations:** OTTHUMP00000016254

Related Disease

[Adenocarcinoma Breast cancer Breast Neoplasms Genetic Predisposition to Disease Kidney Failure, Chronic Neoplasms, Glandular and Epithelial Ovarian cancer Ovarian Neoplasms Pancreatic Neoplasms](#)