



# SZABO SCANDIC

Part of Europa Biosite

## Produktinformation



Forschungsprodukte & Biochemikalien



Zellkultur & Verbrauchsmaterial



Diagnostik & molekulare Diagnostik



Laborgeräte & Service

Weitere Information auf den folgenden Seiten!  
See the following pages for more information!



### Lieferung & Zahlungsart

siehe unsere [Liefer- und Versandbedingungen](#)

### Zuschläge

- Mindermengenzuschlag
- Trockeneiszuschlag
- Gefahrgutzuschlag
- Expressversand

### SZABO-SCANDIC HandelsgmbH

Quellenstraße 110, A-1100 Wien

T. +43(0)1 489 3961-0

F. +43(0)1 489 3961-7

[mail@szabo-scandic.com](mailto:mail@szabo-scandic.com)

[www.szabo-scandic.com](http://www.szabo-scandic.com)

[linkedin.com/company/szaboscandic](https://www.linkedin.com/company/szaboscandic) 



**PTK2B purified MaxPab rabbit polyclonal antibody (D01P)** MaxPab®

Catalog # : H00002185-D01P

規格 : [ 100 ug ]

[List All](#)

**Specification**

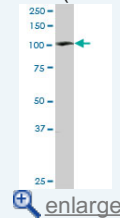
<b>Product Description:</b>	Rabbit polyclonal antibody raised against a full-length human PTK2B protein.
<b>Immunogen:</b>	PTK2B (AAH36651.1, 1 a.a. ~ 1009 a.a) full-length human protein.
<b>Sequence:</b>	MSGVSEPLSRVKLGLRRPEGPAEPMVVVVDVEKEDVRILKVCFYNSN FNPGKNFKLVKCTVQTEIREIITSILLSGRIGPNIRLAECYGLRLKHMKSDEI HWLHPQMTVGEVQDKYECLHVEAEWRYDLQIRYLPEDFMESLKEDRTT LLYFYQQLRNDYMQRYASKVSEGMAQLGCELELRRFFKDMPHNALDKK SNFELLEKEVGLDLFFPKQMENLKPQFRKMIQQTQQYASLREEECV MKFFNTLAGFANIDQETYRCELIQGWNITVDLVIGPKGIRQLTSQDAKPTC LAEFKQIRSIRCLPEEGQAVLQLGIEGAPQALSITKSSLAEAENMADLIDG YCRLLQGEHQGSLIIHPRKDGEKRNSLPQIPMLNLEARRSHLSESCSIESDI YAEIPDETLRRPGGPQYGIAREDVWLNRLGEGFFGEVYEGVYTNHKGEK INAVKTCCKDCTLDNKEKFMSEAVIMKNLDHPHIVKLGIIIEEPTWIIMELY PYGELGHYLERKNKSLKVLTLVLYSLQICKAMAYLESINCVHRDI AVRNLV ASPECVKLGDFGLSRYIEDEDYKASVTRLPIKWMSPESINFRRFTTASD WVMFAVCMWEILSFGKQPFVWLENKDVGIVLEKGDRLPKPDLCPVLYT LMTRCWDYDPSDRPRFTELVCSLSDVYQMEKDIAMEQERNARYRTPKIL EPTAFQEPPPKSRPKYRPPQTNLLAPKLQFQVPEGLCASSPTLTPSPM EYPSVNSLHTPPLHRHNVFKRHSMREEDFIQSSREEAQQLWEAEKVK MRQILDKQKQMVEDYQWLRQEEKSLDPMVYMNDKSPLTPEKEVGYLE FTGPPQKPPRLGAQSIQPTANLDRDLDLVLNVMELVRAVLELKNELCQ LPPEGYVVVKNVGLTLRKLIGSVDDLLPSLPSSSRTEIEGTQKLLNKDLA ELINKMRLAQQNAVTSLSSECKRQMLTASHTLAMDAKNLLDAVDQAKVL ANLAHPPAE
<b>Host:</b>	Rabbit
<b>Reactivity:</b>	Human, Rat
<b>Quality Control Testing:</b>	Antibody reactive against mammalian transfected lysate.
<b>Storage Buffer:</b>	In 1x PBS, pH 7.4
<b>Storage Instruction:</b>	Store at -20°C or lower. Aliquot to avoid repeated freezing and thawing.
<b>MSDS:</b>	 <a href="#">Download</a>
<b>Datasheet:</b>	 <a href="#">Download</a>

**Applications**

**Western Blot (Tissue lysate)**

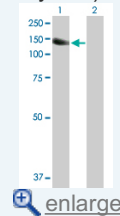
**Application Image**


Western Blot (Tissue lysate)



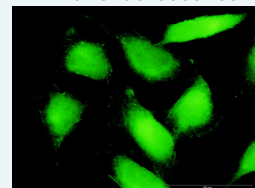
 enlarge

Western Blot (Transfected lysate)



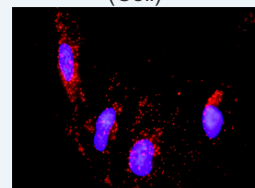
 enlarge

Immunofluorescence



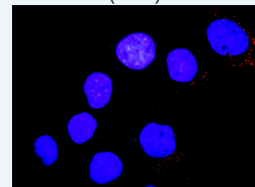
 enlarge

In situ Proximity Ligation Assay (Cell)

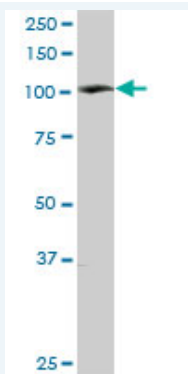


 enlarge

In situ Proximity Ligation Assay (Cell)



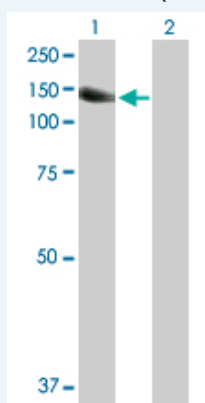
 enlarge



PTK2B MaxPab rabbit polyclonal antibody. Western Blot analysis of PTK2B expression in rat brain.

 [Protocol Download](#)

#### Western Blot (Transfected lysate)



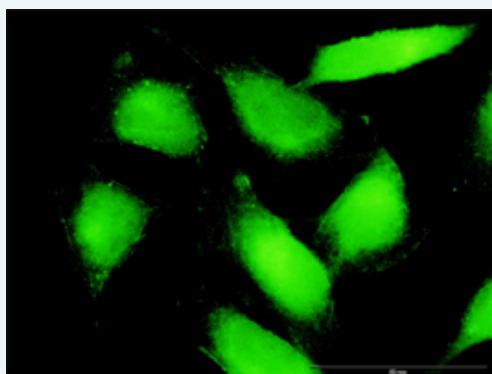
Western Blot analysis of PTK2B expression in transfected 293T cell line ([H00002185-T01](#)) by PTK2B MaxPab polyclonal antibody.


Lane 1: PTK2B transfected lysate(115.90 kDa).

Lane 2: Non-transfected lysate.

 [Protocol Download](#)

#### Immunofluorescence

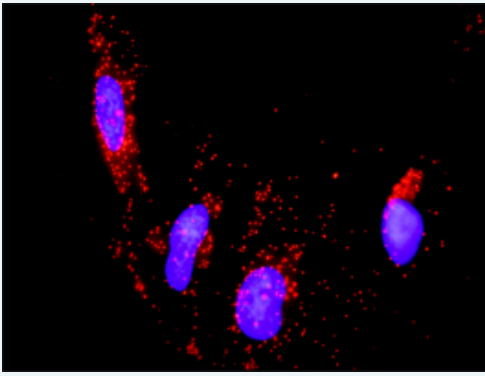


 [enlarge this image](#)

Immunofluorescence of purified MaxPab antibody to PTK2B on HeLa cell. [antibody concentration 30 ug/ml]

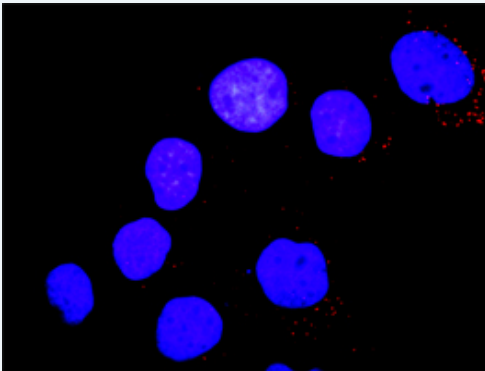
 [Protocol Download](#)

#### *In situ* Proximity Ligation Assay (Cell)



Proximity Ligation Analysis of protein-protein interactions between PTK2B and ERBB2. HeLa cells were stained with anti-PTK2B rabbit purified polyclonal 1:1200 and anti-ERBB2 mouse monoclonal antibody 1:50. Each red dot represents the detection of protein-protein interaction complex, and nuclei were counterstained with DAPI (blue).

#### ***In situ* Proximity Ligation Assay (Cell)**



Proximity Ligation Analysis of protein-protein interactions between PTK2B and YES1. Huh7 cells were stained with anti-PTK2B rabbit purified polyclonal 1:1200 and anti-YES1 mouse monoclonal antibody 1:50. Each red dot represents the detection of protein-protein interaction complex, and nuclei were counterstained with DAPI (blue).

#### **Gene Information**

**Entrez GeneID:** [2185](#)

**GeneBank Accession#:** [BC036651.2](#)

**Protein Accession#:** [AAH36651.1](#)

**Gene Name:** PTK2B

**Gene Alias:** CADTK,CAKB,FADK2,FAK2,FRNK,PKB,PTK,PYK2,RAFTK

**Gene Description:** PTK2B protein tyrosine kinase 2 beta

**Omim ID:** [601212](#)

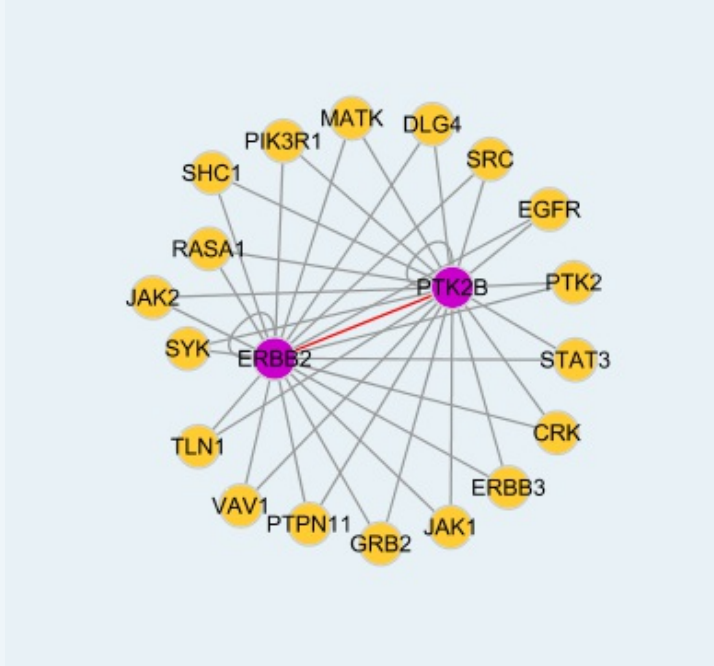
**Gene Ontology:** [Hyperlink](#)

**Gene Summary:** This gene encodes a cytoplasmic protein tyrosine kinase which is involved in calcium-induced regulation of ion channels and activation of the map kinase signaling pathway. The encoded protein may represent an important signaling intermediate between neuropeptide-activated receptors or neurotransmitters that increase calcium flux and the downstream signals that regulate neuronal activity. The encoded protein undergoes rapid tyrosine phosphorylation and activation in response to increases in the intracellular calcium concentration, nicotinic acetylcholine receptor activation, membrane depolarization, or protein kinase C activation. This protein has been shown to bind CRK-

associated substrate, nephrocystin, GTPase regulator associated with FAK, and the SH2 domain of GRB2. The encoded protein is a member of the FAK subfamily of protein tyrosine kinases but lacks significant sequence similarity to kinases from other subfamilies. Four transcript variants encoding two different isoforms have been found for this gene. [provided by RefSeq]

**Other Designations:** CAK beta, OTTHUMP00000128275, OTTHUMP00000162913, calcium-dependent tyrosine kinase, cell adhesion kinase beta, focal adhesion kinase 2, proline-rich tyrosine kinase 2, protein kinase B, protein tyrosine kinase 2 beta, related adhesion focal tyrosine kinase

### Interactome



### Gene Pathway

[Calcium signaling pathway](#) [Chemokine signaling pathway](#) [GnRH signaling pathway](#)  
[Leukocyte transendothelial migration](#) [Natural killer cell mediated cytotoxicity](#)

### Related Disease

[Cardiovascular Diseases](#) [Cell Transformation, Neoplastic](#) [Diabetes Mellitus, Type 2](#) [Edema](#)  
[Genetic Predisposition to Disease](#) [HIV Infections](#) [Hypertension](#) [Insulin Resistance](#)  
[Kidney Failure, Chronic](#) [Melanoma](#) [Skin Neoplasms](#) [Tobacco Use Disorder](#)

[服務條款](#) | [隱私權政策](#) | [著作及商標](#) | [網站地圖](#)

©2016 亞諾法生技股份有限公司 Abnova Corporation. 版權所有.