



SZABO SCANDIC

Part of Europa Biosite

Produktinformation



Forschungsprodukte & Biochemikalien



Zellkultur & Verbrauchsmaterial



Diagnostik & molekulare Diagnostik



Laborgeräte & Service

Weitere Information auf den folgenden Seiten!
See the following pages for more information!



Lieferung & Zahlungsart

siehe unsere [Liefer- und Versandbedingungen](#)

Zuschläge

- Mindermengenzuschlag
- Trockeneiszuschlag
- Gefahrgutzuschlag
- Expressversand

SZABO-SCANDIC HandelsgmbH

Quellenstraße 110, A-1100 Wien

T. +43(0)1 489 3961-0

F. +43(0)1 489 3961-7

mail@szabo-scandic.com

www.szabo-scandic.com

[linkedin.com/company/szaboscandic](https://www.linkedin.com/company/szaboscandic) 

PTK2B monoclonal antibody (M04), clone 3G14

Catalog # : H00002185-M04

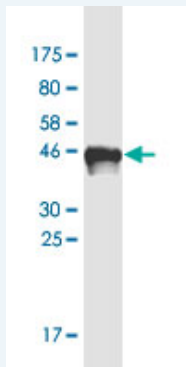
規格 : [50 ug]

[List All](#)

Specification

Product Description:	Mouse monoclonal antibody raised against a partial recombinant PTK2B.
Immunogen:	PTK2B (AAH36651, 682 a.a. ~ 871 a.a) partial recombinant protein with GST tag. MW of the GST tag alone is 26 KDa.
Sequence:	VYQMEKDIAMEQERNARYRTPKILEPTAFQEPPPKPSRPKYRPPPQTNLL APKLQFQVPEGLCASSPTLTSPMEYPSVNSLHTPPLHRHNVFKRHSMR EEDFIQSSREEAQLWEAEKVKMRQILDKQKQMVEDYQWLRQEEKS LDPMVYMNDKSPLTPEKEVGYLEFTGPPQKPPRLGAQSIQPTA
Host:	Mouse
Reactivity:	Human
Isotype:	IgG2a Kappa

Quality Control Testing: Antibody Reactive Against Recombinant Protein.



Western Blot detection against Immunogen (46.53 KDa) .


Storage Buffer: In 1x PBS, pH 7.4

Storage Instruction: Store at -20°C or lower. Aliquot to avoid repeated freezing and thawing.

Datasheet:  [Download](#)

Applications

Western Blot (Recombinant protein)

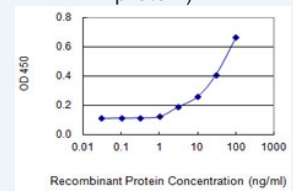
 [Protocol Download](#)

Sandwich ELISA (Recombinant protein)

Application Image

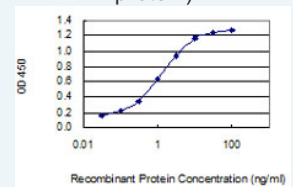
Western Blot (Recombinant protein)

Sandwich ELISA (Recombinant protein)



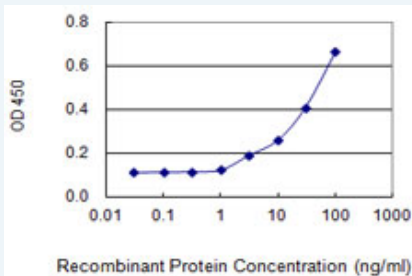
 [enlarge](#)

Sandwich ELISA (Recombinant protein)



 [enlarge](#)

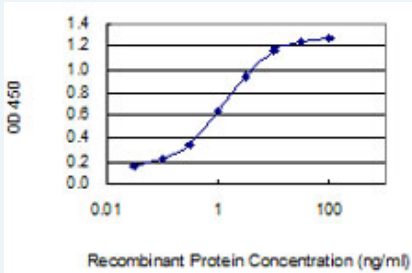
ELISA



Detection limit for recombinant GST tagged PTK2B is 1 ng/ml as a capture antibody.

[Protocol Download](#)

Sandwich ELISA (Recombinant protein)



Detection limit for recombinant GST tagged PTK2B is 0.03 ng/ml as a capture antibody.

[Protocol Download](#)

ELISA

Gene Information

Entrez GeneID: [2185](#)

GeneBank [BC036651](#)
Accession#:

Protein [AAH36651](#)
Accession#:

Gene Name: PTK2B

Gene Alias: CADTK,CAKB,FADK2,FAK2,FRNK,PKB,PTK,PYK2,RAFTK

Gene Description: PTK2B protein tyrosine kinase 2 beta

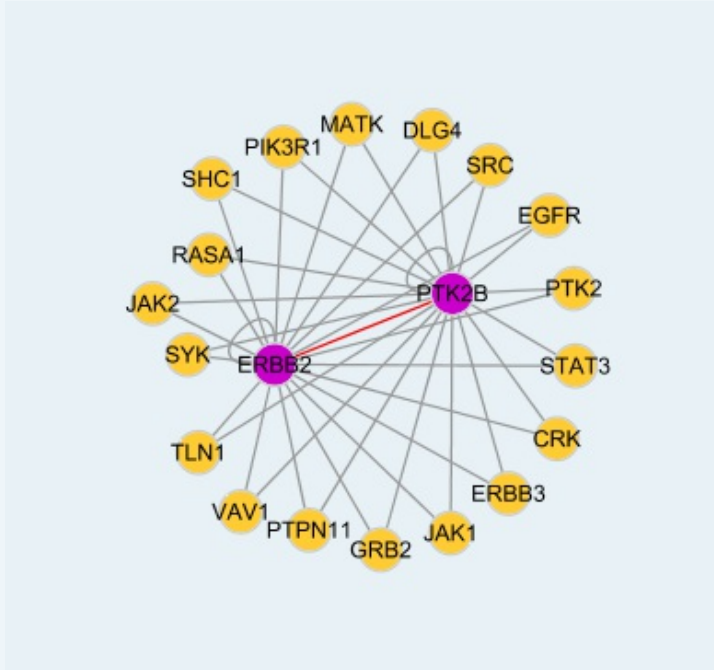
Omim ID: [601212](#)

Gene Ontology: [Hyperlink](#)

Gene Summary: This gene encodes a cytoplasmic protein tyrosine kinase which is involved in calcium-induced regulation of ion channels and activation of the map kinase signaling pathway. The encoded protein may represent an important signaling intermediate between neuropeptide-activated receptors or neurotransmitters that increase calcium flux and the downstream signals that regulate neuronal activity. The encoded protein undergoes rapid tyrosine phosphorylation and activation in response to increases in the intracellular calcium concentration, nicotinic acetylcholine receptor activation, membrane depolarization, or protein kinase C activation. This protein has been shown to bind CRK-associated substrate, nephrocystin, GTPase regulator associated with FAK, and the SH2 domain of GRB2. The encoded protein is a member of the FAK subfamily of protein tyrosine kinases but lacks significant sequence similarity to kinases from other subfamilies. Four transcript variants encoding two different isoforms have been found for this gene. [provided by RefSeq]

Other CAK beta, OTTHUMP00000128275, OTTHUMP00000162913, calcium-dependent tyrosine kinase, cell adhesion kinase beta, focal adhesion kinase 2, proline-rich tyrosine kinase 2, protein kinase B, protein tyrosine kinase 2 beta, related adhesion focal tyrosine kinase

Interactome



Gene Pathway

[Calcium signaling pathway](#) [Chemokine signaling pathway](#) [GnRH signaling pathway](#)
[Leukocyte transendothelial migration](#) [Natural killer cell mediated cytotoxicity](#)

Related Disease

[Cardiovascular Diseases](#) [Cell Transformation, Neoplastic](#) [Diabetes Mellitus, Type 2](#) [Edema](#)
[Genetic Predisposition to Disease](#) [HIV Infections](#) [Hypertension](#) [Insulin Resistance](#)
[Kidney Failure, Chronic](#) [Melanoma](#) [Skin Neoplasms](#) [Tobacco Use Disorder](#)

[服務條款](#) | [隱私權政策](#) | [著作及商標](#) | [網站地圖](#)

©2016 亞諾法生技股份有限公司 Abnova Corporation. 版權所有.