



# SZABO SCANDIC

Part of Europa Biosite

## Produktinformation



Forschungsprodukte & Biochemikalien



Zellkultur & Verbrauchsmaterial



Diagnostik & molekulare Diagnostik



Laborgeräte & Service

Weitere Information auf den folgenden Seiten!  
See the following pages for more information!



### Lieferung & Zahlungsart

siehe unsere [Liefer- und Versandbedingungen](#)

### Zuschläge

- Mindermengenzuschlag
- Trockeneiszuschlag
- Gefahrgutzuschlag
- Expressversand

### SZABO-SCANDIC HandelsgmbH

Quellenstraße 110, A-1100 Wien

T. +43(0)1 489 3961-0

F. +43(0)1 489 3961-7

[mail@szabo-scandic.com](mailto:mail@szabo-scandic.com)

[www.szabo-scandic.com](http://www.szabo-scandic.com)

[linkedin.com/company/szaboscandic](https://www.linkedin.com/company/szaboscandic) 

**FBLN1 purified MaxPab mouse polyclonal antibody (B01P)** MaxPab®

Catalog # : H00002192-B01P

規格 : [ 50 ug ]

[List All](#)

**Specification**

**Product Description:** Mouse polyclonal antibody raised against a full-length human FBLN1 protein.

**Immunogen:** FBLN1 (AAH22497.1, 1 a.a. ~ 683 a.a) full-length human protein.

**Sequence:**  
 MERAAPSRRVPLQLLLLGLLALLAAGVDADVLEACCADGHRMATHQK  
 DCSLPYATESKECRMVQECCCHSQLEELHCATGISLANEQDRCATPHG  
 DNASLEATFVKRCCHCCLLGRAAAQAQQSQCEYSMLVGYQCGQVFRAC  
 CVKSQETGDLVDVGLQETDKIIEVEEEQEDPYLNDRCRGGGPKQQCR  
 DTGDEVVCSFVGYQLLSDGVSCEDVNECITGSHSCLRGESCINTVGSF  
 RCQRDSSCGTYELTEDNSCKDIDECESGIHNCLPDFICQNTLGSFRCR  
 PKLQCKSGFIQDALGNCIDINECLISAPCPIGHTCINTEGSYTCQKNVPNC  
 GRGYHLNEEGTRCVDVDECAPPAEPCGKGHRCVNSPGSFRCECKTGY  
 YFDGISRMCVDVNECQRYPGRLCGHKCENTLGSYLCSCSVGFRLSVDG  
 RSCEDINECSSSPCSQECANVYGSYQCYCRRGYQLSDVDGVTCEDIDE  
 CALPTGGHICSYRCINIPGSFQCSCPSSGYRLAPNGSNCQDIDECVTGIHN  
 CSINETCFNIQGGFRCLAFECPENYRRSAATRCERLPCHENRECSKPLR  
 ITYYHLSFPTNIQAPAVVFRMGPSAVPGDSMQLAITGGNEEGFFTRKV  
 SPHSGVVALTKPVPEPRDLLLTVKMDLSRHGTVSSFVAKLFIFVSAEL

**Host:** Mouse

**Reactivity:** Human

**Quality Control Testing:** Antibody reactive against mammalian transfected lysate.

**Storage Buffer:** In 1x PBS, pH 7.4

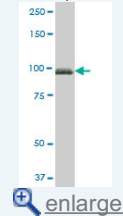
**Storage Instruction:** Store at -20°C or lower. Aliquot to avoid repeated freezing and thawing.

**MSDS:**  [Download](#)

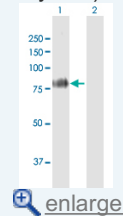
**Datasheet:**  [Download](#)

**Application Image**

Western Blot (Tissue lysate)

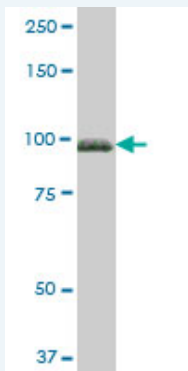


Western Blot (Transfected lysate)



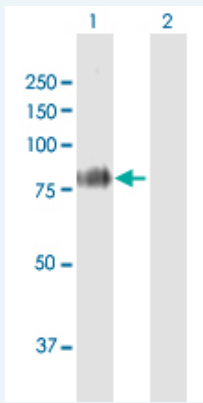
**Applications**

Western Blot (Tissue lysate)



FBLN1 MaxPab polyclonal antibody. Western Blot analysis of FBLN1 expression in human liver.

### Western Blot (Transfected lysate)



Western Blot analysis of FBLN1 expression in transfected 293T cell line ([H00002192-T01](#)) by FBLN1 MaxPab polyclonal antibody.

Lane 1: FBLN1 transfected lysate(75.13 KDa).

Lane 2: Non-transfected lysate.

### Gene Information

Entrez GeneID: [2192](#)

GeneBank [BC022497.1](#)  
Accession#:

Protein [AAH22497.1](#)  
Accession#:

Gene Name: FBLN1

Gene Alias: FBLN

Gene fibulin 1  
Description:

Omim ID: [135820, 608180](#)

Gene Ontology: [Hyperlink](#)

**Gene Summary:** Fibulin 1 is a secreted glycoprotein that becomes incorporated into a fibrillar extracellular matrix. Calcium-binding is apparently required to mediate its binding to laminin and nidogen. It mediates platelet adhesion via binding fibrinogen. Four splice variants which differ in the 3' end have been identified. Each variant encodes a different isoform, but no functional distinctions have been identified among the four variants. [provided by RefSeq]

Other [OTTHUMP00000028589](#)  
Designations:

### Related Disease

[Abortion](#), [Habitual Heart Defects](#), [Congenital Infertility](#), [Female Tobacco Use Disorder](#)