



# SZABO SCANDIC

Part of Europa Biosite

## Produktinformation



Forschungsprodukte & Biochemikalien



Zellkultur & Verbrauchsmaterial



Diagnostik & molekulare Diagnostik



Laborgeräte & Service

Weitere Information auf den folgenden Seiten!  
See the following pages for more information!



### Lieferung & Zahlungsart

siehe unsere [Liefer- und Versandbedingungen](#)

### Zuschläge

- Mindermengenzuschlag
- Trockeneiszuschlag
- Gefahrgutzuschlag
- Expressversand

### SZABO-SCANDIC HandelsgmbH

Quellenstraße 110, A-1100 Wien

T. +43(0)1 489 3961-0

F. +43(0)1 489 3961-7

[mail@szabo-scandic.com](mailto:mail@szabo-scandic.com)

[www.szabo-scandic.com](http://www.szabo-scandic.com)

[linkedin.com/company/szaboscandic](https://www.linkedin.com/company/szaboscandic) 

## FBLN1 monoclonal antibody (M03), clone 3E4

Catalog # : H00002192-M03

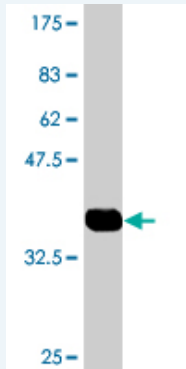
規格 : [ 100 ug ]

List All

### Specification

<b>Product Description:</b>	Mouse monoclonal antibody raised against a partial recombinant FBLN1.
<b>Immunogen:</b>	FBLN1 (AAH22497, 151 a.a. ~ 250 a.a) partial recombinant protein with GST tag. MW of the GST tag alone is 26 KDa.
<b>Sequence:</b>	GDLDVGGGLQETDKIIIEVEEQEDPYLNDRCRGGGPKQQCRDTGDEVV CSCFVGYQLLSDGVSCEDVNECITGSHSCRLGESCINTVGSFRCQRDSS CGT
<b>Host:</b>	Mouse
<b>Reactivity:</b>	Human
<b>Isotype:</b>	IgG2a Kappa

**Quality Control Testing:** Antibody Reactive Against Recombinant Protein.



Western Blot detection against Immunogen (36.74 KDa) .

**Storage Buffer:** In 1x PBS, pH 7.4

**Storage Instruction:** Store at -20°C or lower. Aliquot to avoid repeated freezing and thawing.

**MSDS:** [Download](#)

**Datasheet:** [Download](#)

### Applications

**Western Blot (Recombinant protein)**

[Protocol Download](#)

**Sandwich ELISA (Recombinant protein)**

Detection limit for recombinant GST tagged FBLN1 is approximately 10ng/ml as a capture antibody.

[Protocol Download](#)

**ELISA**

### Application Image

Western Blot (Recombinant protein)

Sandwich ELISA (Recombinant protein)

ELISA

## Gene Information

---

**Entrez GeneID:** [2192](#)

---

**GeneBank  
Accession#:** [BC022497](#)

---

**Protein  
Accession#:** [AAH22497](#)

---

**Gene Name:** FBLN1

---

**Gene Alias:** FBLN

---

**Gene  
Description:** fibulin 1

---

**Omim ID:** [135820](#), [608180](#)

---

**Gene Ontology:** [Hyperlink](#)

---

**Gene Summary:** Fibulin 1 is a secreted glycoprotein that becomes incorporated into a fibrillar extracellular matrix. Calcium-binding is apparently required to mediate its binding to laminin and nidogen. It mediates platelet adhesion via binding fibrinogen. Four splice variants which differ in the 3' end have been identified. Each variant encodes a different isoform, but no functional distinctions have been identified among the four variants. [provided by RefSeq]

---

**Other  
Designations:** OTTHUMP00000028589

---

## Related Disease

---

[Abortion](#), [Habitual Heart Defects](#), [Congenital Infertility](#), [Female Tobacco Use Disorder](#)

---

[服務條款](#) | [隱私權政策](#) | [著作及商標](#) | [網站地圖](#)

©2016 亞諾法生技股份有限公司 Abnova Corporation. 版權所有.