



SZABO SCANDIC

Part of Europa Biosite

Produktinformation



Forschungsprodukte & Biochemikalien



Zellkultur & Verbrauchsmaterial



Diagnostik & molekulare Diagnostik



Laborgeräte & Service

Weitere Information auf den folgenden Seiten!
See the following pages for more information!



Lieferung & Zahlungsart

siehe unsere [Liefer- und Versandbedingungen](#)

Zuschläge

- Mindermengenzuschlag
- Trockeneiszuschlag
- Gefahrgutzuschlag
- Expressversand

SZABO-SCANDIC HandelsgmbH

Quellenstraße 110, A-1100 Wien

T. +43(0)1 489 3961-0

F. +43(0)1 489 3961-7

mail@szabo-scandic.com

www.szabo-scandic.com

[linkedin.com/company/szaboscandic](https://www.linkedin.com/company/szaboscandic) 



FBLN2 monoclonal antibody (M05), clone 2A2

Catalog # : H00002199-M05

規格 : [100 ug]

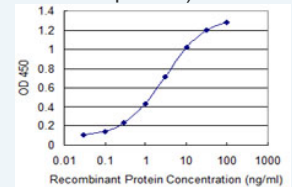
[List All](#)


Specification

Product Description:	Mouse monoclonal antibody raised against a partial recombinant FBLN2.
Immunogen:	FBLN2 (NP_001989, 1076 a.a. ~ 1184 a.a) partial recombinant protein with GST tag. MW of the GST tag alone is 26 KDa.
Sequence:	FLECQNSPARITHYQLNFQTGLLVPAHIFRIGPAPAFTGDTIALNIIKGNEE GYFGTRRLNAYTGVVYLQRAVLEPRDFALDVEMKLRQGSVTTFLAKM HIFFTTFAL
Host:	Mouse
Reactivity:	Human
Isotype:	IgG2a Kappa
Quality Control Testing:	Antibody Reactive Against Recombinant Protein.
Storage Buffer:	In 1x PBS, pH 7.4
Storage Instruction:	Store at -20°C or lower. Aliquot to avoid repeated freezing and thawing.
MSDS:	 Download
Datasheet:	 Download

Application Image

Sandwich ELISA (Recombinant protein)

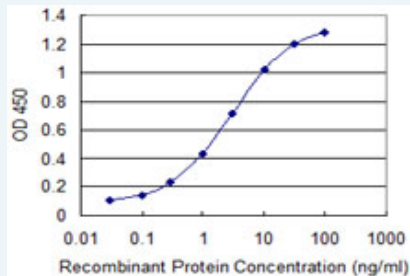


 [enlarge](#)

ELISA

Applications

Sandwich ELISA (Recombinant protein)



Detection limit for recombinant GST tagged FBLN2 is 0.03 ng/ml as a capture antibody.

 [Protocol Download](#)

ELISA

Gene Information

Entrez GeneID: [2199](#)

GeneBank Accession#: [NM_001998](#)

Protein Accession#: [NP_001989](#)

Gene Name: FBLN2

Gene Alias: -

Gene Description: fibulin 2

Omim ID: [135821](#)

Gene Ontology: [Hyperlink](#)

Gene Summary: This gene encodes an extracellular matrix protein, which belongs to the fibulin family. This protein binds various extracellular ligands and calcium. It may play a role during organ development, in particular, during the differentiation of heart, skeletal and neuronal structures. Alternatively spliced transcript variants encoding different isoforms have been identified. [provided by RefSeq]

Other Designations: -

[服務條款](#) | [隱私權政策](#) | [著作及商標](#) | [網站地圖](#)

©2016 亞諾法生技股份有限公司 Abnova Corporation. 版權所有.