



SZABO SCANDIC

Part of Europa Biosite

Produktinformation



Forschungsprodukte & Biochemikalien



Zellkultur & Verbrauchsmaterial



Diagnostik & molekulare Diagnostik



Laborgeräte & Service

Weitere Information auf den folgenden Seiten!
See the following pages for more information!



Lieferung & Zahlungsart

siehe unsere [Liefer- und Versandbedingungen](#)

Zuschläge

- Mindermengenzuschlag
- Trockeneiszuschlag
- Gefahrgutzuschlag
- Expressversand

SZABO-SCANDIC HandelsgmbH

Quellenstraße 110, A-1100 Wien

T. +43(0)1 489 3961-0

F. +43(0)1 489 3961-7

mail@szabo-scandic.com

www.szabo-scandic.com

[linkedin.com/company/szaboscandic](https://www.linkedin.com/company/szaboscandic) 

EFEMP1 purified MaxPab mouse polyclonal antibody (B01P) MaxPab®

Catalog # : H00002202-B01P

規格 : [50 ug]

[List All](#)

Specification

Product Description: Mouse polyclonal antibody raised against a full-length human EFEMP1 protein.

Immunogen: EFEMP1 (NP_004096.2, 1 a.a. ~ 493 a.a) full-length human protein.

Sequence:
 MLKALFLTMLTLALVKSQDTEETITYTQCTDGYEWDVPRQQCKDIDECD
 IVPDACKGGMKCVNHYGGYLCLPKTAQIIVNNEQPQGETQPAEGTSGAT
 TGVAASSMATSGVLPGGGFVASAAVAGPEMQTGRNNFVIRRNPADP
 QRIPSNPSHRIQCAAGYEQSEHNVCQDIDECTAGTHNCRADQVCINLRGS
 FACQCPPGYQKRGEQCVDIDECTIPPYCHQRCVNTPGSFYQCSPGFQ
 LAANNYTCVDINECDASNQCAQQCYNILGSFICQCNQGYELSSDRLNCD
 IDECRTSSYLQYQCVNEPGKFSMCPQGYQVRSRTCQDINECETT
 ECREDEMWNHYHGGFRCYPRNPCQDPYILTPEINRCVCPVSNAMCRELP
 QSIVYKYSIRSRSVPSDIFQIQATTIYANTINTFRIKSGNENGEFYLRQTS
 PVSAMLVLVKLSLSPREHIVDLEMLTVSSIGTFRTSSVLRLTIIVGPFSS

Host: Mouse

Reactivity: Human

Quality Control Testing: Antibody reactive against mammalian transfected lysate.

Storage Buffer: In 1x PBS, pH 7.4

Storage Instruction: Store at -20°C or lower. Aliquot to avoid repeated freezing and thawing.

MSDS: [Download](#)

Datasheet: [Download](#)

Publication Reference

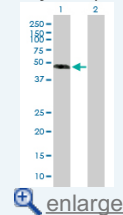
1. [Identification of hepatic microvascular adhesion-related genes of human colon cancer cells using random homozygous gene perturbation.](#)
 Marquez J, Kohli M, Arteta B, Chang S, Li WB, Goldblatt M, Vidal-Vanaclocha F Int J Cancer. 2013 Apr 30. doi: 10.1002/ijc.28232.

Applications

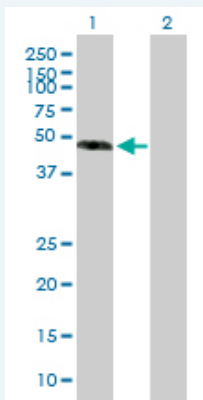
Western Blot (Transfected lysate)

Application Image

Western Blot (Transfected lysate)



[enlarge](#)



Western Blot analysis of EFEMP1 expression in transfected 293T cell line ([H00002202-T02](#)) by EFEMP1 MaxPab polyclonal antibody.

Lane 1: EFEMP1 transfected lysate(54.23 KDa).
Lane 2: Non-transfected lysate.

 [Protocol Download](#)

Gene Information

Entrez GeneID: [2202](#)

GeneBank Accession#: [NM_004105.3](#)

Protein Accession#: [NP_004096.2](#)

Gene Name: EFEMP1

Gene Alias: DHRD, DRAD, FBLN3, FBNL, FLJ35535, MGC111353, MLVT, MTLV, S1-5

Gene Description: EGF-containing fibulin-like extracellular matrix protein 1

Omim ID: [126600](#), [601548](#)

Gene Ontology: [Hyperlink](#)

Gene Summary: This gene spans approximately 18 kb of genomic DNA and consists of 12 exons. Alternative splice patterns in the 5' UTR result in three transcript variants encoding the same extracellular matrix protein. Mutations in this gene are associated with Doyme honeycomb retinal dystrophy. [provided by RefSeq]

Other Designations: fibrillin-like, fibulin 3

Related Disease

[Atherosclerosis](#) [Calcinosis](#) [Coronary Artery Disease](#) [Crohn Disease](#)
[Diabetes Mellitus, Type 2](#) [Genetic Predisposition to Disease](#) [Growth Disorders](#)
[Macular Degeneration](#) [Retinal Degeneration](#) [Retinal Diseases](#) [Retinal Drusen](#)
[Tobacco Use Disorder](#)