



SZABO SCANDIC

Part of Europa Biosite

Produktinformation



Forschungsprodukte & Biochemikalien



Zellkultur & Verbrauchsmaterial



Diagnostik & molekulare Diagnostik



Laborgeräte & Service

Weitere Information auf den folgenden Seiten!
See the following pages for more information!



Lieferung & Zahlungsart

siehe unsere [Liefer- und Versandbedingungen](#)

Zuschläge

- Mindermengenzuschlag
- Trockeneiszuschlag
- Gefahrgutzuschlag
- Expressversand

SZABO-SCANDIC HandelsgmbH

Quellenstraße 110, A-1100 Wien

T. +43(0)1 489 3961-0

F. +43(0)1 489 3961-7

mail@szabo-scandic.com

www.szabo-scandic.com

[linkedin.com/company/szaboscandic](https://www.linkedin.com/company/szaboscandic) 

EFEMP1 293T Cell Transient Overexpression Lysate(Denatured)

Catalog # : H00002202-T02

規格 : [100 uL]

[List All](#)

Specification

Transfected Cell Line: 293T

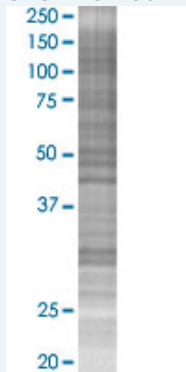
Plasmid: pCMV-EFEMP1 full-length

Host: Human

Theoretical MW (kDa): 54.6

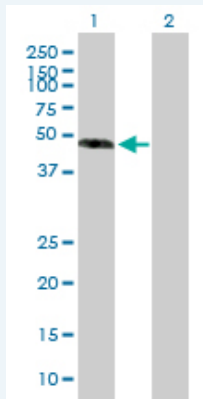
Quality Control Testing: Transient overexpression cell lysate was tested with Anti-EFEMP1 antibody (H00002202-B01P) by Western Blots.

SDS-PAGE Gel



EFEMP1 transfected lysate.

Western Blot



Lane 1: EFEMP1 transfected lysate (54.60 KDa)

Lane 2: Non-transfected lysate.

Storage Buffer: 1X Sample Buffer (50 mM Tris-HCl, 2% SDS, 10% glycerol, 300 mM 2-mercaptoethanol, 0.01% Bromophenol blue)

Storage Instruction: Store at -80°C. Aliquot to avoid repeated freezing and thawing.

MSDS:  [Download](#)

Applications

Western Blot

Gene Information

Entrez GeneID: [2202](#)

GeneBank Accession#: [NM_004105.3](#)

Protein Accession#: [NP_004096.2](#)

Gene Name: EFEMP1

Gene Alias: DHRD, DRAD, FBLN3, FBNL, FLJ35535, MGC111353, MLVT, MTLV, S1-5

Gene Description: EGF-containing fibulin-like extracellular matrix protein 1

Omim ID: [126600](#), [601548](#)

Gene Ontology: [Hyperlink](#)

Gene Summary: This gene spans approximately 18 kb of genomic DNA and consists of 12 exons. Alternative splice patterns in the 5' UTR result in three transcript variants encoding the same extracellular matrix protein. Mutations in this gene are associated with Doyme honeycomb retinal dystrophy. [provided by RefSeq]

Other Designations: fibrillin-like, fibulin 3

Related Disease

[Atherosclerosis](#) [Calcinosis](#) [Coronary Artery Disease](#) [Crohn Disease](#)
[Diabetes Mellitus, Type 2](#) [Genetic Predisposition to Disease](#) [Growth Disorders](#)
[Macular Degeneration](#) [Retinal Degeneration](#) [Retinal Diseases](#) [Retinal Drusen](#)
[Tobacco Use Disorder](#)

[服務條款](#) | [隱私權政策](#) | [著作及商標](#) | [網站地圖](#)

©2016 亞諾法生技股份有限公司 Abnova Corporation. 版權所有.