



# SZABO SCANDIC

Part of Europa Biosite

## Produktinformation



Forschungsprodukte & Biochemikalien



Zellkultur & Verbrauchsmaterial



Diagnostik & molekulare Diagnostik



Laborgeräte & Service

Weitere Information auf den folgenden Seiten!  
See the following pages for more information!



### Lieferung & Zahlungsart

siehe unsere [Liefer- und Versandbedingungen](#)

### Zuschläge

- Mindermengenzuschlag
- Trockeneiszuschlag
- Gefahrgutzuschlag
- Expressversand

### SZABO-SCANDIC HandelsgmbH

Quellenstraße 110, A-1100 Wien

T. +43(0)1 489 3961-0

F. +43(0)1 489 3961-7

[mail@szabo-scandic.com](mailto:mail@szabo-scandic.com)

[www.szabo-scandic.com](http://www.szabo-scandic.com)

[linkedin.com/company/szaboscandic](https://www.linkedin.com/company/szaboscandic) 

## FCER1A polyclonal antibody (A01)

Catalog # : H00002205-A01

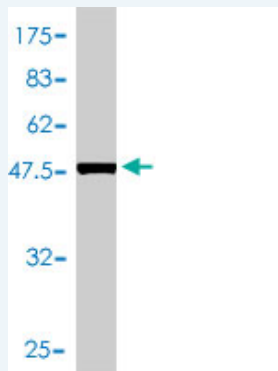
規格 : [ 50 uL ]

List All

### Specification

<b>Product Description:</b>	Mouse polyclonal antibody raised against a full-length recombinant FCER1A.
<b>Immunogen:</b>	FCER1A (AAH05912.1, 1 a.a. ~ 257 a.a) full-length recombinant protein with GST tag.
<b>Sequence:</b>	MAPAMESPTLLCVALLFFAPDGVLAVPQKPKVSLNPPWNRIFKGENVTL TCNGNFFFEVSSTKWFHNGSLSEETNSSLNIVNAKFEDSGEYKCQHQQV NESEPVYLEVFSDWLLQASAEVMEGQPLFLRCHGWRNWDVYKVIYY KDGEALKYWYENHNISITNATVEDSGTYCYCTGKVVQLDYESEPLNITVIKA PREKYWLQFFIPLLVLVILFAVDGLFISTQQQVTFLLKIKRTRKGFRLNLP HPKPNPKNN
<b>Host:</b>	Mouse
<b>Reactivity:</b>	Human

**Quality Control Testing:** Antibody Reactive Against Recombinant Protein.



Western Blot detection against Immunogen (54.38 KDa) .

**Storage Buffer:** 50 % glycerol

**Storage Instruction:** Store at -20°C or lower. Aliquot to avoid repeated freezing and thawing.

**MSDS:** [Download](#)

**Datasheet:** [Download](#)

### Applications

**Western Blot (Recombinant protein)**

[Protocol Download](#)

**ELISA**

### Gene Information

**Entrez GeneID:** [2205](#)

### Application Image

Western Blot (Recombinant protein)

ELISA

**GeneBank  
Accession#:** [BC005912](#)

**Protein  
Accession#:** [AAH05912.1](#)

**Gene Name:** FCER1A

**Gene Alias:** FCE1A,FcERI

**Gene  
Description:** Fc fragment of IgE, high affinity I, receptor for; alpha polypeptide

**Omim ID:** [147140](#)

**Gene Ontology:** [Hyperlink](#)

**Gene Summary:** The IgE receptor plays a central role in allergic disease, coupling allergen and mast cell to initiate the inflammatory and immediate hypersensitivity responses that are characteristic of disorders such as hay fever and asthma. The allergic response occurs when 2 or more high-affinity IgE receptors are crosslinked via IgE molecules that in turn are bound to an allergen (antigen) molecule. A perturbation occurs that brings about the release of histamine and proteases from the granules in the cytoplasm of the mast cell and leads to the synthesis of prostaglandins and leukotrienes--potent effectors of the hypersensitivity response. The IgE receptor consists of 3 subunits: alpha, beta (MIM 147138), and gamma (MIM 147139); only the alpha subunit is glycosylated.[supplied by OMIM]

**Other  
Designations:** Fc IgE receptor, alpha polypeptide,Fc epsilon RI alpha-chain,Fc-epsilon RI-alpha,high affinity immunoglobulin epsilon receptor alpha-subunit,immunoglobulin E receptor, high-affinity, of mast cells, alpha polypeptide

### Gene Pathway

[Asthma Fc epsilon RI signaling pathway](#)

### Related Disease

[Asthma](#) [Asthma Birth Weight](#) [Breast cancer](#) [Breast Neoplasms](#) [Bronchiolitis](#) [Viral Cardiovascular Diseases](#) [Chronic Disease](#) [Coronary Artery Disease](#) [Dermatitis](#) [Atopic Drug Hypersensitivity](#) [Eczema](#) [Genetic Predisposition to Disease](#) [Glioblastoma](#) [Glioma](#) [Glomerulonephritis](#) [Glomerulonephritis, IGA Hypersensitivity](#) [Hypersensitivity](#) [Immediate](#)

... see more