



# SZABO SCANDIC

Part of Europa Biosite

## Produktinformation



Forschungsprodukte & Biochemikalien



Zellkultur & Verbrauchsmaterial



Diagnostik & molekulare Diagnostik



Laborgeräte & Service

Weitere Information auf den folgenden Seiten!  
See the following pages for more information!



### Lieferung & Zahlungsart

siehe unsere [Liefer- und Versandbedingungen](#)

### Zuschläge

- Mindermengenzuschlag
- Trockeneiszuschlag
- Gefahrgutzuschlag
- Expressversand

### SZABO-SCANDIC HandelsgmbH

Quellenstraße 110, A-1100 Wien

T. +43(0)1 489 3961-0

F. +43(0)1 489 3961-7

[mail@szabo-scandic.com](mailto:mail@szabo-scandic.com)

[www.szabo-scandic.com](http://www.szabo-scandic.com)

[linkedin.com/company/szaboscandic](https://www.linkedin.com/company/szaboscandic) 

## FCER1A (Human) Matched Antibody Pair

Catalog # : H00002205-AP11

規格 : [ 1 Set ]

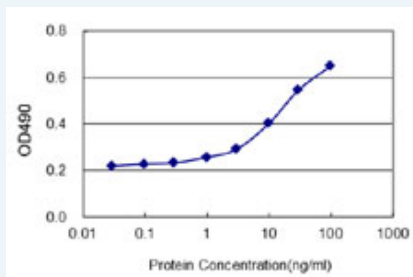
[List All](#)

### Specification

**Product Description:** This antibody pair set comes with matched antibody pair to detect and quantify protein level of human FCER1A.

**Reactivity:** Human

**Quality Control Testing:** Standard curve using recombinant protein ( H00002205-P01 ) as an analyte.



Sandwich ELISA detection sensitivity ranging from 3 ng/ml to 100 ng/ml.

**Supplied Product:** Antibody pair set content:  
 1. Capture antibody: rabbit MaxPab® affinity purified polyclonal anti-FCER1A (100 ug)  
 2. Detection antibody: mouse monoclonal anti-FCER1A, IgG1 Kappa (20 ug)  
 \*Reagents are sufficient for at least 1-2 x 96 well plates using recommended protocols.

**Storage Instruction:** Store reagents of the antibody pair set at -20°C or lower. Please aliquot to avoid repeated freeze thaw cycle. Reagents should be returned to -20°C storage immediately after use.

### Applications

ELISA Pair (Recombinant protein)

 [Protocol Download](#)

### Gene Information

**Entrez GeneID:** [2205](#)

**Gene Name:** FCER1A

**Gene Alias:** FCE1A, FcERI

**Gene Description:** Fc fragment of IgE, high affinity I, receptor for; alpha polypeptide

**Omim ID:** [147140](#)

**Gene Ontology:** [Hyperlink](#)

**Gene Summary:** The IgE receptor plays a central role in allergic disease, coupling allergen and mast cell to initiate the inflammatory and immediate

hypersensitivity responses that are characteristic of disorders such as hay fever and asthma. The allergic response occurs when 2 or more high-affinity IgE receptors are crosslinked via IgE molecules that in turn are bound to an allergen (antigen) molecule. A perturbation occurs that brings about the release of histamine and proteases from the granules in the cytoplasm of the mast cell and leads to the synthesis of prostaglandins and leukotrienes--potent effectors of the hypersensitivity response. The IgE receptor consists of 3 subunits: alpha, beta (MIM 147138), and gamma (MIM 147139); only the alpha subunit is glycosylated.[supplied by OMIM

**Other Designations:** Fc IgE receptor, alpha polypeptide, Fc epsilon RI alpha-chain, Fc-epsilon RI-alpha, high affinity immunoglobulin epsilon receptor alpha-subunit, immunoglobulin E receptor, high-affinity, of mast cells, alpha polypeptide

### Gene Pathway

[Asthma Fc epsilon RI signaling pathway](#)

### Related Disease

[Asthma](#) [Asthma Birth Weight](#) [Breast cancer](#) [Breast Neoplasms](#) [Bronchiolitis, Viral](#) [Cardiovascular Diseases](#) [Chronic Disease](#) [Coronary Artery Disease](#) [Dermatitis, Atopic](#) [Drug Hypersensitivity](#) [Eczema](#) [Genetic Predisposition to Disease](#) [Glioblastoma](#) [Glioma](#) [Glomerulonephritis](#) [Glomerulonephritis, IGA](#) [Hypersensitivity](#) [Hypersensitivity, Immediate](#)

... see more

[服務條款](#) | [隱私權政策](#) | [著作及商標](#) | [網站地圖](#)

©2016 亞諾法生技股份有限公司 Abnova Corporation. 版權所有.