



SZABO SCANDIC

Part of Europa Biosite

Produktinformation



Forschungsprodukte & Biochemikalien



Zellkultur & Verbrauchsmaterial



Diagnostik & molekulare Diagnostik



Laborgeräte & Service

Weitere Information auf den folgenden Seiten!
See the following pages for more information!



Lieferung & Zahlungsart

siehe unsere [Liefer- und Versandbedingungen](#)

Zuschläge

- Mindermengenzuschlag
- Trockeneiszuschlag
- Gefahrgutzuschlag
- Expressversand

SZABO-SCANDIC HandelsgmbH

Quellenstraße 110, A-1100 Wien

T. +43(0)1 489 3961-0

F. +43(0)1 489 3961-7

mail@szabo-scandic.com

www.szabo-scandic.com

[linkedin.com/company/szaboscandic](https://www.linkedin.com/company/szaboscandic) 

FCER1A purified MaxPab rabbit polyclonal antibody (D01P) MaxPab®

Catalog # : H00002205-D01P

規格 : [100 ug]

[List All](#)

Specification

Product Description: Rabbit polyclonal antibody raised against a full-length human FCER1A protein.

Immunogen: FCER1A (NP_001992.1, 1 a.a. ~ 257 a.a) full-length human protein.

Sequence:
 MAPAMESPTLLCVALLFFAPDGVLAVPQKPKVSLNPPWNRIFKGENVTL
 TCNGNFFFEVSSTKWFHNGSLSEETNSSLNIVNAKFEDSGEYKCQHQQV
 NESEPVYLEVFSDWLLQASAEVMEGQPLFLRCHGWRNWDVYKVIYY
 KDGEALKYWYENHNISITNATVEDSGTYCTGKWWQLDYESEPLNITVIKA
 PREKYWLQFFIPLLWILFAVDTGLFISTQQQVTFLLKIKRTRKGFRLNLP
 HPKPNPKNN

Host: Rabbit

Reactivity: Human

Quality Control Testing: Antibody reactive against mammalian transfected lysate.

Storage Buffer: In 1x PBS, pH 7.4

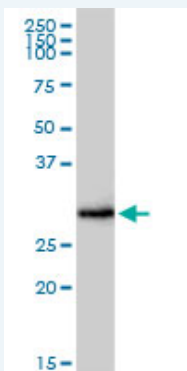
Storage Instruction: Store at -20°C or lower. Aliquot to avoid repeated freezing and thawing.

MSDS:  [Download](#)

Datasheet:  [Download](#)

Applications

Western Blot (Tissue lysate)



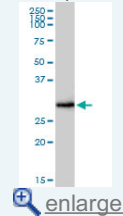
FCER1A MaxPab rabbit polyclonal antibody. Western Blot analysis of FCER1A expression in human kidney.

 [Protocol Download](#)

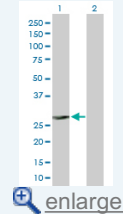
Western Blot (Transfected lysate)

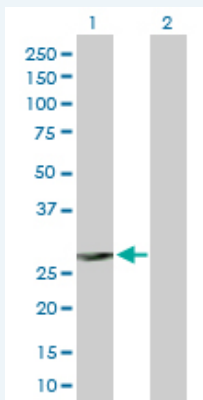
Application Image

Western Blot (Tissue lysate)



Western Blot (Transfected lysate)





Western Blot analysis of FCER1A expression in transfected 293T cell line ([H00002205-T02](#)) by FCER1A MaxPab polyclonal antibody.

Lane 1: FCER1A transfected lysate(29.60 KDa).
Lane 2: Non-transfected lysate.

 [Protocol Download](#)

Gene Information

Entrez GeneID: [2205](#)

GeneBank Accession#: [NM_002001.2](#)

Protein Accession#: [NP_001992.1](#)

Gene Name: FCER1A

Gene Alias: FCE1A,FcERI

Gene Description: Fc fragment of IgE, high affinity I, receptor for; alpha polypeptide

Omim ID: [147140](#)

Gene Ontology: [Hyperlink](#)

Gene Summary: The IgE receptor plays a central role in allergic disease, coupling allergen and mast cell to initiate the inflammatory and immediate hypersensitivity responses that are characteristic of disorders such as hay fever and asthma. The allergic response occurs when 2 or more high-affinity IgE receptors are crosslinked via IgE molecules that in turn are bound to an allergen (antigen) molecule. A perturbation occurs that brings about the release of histamine and proteases from the granules in the cytoplasm of the mast cell and leads to the synthesis of prostaglandins and leukotrienes--potent effectors of the hypersensitivity response. The IgE receptor consists of 3 subunits: alpha, beta (MIM 147138), and gamma (MIM 147139); only the alpha subunit is glycosylated.[supplied by OMIM]

Other Designations: Fc IgE receptor, alpha polypeptide,Fc epsilon RI alpha-chain,Fc-epsilon RI-alpha,high affinity immunoglobulin epsilon receptor alpha-subunit,immunoglobulin E receptor, high-affinity, of mast cells, alpha polypeptide

Gene Pathway

[Asthma Fc epsilon RI signaling pathway](#)

Related Disease

[Asthma](#) [Asthma Birth Weight](#) [Breast cancer](#) [Breast Neoplasms](#) [Bronchiolitis, Viral](#) [Cardiovascular Diseases](#) [Chronic Disease](#) [Coronary Artery Disease](#) [Dermatitis, Atopic](#)

[Drug Hypersensitivity](#) [Eczema](#) [Genetic Predisposition to Disease](#) [Glioblastoma](#) [Glioma](#)
[Glomerulonephritis](#) [Glomerulonephritis, IGA](#) [Hypersensitivity](#) [Hypersensitivity, Immediate](#)

[... see more](#)

[服務條款](#) | [隱私權政策](#) | [著作及商標](#) | [網站地圖](#)

©2016 亞諾法生技股份有限公司 Abnova Corporation. 版權所有.