



SZABO SCANDIC

Part of Europa Biosite

Produktinformation



Forschungsprodukte & Biochemikalien



Zellkultur & Verbrauchsmaterial



Diagnostik & molekulare Diagnostik



Laborgeräte & Service

Weitere Information auf den folgenden Seiten!
See the following pages for more information!



Lieferung & Zahlungsart

siehe unsere [Liefer- und Versandbedingungen](#)

Zuschläge

- Mindermengenzuschlag
- Trockeneiszuschlag
- Gefahrgutzuschlag
- Expressversand

SZABO-SCANDIC HandelsgmbH

Quellenstraße 110, A-1100 Wien

T. +43(0)1 489 3961-0

F. +43(0)1 489 3961-7

mail@szabo-scandic.com

www.szabo-scandic.com

[linkedin.com/company/szaboscandic](https://www.linkedin.com/company/szaboscandic) 

FCER1A monoclonal antibody (M01), clone 2C12-3B6

Catalog # : H00002205-M01

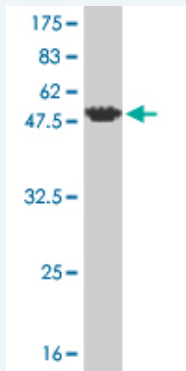
規格 : [100 ug]

[List All](#)

Specification

Product Description:	Mouse monoclonal antibody raised against a full length recombinant FCER1A.
Immunogen:	FCER1A (AAH05912.1, 1 a.a. ~ 257 a.a) full-length recombinant protein with GST tag. MW of the GST tag alone is 26 KDa.
Sequence:	MAPAMESPTLLCVALLFFAPDGVLAVPQKPKVSLNPPWNRIFKGENVTL TCNGNFFFEVSSTKWFHNGSLSEETNSSLNIVNAKFEDSGEYKCQHQQV NESEPYYLEVFSDWLLQASAEVMEGQPLFLRCHGWRNWDVYKVIYY KDGEALKYWYENHNISITNATVEDSGTYCTGKVVQLDYESEPLNITVIKA PREKYWLQFFIPLLWILFAVDTGLFISTQQQVTFLLKIKRTRKGFRLNLP HPKPNPKNN
Host:	Mouse
Reactivity:	Human
Isotype:	IgG1 Kappa

Quality Control Testing: Antibody Reactive Against Recombinant Protein.



Western Blot detection against Immunogen (54.01 KDa) .

Storage Buffer: In 1x PBS, pH 7.4

Storage Instruction: Store at -20°C or lower. Aliquot to avoid repeated freezing and thawing.

MSDS: [Download](#)

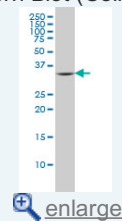
Datasheet: [Download](#)

Applications

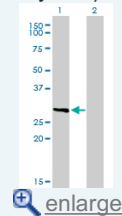
Western Blot (Cell lysate)

Application Image

Western Blot (Cell lysate)

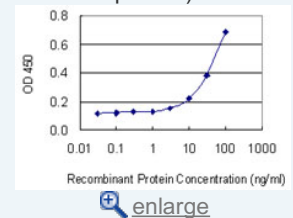


Western Blot (Transfected lysate)



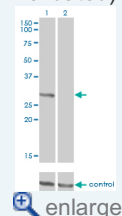
Western Blot (Recombinant protein)

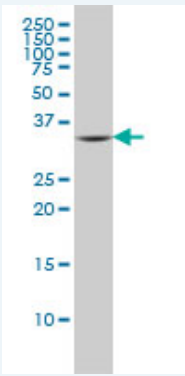
Sandwich ELISA (Recombinant protein)



ELISA

RNAi Knockdown (Antibody validated)

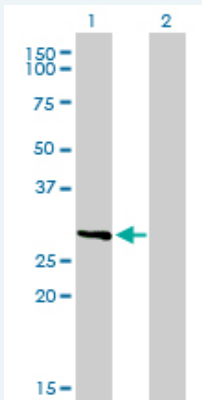




FCER1A monoclonal antibody (M01), clone 2C12-3B6 Western Blot analysis of FCER1A expression in A-549 (Cat # L025V1).

[Protocol Download](#)

Western Blot (Transfected lysate)



Western Blot analysis of FCER1A expression in transfected 293T cell line by FCER1A monoclonal antibody (M01), clone 2C12-3B6.

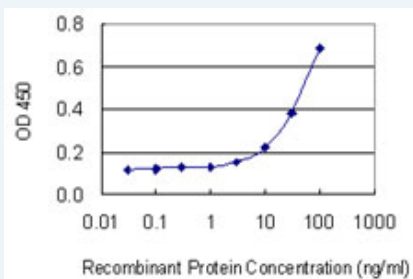
Lane 1: FCER1A transfected lysate(29.6 KDa).
Lane 2: Non-transfected lysate.

[Protocol Download](#)

Western Blot (Recombinant protein)

[Protocol Download](#)

Sandwich ELISA (Recombinant protein)

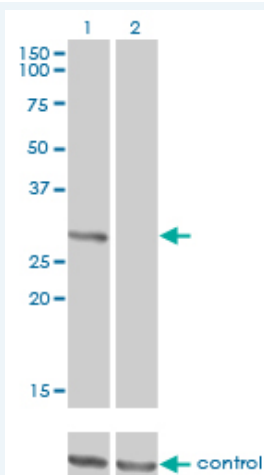


Detection limit for recombinant GST tagged FCER1A is 1 ng/ml as a capture antibody.

[Protocol Download](#)

ELISA

RNAi Knockdown (Antibody validated)



Western blot analysis of FCER1A over-expressed 293 cell line, cotransfected with FCER1A Validated Chimera RNAi (Cat # H00002205-R01V) (Lane 2) or non-transfected control (Lane 1). Blot probed with FCER1A monoclonal antibody (M01), clone 2C12-3B6 (Cat # H00002205-M01). GAPDH (36.1 kDa) used as specificity and loading control.

 [Protocol Download](#)

Gene Information

Entrez GeneID: [2205](#)

GeneBank [BC005912](#)

Accession#:

Protein [AAH05912.1](#)

Accession#:

Gene Name: FCER1A

Gene Alias: FCE1A,FcERI

Gene Description: Fc fragment of IgE, high affinity I, receptor for; alpha polypeptide

Omim ID: [147140](#)

Gene Ontology: [Hyperlink](#)

Gene Summary: The IgE receptor plays a central role in allergic disease, coupling allergen and mast cell to initiate the inflammatory and immediate hypersensitivity responses that are characteristic of disorders such as hay fever and asthma. The allergic response occurs when 2 or more high-affinity IgE receptors are crosslinked via IgE molecules that in turn are bound to an allergen (antigen) molecule. A perturbation occurs that brings about the release of histamine and proteases from the granules in the cytoplasm of the mast cell and leads to the synthesis of prostaglandins and leukotrienes--potent effectors of the hypersensitivity response. The IgE receptor consists of 3 subunits: alpha, beta (MIM 147138), and gamma (MIM 147139); only the alpha subunit is glycosylated.[supplied by OMIM

Other Designations: Fc IgE receptor, alpha polypeptide,Fc epsilon RI alpha-chain,Fc-epsilon RI-alpha,high affinity immunoglobulin epsilon receptor alpha-subunit,immunoglobulin E receptor, high-affinity, of mast cells, alpha polypeptide

Gene Pathway

[Asthma Fc epsilon RI signaling pathway](#)

Related Disease

[Asthma](#) [Asthma](#) [Birth Weight](#) [Breast cancer](#) [Breast Neoplasms](#) [Bronchiolitis](#) [Viral Cardiovascular Diseases](#) [Chronic Disease](#) [Coronary Artery Disease](#) [Dermatitis](#) [Atopic Drug Hypersensitivity](#) [Eczema](#) [Genetic Predisposition to Disease](#) [Glioblastoma](#) [Glioma](#) [Glomerulonephritis](#) [Glomerulonephritis, IGA](#) [Hypersensitivity](#) [Hypersensitivity, Immediate](#)

... see more

[服務條款](#) | [隱私權政策](#) | [著作及商標](#) | [網站地圖](#)

©2016 亞諾法生技股份有限公司 Abnova Corporation. 版權所有.