



# SZABO SCANDIC

Part of Europa Biosite

## Produktinformation



Forschungsprodukte & Biochemikalien



Zellkultur & Verbrauchsmaterial



Diagnostik & molekulare Diagnostik



Laborgeräte & Service

Weitere Information auf den folgenden Seiten!  
See the following pages for more information!



### Lieferung & Zahlungsart

siehe unsere [Liefer- und Versandbedingungen](#)

### Zuschläge

- Mindermengenzuschlag
- Trockeneiszuschlag
- Gefahrgutzuschlag
- Expressversand

### SZABO-SCANDIC HandelsgmbH

Quellenstraße 110, A-1100 Wien

T. +43(0)1 489 3961-0

F. +43(0)1 489 3961-7

[mail@szabo-scandic.com](mailto:mail@szabo-scandic.com)

[www.szabo-scandic.com](http://www.szabo-scandic.com)

[linkedin.com/company/szaboscandic](https://www.linkedin.com/company/szaboscandic) 

## FCER1A 293T Cell Transient Overexpression Lysate(Denatured)

Catalog # : H00002205-T02

規格 : [ 100 uL ]

List All

### Specification

**Transfected Cell Line:** 293T

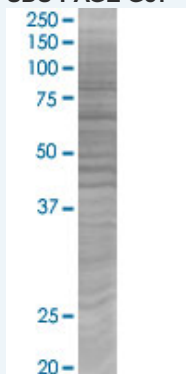
**Plasmid:** pCMV-FCER1A full-length

**Host:** Human

**Theoretical MW (kDa):** 29.6

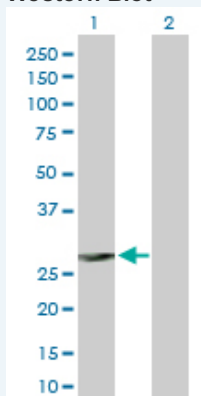
**Quality Control Testing:** Transient overexpression cell lysate was tested with Anti-FCER1A antibody ([H00002205-D01P](#)) by Western Blots.

#### SDS-PAGE Gel



FCER1A transfected lysate.

#### Western Blot



Lane 1: FCER1A transfected lysate ( 29.60 KDa)

Lane 2: Non-transfected lysate.

**Storage Buffer:** 1X Sample Buffer (50 mM Tris-HCl, 2% SDS, 10% glycerol, 300 mM 2-mercaptoethanol, 0.01% Bromophenol blue)

**Storage Instruction:** Store at -80°C. Aliquot to avoid repeated freezing and thawing.

**MSDS:**  [Download](#)

### Applications

## Western Blot

### Gene Information

Entrez GeneID: [2205](#)

GeneBank [NM\\_002001.2](#)  
Accession#:

Protein [NP\\_001992.1](#)  
Accession#:

Gene Name: FCER1A

Gene Alias: FCE1A,FcERI

Gene Description: Fc fragment of IgE, high affinity I, receptor for; alpha polypeptide

Omim ID: [147140](#)

Gene Ontology: [Hyperlink](#)

**Gene Summary:** The IgE receptor plays a central role in allergic disease, coupling allergen and mast cell to initiate the inflammatory and immediate hypersensitivity responses that are characteristic of disorders such as hay fever and asthma. The allergic response occurs when 2 or more high-affinity IgE receptors are crosslinked via IgE molecules that in turn are bound to an allergen (antigen) molecule. A perturbation occurs that brings about the release of histamine and proteases from the granules in the cytoplasm of the mast cell and leads to the synthesis of prostaglandins and leukotrienes--potent effectors of the hypersensitivity response. The IgE receptor consists of 3 subunits: alpha, beta (MIM 147138), and gamma (MIM 147139); only the alpha subunit is glycosylated.[supplied by OMIM

**Other Designations:** Fc IgE receptor, alpha polypeptide,Fc epsilon RI alpha-chain,Fc-epsilon RI-alpha,high affinity immunoglobulin epsilon receptor alpha-subunit,immunoglobulin E receptor, high-affinity, of mast cells, alpha polypeptide

### Gene Pathway

[Asthma Fc epsilon RI signaling pathway](#)

### Related Disease

[Asthma](#) [Asthma Birth Weight](#) [Breast cancer](#) [Breast Neoplasms](#) [Bronchiolitis, Viral](#) [Cardiovascular Diseases](#) [Chronic Disease](#) [Coronary Artery Disease](#) [Dermatitis, Atopic](#) [Drug Hypersensitivity](#) [Eczema](#) [Genetic Predisposition to Disease](#) [Glioblastoma](#) [Glioma](#) [Glomerulonephritis](#) [Glomerulonephritis, IGA](#) [Hypersensitivity](#) [Hypersensitivity, Immediate](#)

... see more