



# SZABO SCANDIC

Part of Europa Biosite

## Produktinformation



Forschungsprodukte & Biochemikalien



Zellkultur & Verbrauchsmaterial



Diagnostik & molekulare Diagnostik



Laborgeräte & Service

Weitere Information auf den folgenden Seiten!  
See the following pages for more information!



### Lieferung & Zahlungsart

siehe unsere [Liefer- und Versandbedingungen](#)

### Zuschläge

- Mindermengenzuschlag
- Trockeneiszuschlag
- Gefahrgutzuschlag
- Expressversand

### SZABO-SCANDIC HandelsgmbH

Quellenstraße 110, A-1100 Wien

T. +43(0)1 489 3961-0

F. +43(0)1 489 3961-7

[mail@szabo-scandic.com](mailto:mail@szabo-scandic.com)

[www.szabo-scandic.com](http://www.szabo-scandic.com)

[linkedin.com/company/szaboscandic](https://www.linkedin.com/company/szaboscandic) 

## MS4A2 polyclonal antibody (A01)

Catalog # : H00002206-A01

規格 : [ 50 uL ]

List All

### Specification

**Product Description:** Mouse polyclonal antibody raised against a partial recombinant MS4A2.

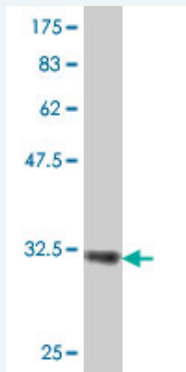
**Immunogen:** MS4A2 (NP\_000130, 1 a.a. ~ 59 a.a) partial recombinant protein with GST tag.

**Sequence:** MDTESNRRANLALPQEPSSVPAFEVLEISPQEVSSGRLLKSASSPPLHT  
WLTVLKKEQE

**Host:** Mouse

**Reactivity:** Human

**Quality Control Testing:** Antibody Reactive Against Recombinant Protein.



Western Blot detection against Immunogen (32.6 KDa) .

**Storage Buffer:** 50 % glycerol

**Storage Instruction:** Store at -20°C or lower. Aliquot to avoid repeated freezing and thawing.

**MSDS:** [Download](#)

**Datasheet:** [Download](#)

### Applications

**Western Blot (Recombinant protein)**

[Protocol Download](#)

**ELISA**

### Gene Information

**Entrez GeneID:** [2206](#)

**GeneBank Accession#:** [NM\\_000139](#)

### Application Image

Western Blot (Recombinant protein)

ELISA

**Protein** [NP\\_000130](#)

**Accession#:**

**Gene Name:** MS4A2

**Gene Alias:** APY, ATOPY, FCER1B, FCERI, IGEL, IGER, IGHF, MS4A1

**Gene Description:** membrane-spanning 4-domains, subfamily A, member 2 (Fc fragment of IgE, high affinity I, receptor for; beta polypeptide)

**Omim ID:** [147050](#), [147138](#)

**Gene Ontology:** [Hyperlink](#)

**Gene Summary:** The allergic response involves the binding of allergen to receptor-bound IgE followed by cell activation and the release of mediators responsible for the manifestations of allergy. The IgE-receptor, a tetramer composed of an alpha, beta, and 2 disulfide-linked gamma chains, is found on the surface of mast cells and basophils. This gene encodes the beta subunit of the high affinity IgE receptor which is a member of the membrane-spanning 4A gene family. Members of this nascent protein family are characterized by common structural features and similar intron/exon splice boundaries and display unique expression patterns among hematopoietic cells and nonlymphoid tissues. This family member is localized to 11q12, among a cluster of family members. Alternative splicing results in multiple transcript variants encoding different isoforms

**Other Designations:** Fc IgE receptor, beta chain, Fc epsilon receptor I beta-chain, Fc-epsilon receptor I beta-chain, High affinity immunoglobulin epsilon receptor beta-subunit (FcERI) (IgE Fc receptor, beta-subunit) (Fc epsilon receptor I beta-chain), IgE responsiveness (atopic)

### Gene Pathway

[Asthma Fc epsilon RI signaling pathway](#)

### Related Disease

[Angioneurotic Edema](#) [Asthma](#) [Asthma](#) [Atherosclerosis](#) [Atherosclerosis](#) [Brain Ischemia](#) [Bronchial Hyperreactivity](#) [Bronchiolitis, Viral](#) [Calcinosis](#) [Cardiovascular Diseases](#) [Cerebrovascular Disorders](#) [Chlamydia Infections](#) [Chronic Disease](#) [Constriction, Pathologic](#) [Coronary Artery Disease](#) [Coronary Disease](#) [Dermatitis, Atopic](#) [Diabetes Mellitus, Type 1](#) [Diabetes Mellitus, Type 2](#)

... see more

[服務條款](#) | [隱私權政策](#) | [著作及商標](#) | [網站地圖](#)

©2016 亞諾法生技股份有限公司 Abnova Corporation. 版權所有.