



SZABO SCANDIC

Part of Europa Biosite

Produktinformation



Forschungsprodukte & Biochemikalien



Zellkultur & Verbrauchsmaterial



Diagnostik & molekulare Diagnostik



Laborgeräte & Service

Weitere Information auf den folgenden Seiten!
See the following pages for more information!



Lieferung & Zahlungsart

siehe unsere [Liefer- und Versandbedingungen](#)

Zuschläge

- Mindermengenzuschlag
- Trockeneiszuschlag
- Gefahrgutzuschlag
- Expressversand

SZABO-SCANDIC HandelsgmbH

Quellenstraße 110, A-1100 Wien

T. +43(0)1 489 3961-0

F. +43(0)1 489 3961-7

mail@szabo-scandic.com

www.szabo-scandic.com

[linkedin.com/company/szaboscandic](https://www.linkedin.com/company/szaboscandic) 

FCER2 (Human) Matched Antibody Pair

Catalog # : H00002208-AP22

規格 : [1 Set]

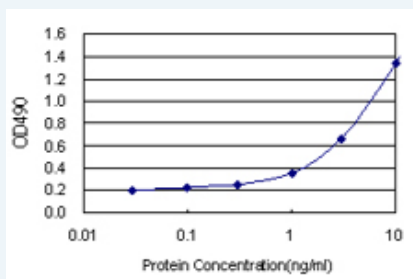
[List All](#)

Specification

Product Description: This antibody pair set comes with matched antibody pair to detect and quantify protein level of human FCER2.

Reactivity: Human

Quality Control Testing: Standard curve using recombinant protein (H00002208-P01) as an analyte.



Sandwich ELISA detection sensitivity ranging from 0.3 ng/ml to 100 ng/ml.

Supplied Product: Antibody pair set content:
 1. Capture antibody: rabbit MaxPab® affinity purified polyclonal anti-FCER2 (100 ug)
 2. Detection antibody: mouse purified polyclonal anti-FCER2 (20 ug)
 *Reagents are sufficient for at least 1-2 x 96 well plates using recommended protocols.

Storage Instruction: Store reagents of the antibody pair set at -20°C or lower. Please aliquot to avoid repeated freeze thaw cycle. Reagents should be returned to -20°C storage immediately after use.

MSDS:  [Download](#)

Applications

ELISA Pair (Recombinant protein)

 [Protocol Download](#)

Gene Information

Entrez GeneID: [2208](#)

Gene Name: FCER2

Gene Alias: CD23, CD23A, CLEC4J, FCE2, IGEBF

Gene Description: Fc fragment of IgE, low affinity II, receptor for (CD23)

Omim ID: [151445](#)

Gene Ontology: [Hyperlink](#)

Application Image

ELISA Pair (Recombinant protein)

Gene Summary: The human leukocyte differentiation antigen CD23 (FCE2) is a key molecule for B-cell activation and growth. It is the low-affinity receptor for IgE. The truncated molecule can be secreted, then functioning as a potent mitogenic growth factor.[supplied by OMIM

Other Designations: C-type lectin domain family 4, member J,CD23 antigen,Fc fragment of IgE, low affinity II, receptor for (CD23A)

Gene Pathway

Hematopoietic cell lineage

Related Disease

Asthma Asthma Birth Weight Bronchiolitis, Viral Genetic Predisposition to Disease
Glioblastoma Glioma Infant, Premature, Diseases Leukemia Leukemia, Myeloid, Acute
Lung Neoplasms Lymphoma, Non-Hodgkin Meningeal Neoplasms Meningioma
Parkinson Disease Parkinson disease Recurrence Respiratory Syncytial Virus Infections
Severe Acute Respiratory Syndrome

[服務條款](#) | [隱私權政策](#) | [著作及商標](#) | [網站地圖](#)

©2016 亞諾法生技股份有限公司 Abnova Corporation. 版權所有.