



# SZABO SCANDIC

Part of Europa Biosite

## Produktinformation



Forschungsprodukte & Biochemikalien



Zellkultur & Verbrauchsmaterial



Diagnostik & molekulare Diagnostik



Laborgeräte & Service

Weitere Information auf den folgenden Seiten!  
See the following pages for more information!



### Lieferung & Zahlungsart

siehe unsere [Liefer- und Versandbedingungen](#)

### Zuschläge

- Mindermengenzuschlag
- Trockeneiszuschlag
- Gefahrgutzuschlag
- Expressversand

### SZABO-SCANDIC HandelsgmbH

Quellenstraße 110, A-1100 Wien

T. +43(0)1 489 3961-0

F. +43(0)1 489 3961-7

[mail@szabo-scandic.com](mailto:mail@szabo-scandic.com)

[www.szabo-scandic.com](http://www.szabo-scandic.com)

[linkedin.com/company/szaboscandic](https://www.linkedin.com/company/szaboscandic) 

## FCER2 purified MaxPab mouse polyclonal antibody (B01P) MaxPab®

Catalog # : H00002208-B01P

規格 : [ 50 ug ]

[List All](#)

### Specification

**Product Description:** Mouse polyclonal antibody raised against a full-length human FCER2 protein.

**Immunogen:** FCER2 (NP\_001993.2, 1 a.a. ~ 321 a.a) full-length human protein.

**Sequence:**  
 MEEGQYSEIEELPRRRCCRRGTQIVLLGLVTAALWAGLLTLLLLWHWDT  
 TQSLKQLEERAARNVSVSKNLESHHGDMQAQKSQSTQISQEELEELRAE  
 QQRLKSQDLELSWNLNGLQADLSSFKSQELNERNEASDLLERLREEVTK  
 LRMELQVSSGFVCNTCPEKWINFQRKCYFGKGTQQWVHARYACDDM  
 EGQLVSIHSPEEQDFLTKHASHTGSWIGLRNLDLKGFIWVDGSHVDYSN  
 WAPGEPTSRSGEDCVMMRGSGRWINDAFCDRKLGAWVCDRLATCTP  
 PASEGSAESMGPDSPDPDGRLLTPSAPLHS

**Host:** Mouse

**Reactivity:** Human

**Quality Control Testing:** Antibody reactive against mammalian transfected lysate.

**Storage Buffer:** In 1x PBS, pH 7.4

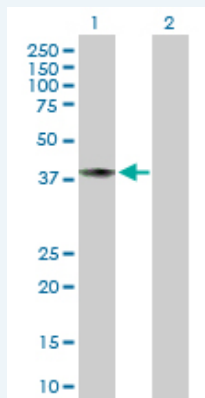
**Storage Instruction:** Store at -20°C or lower. Aliquot to avoid repeated freezing and thawing.

**MSDS:**  [Download](#)

**Datasheet:**  [Download](#)

### Applications


#### Western Blot (Transfected lysate)



Western Blot analysis of FCER2 expression in transfected 293T cell line ([H00002208-T02](#)) by FCER2 MaxPab polyclonal antibody.

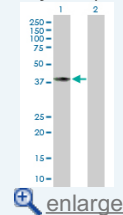
Lane 1: FCER2 transfected lysate(35.31 KDa).

Lane 2: Non-transfected lysate.

 [Protocol Download](#)

### Application Image

Western Blot (Transfected lysate)



## Gene Information

---

**Entrez GeneID:** [2208](#)

---

**GeneBank  
Accession#:** [NM\\_002002.3](#)

---

**Protein  
Accession#:** [NP\\_001993.2](#)

---

**Gene Name:** FCER2

---

**Gene Alias:** CD23,CD23A,CLEC4J,FCE2,IGEBF

---

**Gene  
Description:** Fc fragment of IgE, low affinity II, receptor for (CD23)

---

**Omim ID:** [151445](#)

---

**Gene Ontology:** [Hyperlink](#)

---

**Gene Summary:** The human leukocyte differentiation antigen CD23 (FCE2) is a key molecule for B-cell activation and growth. It is the low-affinity receptor for IgE. The truncated molecule can be secreted, then functioning as a potent mitogenic growth factor.[supplied by OMIM]

---

**Other  
Designations:** C-type lectin domain family 4, member J,CD23 antigen,Fc fragment of IgE, low affinity II, receptor for (CD23A)

---

## Gene Pathway

---

[Hematopoietic cell lineage](#)

## Related Disease

---

[Asthma](#) [Asthma Birth Weight](#) [Bronchiolitis, Viral](#) [Genetic Predisposition to Disease](#)  
[Glioblastoma](#) [Glioma Infant, Premature, Diseases](#) [Leukemia](#) [Leukemia, Myeloid, Acute](#)  
[Lung Neoplasms](#) [Lymphoma, Non-Hodgkin](#) [Meningeal Neoplasms](#) [Meningioma](#)  
[Parkinson Disease](#) [Parkinson disease Recurrence](#) [Respiratory Syncytial Virus Infections](#)  
[Severe Acute Respiratory Syndrome](#)

---

[服務條款](#) | [隱私權政策](#) | [著作及商標](#) | [網站地圖](#)

©2016 亞諾法生技股份有限公司 Abnova Corporation. 版權所有.