



SZABO SCANDIC

Part of Europa Biosite

Produktinformation



Forschungsprodukte & Biochemikalien



Zellkultur & Verbrauchsmaterial



Diagnostik & molekulare Diagnostik



Laborgeräte & Service

Weitere Information auf den folgenden Seiten!
See the following pages for more information!



Lieferung & Zahlungsart

siehe unsere [Liefer- und Versandbedingungen](#)

Zuschläge

- Mindermengenzuschlag
- Trockeneiszuschlag
- Gefahrgutzuschlag
- Expressversand

SZABO-SCANDIC HandelsgmbH

Quellenstraße 110, A-1100 Wien

T. +43(0)1 489 3961-0

F. +43(0)1 489 3961-7

mail@szabo-scandic.com

www.szabo-scandic.com

[linkedin.com/company/szaboscandic](https://www.linkedin.com/company/szaboscandic) 



FCER2 purified MaxPab rabbit polyclonal antibody (D01P) MaxPab®

Catalog # : H00002208-D01P

規格 : [100 ug]

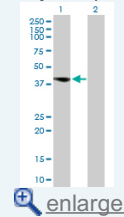
[List All](#)

Specification

Product Description:	Rabbit polyclonal antibody raised against a full-length human FCER2 protein.
Immunogen:	FCER2 (NP_001993.2, 1 a.a. ~ 321 a.a) full-length human protein.
Sequence:	MEEGQYSEIEELPRRRCCRRGTQIVLLGLVTAALWAGLLTLLLLWHWDT TQSLKQLEERAARNVSVSKNLESHHGDQMAQKSQSTQISQELEELRAE QQRLKSQDLELSWNLNGLQADLSSFKSQELNERNEASDLLERLREEVTK LRMELQVSSGFVCNTCPEKWINFQRKCYFGKGTQWVHARYACDDM EGQLVSIHSPEEQDFLTKHASHTGSWIGLRNLDLKGFIWVDGSHVDYSN WAPGEPTSRSQGEDCVMMRGSGRWINDAFCDRKLGAWVCDRLATCTP PASEGSAESMGPDSPDPDGRLLTPSAPLHS
Host:	Rabbit
Reactivity:	Human
Quality Control Testing:	Antibody reactive against mammalian transfected lysate.
Storage Buffer:	In 1x PBS, pH 7.4
Storage Instruction:	Store at -20°C or lower. Aliquot to avoid repeated freezing and thawing.
MSDS:	 Download
Datasheet:	 Download

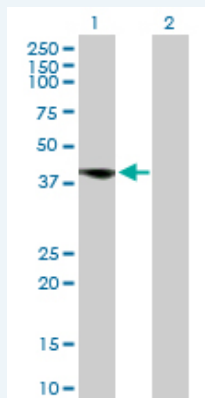
Application Image

Western Blot (Transfected lysate)




Applications

Western Blot (Transfected lysate)



Western Blot analysis of FCER2 expression in transfected 293T cell line (H00002208-T02) by FCER2 MaxPab polyclonal antibody.

Lane 1: FCER2 transfected lysate(36.50 KDa).
Lane 2: Non-transfected lysate.

 [Protocol Download](#)

Gene Information

Entrez GeneID: [2208](#)

**GeneBank
Accession#:** [NM_002002.3](#)

**Protein
Accession#:** [NP_001993.2](#)

Gene Name: FCER2

Gene Alias: CD23,CD23A,CLEC4J,FCE2,IGEBF

**Gene
Description:** Fc fragment of IgE, low affinity II, receptor for (CD23)

Omim ID: [151445](#)

Gene Ontology: [Hyperlink](#)

Gene Summary: The human leukocyte differentiation antigen CD23 (FCE2) is a key molecule for B-cell activation and growth. It is the low-affinity receptor for IgE. The truncated molecule can be secreted, then functioning as a potent mitogenic growth factor.[supplied by OMIM]

**Other
Designations:** C-type lectin domain family 4, member J,CD23 antigen,Fc fragment of IgE, low affinity II, receptor for (CD23A)

Gene Pathway

[Hematopoietic cell lineage](#)

Related Disease

[Asthma](#) [Asthma Birth Weight](#) [Bronchiolitis, Viral](#) [Genetic Predisposition to Disease](#)
[Glioblastoma](#) [Glioma Infant, Premature, Diseases](#) [Leukemia](#) [Leukemia, Myeloid, Acute](#)
[Lung Neoplasms](#) [Lymphoma, Non-Hodgkin](#) [Meningeal Neoplasms](#) [Meningioma](#)
[Parkinson Disease](#) [Parkinson disease Recurrence](#) [Respiratory Syncytial Virus Infections](#)
[Severe Acute Respiratory Syndrome](#)

[服務條款](#) | [隱私權政策](#) | [著作及商標](#) | [網站地圖](#)

©2016 亞諾法生技股份有限公司 Abnova Corporation. 版權所有.