



SZABO SCANDIC

Part of Europa Biosite

Produktinformation



Forschungsprodukte & Biochemikalien



Zellkultur & Verbrauchsmaterial



Diagnostik & molekulare Diagnostik



Laborgeräte & Service

Weitere Information auf den folgenden Seiten!
See the following pages for more information!



Lieferung & Zahlungsart

siehe unsere [Liefer- und Versandbedingungen](#)

Zuschläge

- Mindermengenzuschlag
- Trockeneiszuschlag
- Gefahrgutzuschlag
- Expressversand

SZABO-SCANDIC HandelsgmbH

Quellenstraße 110, A-1100 Wien

T. +43(0)1 489 3961-0

F. +43(0)1 489 3961-7

mail@szabo-scandic.com

www.szabo-scandic.com

[linkedin.com/company/szaboscandic](https://www.linkedin.com/company/szaboscandic) 

FCER2 (Human) IP-WB Antibody Pair

Catalog # : H00002208-PW1

規格 : [1 Set]

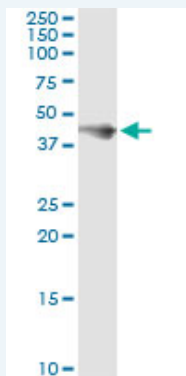
List All

Specification

Product Description: This IP-WB antibody pair set comes with one antibody for immunoprecipitation and another to detect the precipitated protein in western blot.

Reactivity: Human

Quality Control Testing: Immunoprecipitation-Western Blot (IP-WB)



Immunoprecipitation of FCER2 transfected lysate using mouse monoclonal anti-FCER2 and Protein A Magnetic Bead ([U0007](#)), and immunoblotted with rabbit polyclonal anti-FCER2.

Supplied Product: Antibody pair set content:
1. Antibody pair for IP: mouse monoclonal anti-FCER2 (300 ug)
2. Antibody pair for WB: rabbit polyclonal anti-FCER2 (50 ul)

Storage Instruction: Store reagents of the antibody pair set at -20°C or lower. Please aliquot to avoid repeated freeze thaw cycle. Reagents should be returned to -20°C storage immediately after use.

MSDS:  [Download](#)

Applications

Immunoprecipitation-Western Blot

 [Protocol Download](#)

Gene Information

Entrez GeneID: [2208](#)

Gene Name: FCER2

Gene Alias: CD23,CD23A,CLEC4J,FCE2,IGEBF

Gene Description: Fc fragment of IgE, low affinity II, receptor for (CD23)

Omim ID: [151445](#)

Gene Ontology: [Hyperlink](#)

Application Image

Immunoprecipitation-Western Blot

Gene Summary: The human leukocyte differentiation antigen CD23 (FCE2) is a key molecule for B-cell activation and growth. It is the low-affinity receptor for IgE. The truncated molecule can be secreted, then functioning as a potent mitogenic growth factor.[supplied by OMIM

Other Designations: C-type lectin domain family 4, member J,CD23 antigen,Fc fragment of IgE, low affinity II, receptor for (CD23A)

Gene Pathway

[Hematopoietic cell lineage](#)

Related Disease

[Asthma](#) [Asthma](#) [Birth Weight](#) [Bronchiolitis, Viral](#) [Genetic Predisposition to Disease](#)
[Glioblastoma](#) [Glioma](#) [Infant, Premature, Diseases](#) [Leukemia](#) [Leukemia, Myeloid, Acute](#)
[Lung Neoplasms](#) [Lymphoma, Non-Hodgkin](#) [Meningeal Neoplasms](#) [Meningioma](#)
[Parkinson Disease](#) [Parkinson disease](#) [Recurrence](#) [Respiratory Syncytial Virus Infections](#)
[Severe Acute Respiratory Syndrome](#)

[服務條款](#) | [隱私權政策](#) | [著作及商標](#) | [網站地圖](#)

©2016 亞諾法生技股份有限公司 Abnova Corporation. 版權所有.