



# SZABO SCANDIC

Part of Europa Biosite

## Produktinformation



Forschungsprodukte & Biochemikalien



Zellkultur & Verbrauchsmaterial



Diagnostik & molekulare Diagnostik



Laborgeräte & Service

Weitere Information auf den folgenden Seiten!  
See the following pages for more information!



### Lieferung & Zahlungsart

siehe unsere [Liefer- und Versandbedingungen](#)

### Zuschläge

- Mindermengenzuschlag
- Trockeneiszuschlag
- Gefahrgutzuschlag
- Expressversand

### SZABO-SCANDIC HandelsgmbH

Quellenstraße 110, A-1100 Wien

T. +43(0)1 489 3961-0

F. +43(0)1 489 3961-7

[mail@szabo-scandic.com](mailto:mail@szabo-scandic.com)

[www.szabo-scandic.com](http://www.szabo-scandic.com)

[linkedin.com/company/szaboscandic](https://www.linkedin.com/company/szaboscandic) 

## FCER2 293T Cell Transient Overexpression Lysate(Denatured)

Catalog # : H00002208-T01

規格 : [ 100 uL ]

[List All](#)

### Specification

**Transfected Cell Line:** 293T

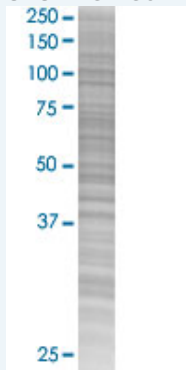
**Plasmid:** pCMV-FCER2 full-length

**Host:** Human

**Theoretical MW (kDa):** 35.42

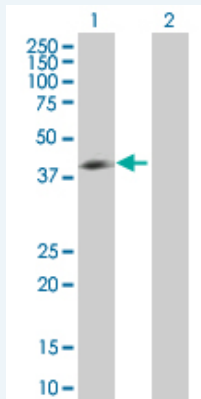
**Quality Control Testing:** Transient overexpression cell lysate was tested with Anti-FCER2 antibody ([H00002208-B01](#)) by Western Blots.

#### SDS-PAGE Gel



FCER2 transfected lysate.

#### Western Blot



Lane 1: FCER2 transfected lysate ( 35.42 KDa)

Lane 2: Non-transfected lysate.

**Storage Buffer:** 1X Sample Buffer (50 mM Tris-HCl, 2% SDS, 10% glycerol, 300 mM 2-mercaptoethanol, 0.01% Bromophenol blue)

**Storage Instruction:** Store at -80°C. Aliquot to avoid repeated freezing and thawing.

**MSDS:**  [Download](#)

### Applications

### Application Image

Western Blot

## Western Blot

### Gene Information

Entrez GeneID: [2208](#)

GeneBank Accession#: [NM\\_002002.3](#)

Protein Accession#: =

Gene Name: FCER2

Gene Alias: CD23,CD23A,CLEC4J,FCE2,IGEBF

Gene Description: Fc fragment of IgE, low affinity II, receptor for (CD23)

Omim ID: [151445](#)

Gene Ontology: [Hyperlink](#)

**Gene Summary:** The human leukocyte differentiation antigen CD23 (FCE2) is a key molecule for B-cell activation and growth. It is the low-affinity receptor for IgE. The truncated molecule can be secreted, then functioning as a potent mitogenic growth factor.[supplied by OMIM]

**Other Designations:** C-type lectin domain family 4, member J,CD23 antigen,Fc fragment of IgE, low affinity II, receptor for (CD23A)

### Gene Pathway

[Hematopoietic cell lineage](#)

### Related Disease

[Asthma](#) [Asthma](#) [Birth Weight](#) [Bronchiolitis, Viral](#) [Genetic Predisposition to Disease](#)  
[Glioblastoma](#) [Glioma](#) [Infant, Premature, Diseases](#) [Leukemia](#) [Leukemia, Myeloid, Acute](#)  
[Lung Neoplasms](#) [Lymphoma, Non-Hodgkin](#) [Meningeal Neoplasms](#) [Meningioma](#)  
[Parkinson Disease](#) [Parkinson disease](#) [Recurrence](#) [Respiratory Syncytial Virus Infections](#)  
[Severe Acute Respiratory Syndrome](#)

[服務條款](#) | [隱私權政策](#) | [著作及商標](#) | [網站地圖](#)

©2016 亞諾法生技股份有限公司 Abnova Corporation. 版權所有.