



SZABO SCANDIC

Part of Europa Biosite

Produktinformation



Forschungsprodukte & Biochemikalien



Zellkultur & Verbrauchsmaterial



Diagnostik & molekulare Diagnostik



Laborgeräte & Service

Weitere Information auf den folgenden Seiten!
See the following pages for more information!



Lieferung & Zahlungsart

siehe unsere [Liefer- und Versandbedingungen](#)

Zuschläge

- Mindermengenzuschlag
- Trockeneiszuschlag
- Gefahrgutzuschlag
- Expressversand

SZABO-SCANDIC HandelsgmbH

Quellenstraße 110, A-1100 Wien

T. +43(0)1 489 3961-0

F. +43(0)1 489 3961-7

mail@szabo-scandic.com

www.szabo-scandic.com

[linkedin.com/company/szaboscandic](https://www.linkedin.com/company/szaboscandic) 

FCGR3A monoclonal antibody (M03), clone 2B11

Catalog # : H00002214-M03

規格 : [100 ug]

[List All](#)

Specification

Product Description: Mouse monoclonal antibody raised against a full-length recombinant FCGR3A.

Immunogen: FCGR3A (AAH17865.1, 17 a.a. ~ 254 a.a) full-length recombinant protein with GST tag. MW of the GST tag alone is 26 KDa.

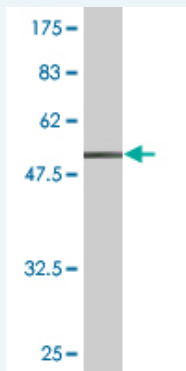
Sequence: GMRTEDLPKAVVFLEPQWYRVLEKDSVTLKCCGAYSPEDNSTQWFHN
ESLISSQASSYFIDAATVDDSGEYRCQTNLSTLSDPVQLVHIGWLLQA
PRWVFKEEDPIHLRCHSWKNTALHKVTYLQNGKGRKYFHNSDFYIPKA
TLKDSGSYFCRGLVGSKNVSSETVNITITQGLAVSTISSFFPPGYQVSFC
LVMVLLFAVDTGLYFSVKTNIRSSTRDWKDKHKFKWRKDPQDK

Host: Mouse

Reactivity: Human

Isotype: IgG2a Kappa

Quality Control Testing: Antibody Reactive Against Recombinant Protein.



Western Blot detection against Immunogen (51.92 KDa) .

Storage Buffer: In 1x PBS, pH 7.4

Storage Instruction: Store at -20°C or lower. Aliquot to avoid repeated freezing and thawing.

MSDS: [Download](#)

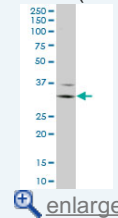
Datasheet: [Download](#)

Applications

Western Blot (Cell lysate)

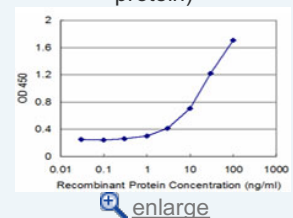
Application Image

Western Blot (Cell lysate)

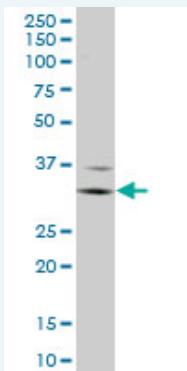


Western Blot (Recombinant protein)

Sandwich ELISA (Recombinant protein)



ELISA



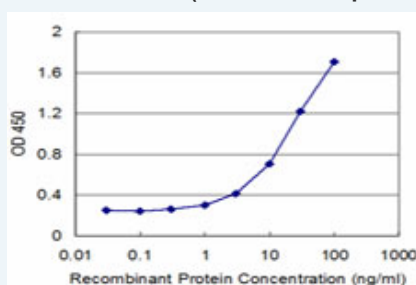
FCGR3A monoclonal antibody (M03), clone 2B11. Western Blot analysis of FCGR3A expression in Jurkat (Cat # L017V1).

[Protocol Download](#)

Western Blot (Recombinant protein)

[Protocol Download](#)

Sandwich ELISA (Recombinant protein)



Detection limit for recombinant GST tagged FCGR3A is approximately 1ng/ml as a capture antibody.

[Protocol Download](#)

ELISA

Gene Information

Entrez GeneID: [2214](#)

GeneBank [BC017865](#)

Accession#:

Protein [AAH17865.1](#)

Accession#:

Gene Name: FCGR3A

Gene Alias: CD16,CD16A,FCG3,FCGR3,FCGR3B,FCR-10,FCRIII,FCRIIIA,IGFR3

Gene Description: Fc fragment of IgG, low affinity IIIa, receptor (CD16a)

Description:

Omim ID: [146740](#), [152700](#)

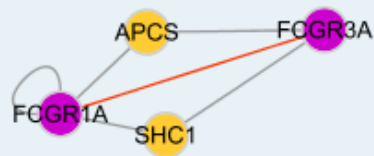
Gene Ontology: [Hyperlink](#)

Gene Summary: This gene encodes a receptor for the Fc portion of immunoglobulin G, and it is involved in the removal of antigen-antibody complexes from the circulation, as well as other antibody-dependent responses. This gene (FCGR3A) is highly similar to another nearby gene (FCGR3B) located on chromosome 1. The receptor encoded by this gene is expressed on natural killer (NK) cells as an integral membrane glycoprotein anchored through a transmembrane peptide, whereas FCGR3B is expressed on polymorphonuclear neutrophils (PMN) where the receptor is anchored through a phosphatidylinositol (PI) linkage.

Mutations in this gene have been linked to susceptibility to recurrent viral infections, susceptibility to systemic lupus erythematosus, and alloimmune neonatal neutropenia. Alternatively spliced transcript variants encoding different isoforms have been found for this gene. [provided by RefSeq]

Other Designations: Fc fragment of IgG, low affinity III, receptor for (CD16),Fc fragment of IgG, low affinity IIIa, receptor for (CD16),Fc gamma receptor III-A,Fc-gamma RIII-alpha,Fc-gamma RIIIa,Fc-gamma receptor III-2 (CD 16),Fc-gamma receptor IIIb (CD16),FcgammaRIIIA,OTTH

Interactome



Gene Pathway

[Fc gamma R-mediated phagocytosis](#) [Natural killer cell mediated cytotoxicity](#)
[Systemic lupus erythematosus](#)

Related Disease

[Acute Disease](#) [Addison Disease](#) [Aggressive Periodontitis](#) [Agranulocytosis](#)
[Alveolar Bone Loss](#) [Anemia, Sickle Cell](#) [Anemia, sickle cell](#)
[Anti-Glomerular Basement Membrane Disease](#) [Arthritis, Psoriatic](#) [Arthritis, Rheumatoid](#)
[Asthma](#) [Asthma](#) [Atherosclerosis](#) [Autoimmune Diseases](#) [Behcet Syndrome](#) [Breast cancer](#)
[Breast Neoplasms](#) [Candidiasis](#) [Carcinoma, Squamous Cell](#)

... see more