



# SZABO SCANDIC

Part of Europa Biosite

## Produktinformation



Forschungsprodukte & Biochemikalien



Zellkultur & Verbrauchsmaterial



Diagnostik & molekulare Diagnostik



Laborgeräte & Service

Weitere Information auf den folgenden Seiten!  
See the following pages for more information!



### Lieferung & Zahlungsart

siehe unsere [Liefer- und Versandbedingungen](#)

### Zuschläge

- Mindermengenzuschlag
- Trockeneiszuschlag
- Gefahrgutzuschlag
- Expressversand

### SZABO-SCANDIC HandelsgmbH

Quellenstraße 110, A-1100 Wien

T. +43(0)1 489 3961-0

F. +43(0)1 489 3961-7

[mail@szabo-scandic.com](mailto:mail@szabo-scandic.com)

[www.szabo-scandic.com](http://www.szabo-scandic.com)

[linkedin.com/company/szaboscandic](https://www.linkedin.com/company/szaboscandic) 

**FECH purified MaxPab mouse polyclonal antibody (B01P)** MaxPab®

Catalog # : H00002235-B01P

規格 : [ 50 ug ]

List All

**Specification**

**Product Description:** Mouse polyclonal antibody raised against a full-length human FECH protein.

**Immunogen:** FECH (NP\_000131.2, 1 a.a. ~ 423 a.a) full-length human protein.

**Sequence:**  
 MRSLGANMAAALRAAGVLLRDPLASSSWRVCQPWRWKSGAAAAAVTT  
 ETAQHAQGAKPQVQPQKRKPKTGILMLNMGGPETLGDVHDFLLRLFLD  
 RDLMTLPIQNKLAPFIAKRRTPKIQEQYRRIGGGSPIKIWT SKQGEGMVKL  
 LDELSPNTAPHKYYIGFRYVHPLTEEAIEEMERDGLERAIAFTQYPQYSCS  
 TTGSSLNAIYRYNQVGRKPTMKWSTIDRWPTHLLIQCFADHILKELDH  
 FPLEKRSEVILFSAHSLPMSVNVNRGDPYPQEVSATVQKVMERLEYCNP  
 YRLVWQSKVGPMPWLGPTDESIGL C ERGRKNILLVPIAFTSDHIETLY  
 ELDIEYSQVLAKECGVENIRRAESLNGNPLFSKALADLVHSHIQSNELCSK  
 QLTLSCLPCVNPVCRETKSFFTSQQL

**Host:** Mouse

**Reactivity:** Human

**Quality Control Testing:** Antibody reactive against mammalian transfected lysate.

**Storage Buffer:** In 1x PBS, pH 7.4

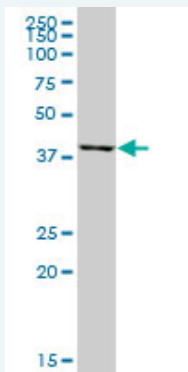
**Storage Instruction:** Store at -20°C or lower. Aliquot to avoid repeated freezing and thawing.

**MSDS:**  [Download](#)

**Datasheet:**  [Download](#)

**Applications**

**Western Blot (Tissue lysate)**



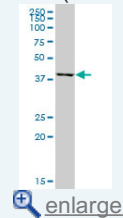
FECH MaxPab polyclonal antibody. Western Blot analysis of FECH expression in human liver.

 [Protocol Download](#)

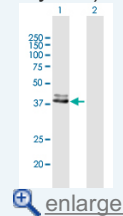
**Western Blot (Transfected lysate)**

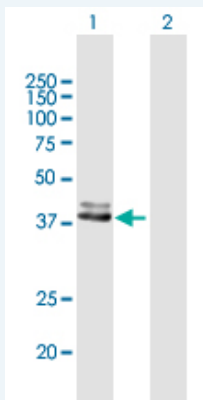
**Application Image**

**Western Blot (Tissue lysate)**



**Western Blot (Transfected lysate)**





Western Blot analysis of FECH expression in transfected 293T cell line ([H00002235-T02](#)) by FECH MaxPab polyclonal antibody.

Lane 1: FECH transfected lysate(46.53 KDa).  
Lane 2: Non-transfected lysate.

 [Protocol Download](#)

### Gene Information

Entrez GeneID: [2235](#)

GeneBank [NM\\_000140.2](#)  
Accession#:

Protein [NP\\_000131.2](#)  
Accession#:

Gene Name: FECH

Gene Alias: EPP,FCE

Gene [ferrochelatase \(protoporphyrin\)](#)  
Description:

Omim ID: [177000](#)

Gene Ontology: [Hyperlink](#)

**Gene Summary:** The protein encoded by this gene is localized to the mitochondrion, where it catalyzes the insertion of the ferrous form of iron into protoporphyrin IX in the heme synthesis pathway. Mutations in this gene are associated with erythropoietic protoporphyria. Two transcript variants encoding different isoforms have been found for this gene. [provided by RefSeq]

Other [ferrochelatase,heme synthetase,protoheme ferro-lyase](#)  
Designations:

### Gene Pathway

[Metabolic pathways](#) [Porphyrin and chlorophyll metabolism](#)

### Related Disease

[Genetic Predisposition to Disease](#) [Porphyria](#) [Protoporphyrin](#), [Erythropoietic Tobacco Use Disorder](#)