



# SZABO SCANDIC

Part of Europa Biosite

## Produktinformation



Forschungsprodukte & Biochemikalien



Zellkultur & Verbrauchsmaterial



Diagnostik & molekulare Diagnostik



Laborgeräte & Service

Weitere Information auf den folgenden Seiten!  
See the following pages for more information!



### Lieferung & Zahlungsart

siehe unsere [Liefer- und Versandbedingungen](#)

### Zuschläge

- Mindermengenzuschlag
- Trockeneiszuschlag
- Gefahrgutzuschlag
- Expressversand

### SZABO-SCANDIC HandelsgmbH

Quellenstraße 110, A-1100 Wien

T. +43(0)1 489 3961-0

F. +43(0)1 489 3961-7

[mail@szabo-scandic.com](mailto:mail@szabo-scandic.com)

[www.szabo-scandic.com](http://www.szabo-scandic.com)

[linkedin.com/company/szaboscandic](https://www.linkedin.com/company/szaboscandic) 

## FECH MaxPab mouse polyclonal antibody (B02) MaxPab®

Catalog # : H00002235-B02

規格 : [ 50 uL ]

[List All](#)

### Specification

**Product Description:** Mouse polyclonal antibody raised against a full-length human FECH protein.

**Immunogen:** FECH (NP\_000131, 1 a.a. ~ 423 a.a) full-length human protein.

**Sequence:**  
 MRSLGANMAAALRAAGVLLRDPLASSSWRVCQPWRWKSGAAAAAVTT  
 ETAQHAQGAKPQVQPQRKPKTGILMLNMGGPETLGDVHDFLLRFLD  
 QDLMTLPIONKLPFIKRRTPKIQEQYRRIGGGSPIKIWT SKQGEGMVKL  
 LDELSNTPAPHKYYIGFRYVHPLTEEAIEEMERDGLERAIAFTQYPQYSCS  
 TTGSSLNAIYRYNQVGRKPTMKWSTIDRWPTHLLIQCFADHILKELDH  
 FPLEKRSEVILFSAHSLPMSV VNRGDPYPQEVSATVQKVMERLEYCNP  
 YRLVWQSKVGPMPWLGPTDESIGLCERGRKNILLVPIAFTSDHIETLY  
 ELDIEYSQVLAKECGVENIRRAESLNGNPLFSKALADLVHSHIQSNELCSK  
 QLTLSCPLCVNPVCRETKSFFTSQQL

**Host:** Mouse

**Reactivity:** Human

**Quality Control Testing:** Antibody reactive against mammalian transfected lysate.

**Storage Buffer:** No additive

**Storage Instruction:** Store at -20°C or lower. Aliquot to avoid repeated freezing and thawing.

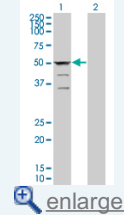
**Note:** For IHC and IF applications, antibody purification with Protein A will be needed prior to use.

**MSDS:** [Download](#)

**Datasheet:** [Download](#)

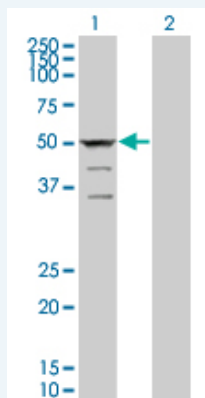
### Application Image

Western Blot (Transfected lysate)



### Applications

Western Blot (Transfected lysate)



Western Blot analysis of FECH expression in transfected 293T cell line (H00002235-T01) by FECH MaxPab polyclonal antibody.

Lane 1: FECH transfected lysate(46.53 KDa).  
Lane 2: Non-transfected lysate.

 [Protocol Download](#)

---

### Gene Information

---

**Entrez GeneID:** [2235](#)

**GeneBank  
Accession#:** [NM\\_000140](#)

**Protein  
Accession#:** [NP\\_000131](#)

**Gene Name:** FECH

**Gene Alias:** EPP,FCE

**Gene  
Description:** ferrochelatase (protoporphyrin)

**Omim ID:** [177000](#)

**Gene Ontology:** [Hyperlink](#)

**Gene Summary:** The protein encoded by this gene is localized to the mitochondrion, where it catalyzes the insertion of the ferrous form of iron into protoporphyrin IX in the heme synthesis pathway. Mutations in this gene are associated with erythropoietic protoporphyria. Two transcript variants encoding different isoforms have been found for this gene. [provided by RefSeq]

**Other  
Designations:** ferrochelatase,heme synthetase,protoheme ferro-lyase

---

### Gene Pathway

---

[Metabolic pathways](#) [Porphyrin and chlorophyll metabolism](#)

---

### Related Disease

---

[Genetic Predisposition to Disease](#) [Porphyria](#) [Protoporphyrin](#), [Erythropoietic](#)  
[Tobacco Use Disorder](#)

---

[服務條款](#) | [隱私權政策](#) | [著作及商標](#) | [網站地圖](#)

©2016 亞諾法生技股份有限公司 Abnova Corporation. 版權所有.