



SZABO SCANDIC

Part of Europa Biosite

Produktinformation



Forschungsprodukte & Biochemikalien



Zellkultur & Verbrauchsmaterial



Diagnostik & molekulare Diagnostik



Laborgeräte & Service

Weitere Information auf den folgenden Seiten!
See the following pages for more information!



Lieferung & Zahlungsart

siehe unsere [Liefer- und Versandbedingungen](#)

Zuschläge

- Mindermengenzuschlag
- Trockeneiszuschlag
- Gefahrgutzuschlag
- Expressversand

SZABO-SCANDIC HandelsgmbH

Quellenstraße 110, A-1100 Wien

T. +43(0)1 489 3961-0

F. +43(0)1 489 3961-7

mail@szabo-scandic.com

www.szabo-scandic.com

[linkedin.com/company/szaboscandic](https://www.linkedin.com/company/szaboscandic) 

FECH monoclonal antibody (M07), clone 3H3

Catalog # : H00002235-M07

規格 : [100 ug]

[List All](#)

Specification

Product Description: Mouse monoclonal antibody raised against a partial recombinant FECH.

Immunogen: FECH (NP_000131, 314 a.a. ~ 423 a.a) partial recombinant protein with GST tag. MW of the GST tag alone is 26 KDa.

Sequence: QTDESIKGLCERGRKNILLVPIAFTSDHIETLYELDIEYSQVLAKECGVENIR
RAESLNGNPLFSKALADLVHSHIQSNELCSKQLTLSCPLCVNPVCRETKS
FFTSQQQL

Host: Mouse

Reactivity: Human

Isotype: IgG2b Kappa

Quality Control Testing: Antibody Reactive Against Recombinant Protein.

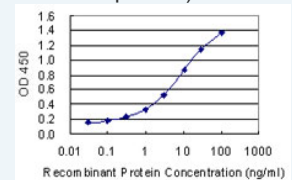
Storage Buffer: In 1x PBS, pH 7.4

Storage Instruction: Store at -20°C or lower. Aliquot to avoid repeated freezing and thawing.

Datasheet:  [Download](#)

Application Image

Sandwich ELISA (Recombinant protein)

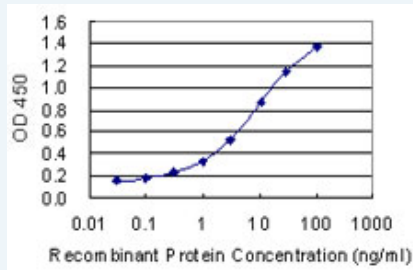


 [enlarge](#)

ELISA

Applications

Sandwich ELISA (Recombinant protein)



Detection limit for recombinant GST tagged FECH is 0.03 ng/ml as a capture antibody.

 [Protocol Download](#)

ELISA

Gene Information

Entrez GeneID: [2235](#)

GeneBank Accession#: [NM_000140](#)

Protein [NP_000131](#)

Accession#:**Gene Name:** FECH**Gene Alias:** EPP,FCE**Gene Description:** ferrochelatase (protoporphyrin)**Omim ID:** [177000](#)**Gene Ontology:** [Hyperlink](#)

Gene Summary: The protein encoded by this gene is localized to the mitochondrion, where it catalyzes the insertion of the ferrous form of iron into protoporphyrin IX in the heme synthesis pathway. Mutations in this gene are associated with erythropoietic protoporphyria. Two transcript variants encoding different isoforms have been found for this gene. [provided by RefSeq]

Other Designations: ferrochelatase,heme synthetase,protoheme ferro-lyase

Gene Pathway[Metabolic pathways](#) [Porphyrin and chlorophyll metabolism](#)**Related Disease**[Genetic Predisposition to Disease](#) [Porphyria](#) [Protoporphyrin](#), [Erythropoietic Tobacco Use Disorder](#)