



# SZABO SCANDIC

Part of Europa Biosite

## Produktinformation



Forschungsprodukte & Biochemikalien



Zellkultur & Verbrauchsmaterial



Diagnostik & molekulare Diagnostik



Laborgeräte & Service

Weitere Information auf den folgenden Seiten!  
See the following pages for more information!



### Lieferung & Zahlungsart

siehe unsere [Liefer- und Versandbedingungen](#)

### Zuschläge

- Mindermengenzuschlag
- Trockeneiszuschlag
- Gefahrgutzuschlag
- Expressversand

### SZABO-SCANDIC HandelsgmbH

Quellenstraße 110, A-1100 Wien

T. +43(0)1 489 3961-0

F. +43(0)1 489 3961-7

[mail@szabo-scandic.com](mailto:mail@szabo-scandic.com)

[www.szabo-scandic.com](http://www.szabo-scandic.com)

[linkedin.com/company/szaboscandic](https://www.linkedin.com/company/szaboscandic) 

# FES purified MaxPab mouse polyclonal antibody (B01P) MaxPab®

Catalog # : H00002242-B01P

規格 : [ 50 ug ]

[List All](#)

## Specification

**Product Description:** Mouse polyclonal antibody raised against a full-length human FES protein.

**Immunogen:** FES (ABM85456.1, 1 a.a. ~ 822 a.a) full-length human protein.

**Sequence:**  
 MGFSSSELCSPPQGHGVLQQMQEAE LRLLEGMRKWMAQRVKS DREYAG  
 LLHHMSLQDSGGQSRAISPDSPISQSWAEITSQTEGLSRLLRQHAEDLNS  
 GPLSKLSLLIRERQQLRKYSEQWQQ LQQELTKTHSQDIEKLKSQYRAL  
 ARDSAQAKRKYQEASKDKDRDKAKDKYV RSLWKLFAHHNRYV LGVRAA  
 QLHHQH HHQLLLPGLLRSLQDLHEEMACILKEILQEYLEISSLVQDEVVAIH  
 REMAAAAARIQPEAEYQGFLRQYGSAPDVPPCVTFDESLL EEGEPELEPG  
 ELQLNELTVESVQHTLTSVTDELAVATEMVFRRQEMVTQLQQELRNEEE  
 NTHPRERVQLL GKRQVLQEALQGLQVALCSQAKLQAQQELLQTKLEHL  
 GPGEPVVLLQDDRHSTSSSEQEREGGRTP TLEILKSHISGIFRPKFSL  
 PPPLQLIPEVQKPLHEQLWYHGAIPRAEVAELLVHSGDFLVRESQ GKQEY  
 VLSVLWDGLPRHFIIQSLDNLYRLEGE GFPSIPLLDHLLSTQQPLTKKSG  
 VVLRHRAVPKDKWVLNHEDLVLGEQIGRGNFGEVFSGR LRADNTLVAVKS  
 CRETLPDDLKAKFLQEARILKQYSHPNVRLIGVCTQKQPIYVMELVQGG  
 DFLTFLRTEGARLRVKLLQMVGDAAAGMEYLESKCCIH RDLAARNCLV  
 TEKNVLKISDFGMSREEADGVYAASGGLRQVPVKWTAPEALNYGRYSS  
 ESDVWSFGILLWETFSLGASPYPNLSNQQTREFVEKGGRLPCPELCPD  
 AVFRLMEQCWAYEPGQRPSFSTIYQELQSIRK RHR

**Host:** Mouse

**Reactivity:** Human

**Quality Control Testing:** Antibody reactive against mammalian transfected lysate.

**Storage Buffer:** In 1x PBS, pH 7.4

**Storage Instruction:** Store at -20°C or lower. Aliquot to avoid repeated freezing and thawing.

**MSDS:** [Download](#)

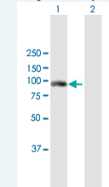
**Datasheet:** [Download](#)

## Applications

**Western Blot (Transfected lysate)**

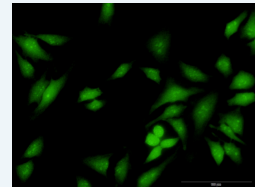
## Application Image

Western Blot (Transfected lysate)

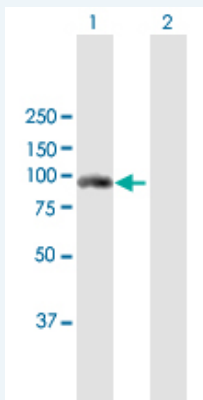


[enlarge](#)

Immunofluorescence



[enlarge](#)

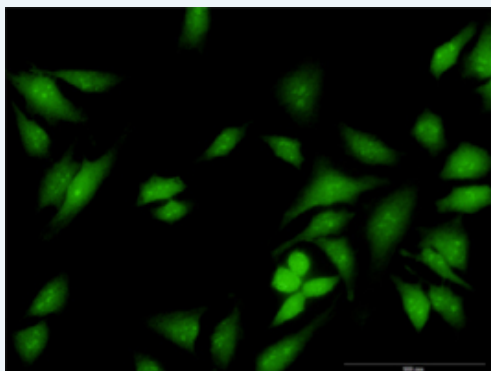


Western Blot analysis of FES expression in transfected 293T cell line ([H00002242-T01](#)) by FES MaxPab polyclonal antibody.

Lane 1: FES transfected lysate(90.42 KDa).  
Lane 2: Non-transfected lysate.

[Protocol Download](#)

### Immunofluorescence



enlarge this image

Immunofluorescence of purified MaxPab antibody to FES on HeLa cell. [antibody concentration 40 ug/ml]

[Protocol Download](#)

### Gene Information

**Entrez GeneID:** [2242](#)

**GeneBank Accession#:** [DQ894530.2](#)

**Protein Accession#:** [ABM85456.1](#)

**Gene Name:** FES

**Gene Alias:** FPS

**Gene Description:** feline sarcoma oncogene

**Omim ID:** [190030](#)

**Gene Ontology:** [Hyperlink](#)

**Gene Summary:** This gene encodes the human cellular counterpart of a feline sarcoma retrovirus protein with transforming capabilities. The gene product has tyrosine-specific protein kinase activity and that activity is required for maintenance of cellular transformation. Its chromosomal location has linked it to a specific translocation event identified in patients with acute promyelocytic leukemia but it is also involved in normal hematopoiesis as well as growth factor and cytokine receptor signaling. Alternative splicing results in multiple variants encoding different isoforms

**Other** Oncogene FES, feline sarcoma virus,c-fes/fps protein,feline sarcoma  
**Designations:** (Snyder-Theilen) viral (v-fes)/Fujinami avian sarcoma (PRCII) viral (v-fps) oncogene homolog,proto-oncogene tyrosine-protein kinase Fes/Fps

### Gene Pathway

---

[Axon guidance](#)

### Related Disease

---

[Cardiovascular Diseases](#) [Diabetes Mellitus, Type 2](#) [Edema](#) [Leukemia, Myeloid, Acute](#)  
[Lymphoproliferative Disorders](#) [Myelodysplastic Syndromes](#)

---

[服務條款](#) | [隱私權政策](#) | [著作及商標](#) | [網站地圖](#)

©2016 亞諾法生技股份有限公司 Abnova Corporation. 版權所有.