



# SZABO SCANDIC

Part of Europa Biosite

## Produktinformation



Forschungsprodukte & Biochemikalien



Zellkultur & Verbrauchsmaterial



Diagnostik & molekulare Diagnostik



Laborgeräte & Service

Weitere Information auf den folgenden Seiten!  
See the following pages for more information!



### Lieferung & Zahlungsart

siehe unsere [Liefer- und Versandbedingungen](#)

### Zuschläge

- Mindermengenzuschlag
- Trockeneiszuschlag
- Gefahrgutzuschlag
- Expressversand

### SZABO-SCANDIC HandelsgmbH

Quellenstraße 110, A-1100 Wien

T. +43(0)1 489 3961-0

F. +43(0)1 489 3961-7

[mail@szabo-scandic.com](mailto:mail@szabo-scandic.com)

[www.szabo-scandic.com](http://www.szabo-scandic.com)

[linkedin.com/company/szaboscandic](https://www.linkedin.com/company/szaboscandic) 

## FGA (Human) Matched Antibody Pair

Catalog # : H00002243-AP61

規格 : [ 1 Set ]

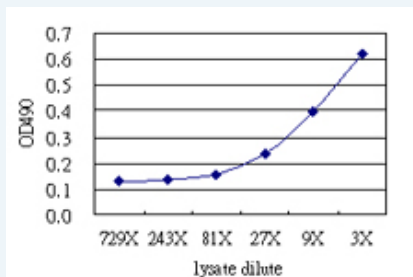
[List All](#)

### Specification

**Product Description:** This antibody pair set comes with matched antibody pair to detect and quantify protein level of human FGA.

**Reactivity:** Human

**Quality Control Testing:** Standard curve using FGA 293T overexpression lysate (non-denatured) as an analyte.



Sandwich ELISA detection sensitivity ranging from approximately 27x to 3x dilution of the FGA 293T overexpression lysate (non-denatured).

**Supplied Product:** Antibody pair set content:  
 1. Capture antibody: mouse monoclonal anti-FGA (100 ug)  
 2. Detection antibody: rabbit MaxPab® affinity purified polyclonal anti-FGA (50 ug)  
 \*Reagents are sufficient for at least 3-5 x 96 well plates using recommended protocols.

**Storage Instruction:** Store reagents of the antibody pair set at -20°C or lower. Please aliquot to avoid repeated freeze thaw cycle. Reagents should be returned to -20°C storage immediately after use.

**MSDS:**  [Download](#)

### Applications

ELISA Pair (Transfected lysate)

 [Protocol Download](#)

### Gene Information

**Entrez GeneID:** [2243](#)

**Gene Name:** FGA

**Gene Alias:** Fib2, MGC119422, MGC119423, MGC119425

**Gene Description:** fibrinogen alpha chain

**Omim ID:** [105200](#), [134820](#), [202400](#)

**Gene Ontology:** [Hyperlink](#)

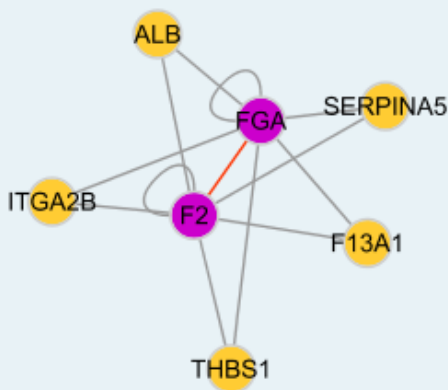
### Application Image

ELISA Pair (Transfected lysate)

**Gene Summary:** The protein encoded by this gene is the alpha component of fibrinogen, a blood-borne glycoprotein comprised of three pairs of nonidentical polypeptide chains. Following vascular injury, fibrinogen is cleaved by thrombin to form fibrin which is the most abundant component of blood clots. In addition, various cleavage products of fibrinogen and fibrin regulate cell adhesion and spreading, display vasoconstrictor and chemotactic activities, and are mitogens for several cell types. Mutations in this gene lead to several disorders, including dysfibrinogenemia, hypofibrinogenemia, afibrinogenemia and renal amyloidosis. Alternative splicing results in two isoforms which vary in the carboxy-terminus. [provided by RefSeq]

**Other Designations:** fibrinogen, A alpha polypeptide, fibrinogen, alpha chain, isoform alpha preproprotein, fibrinogen, alpha polypeptide

### Interactome



### Gene Pathway

[Complement and coagulation cascades](#)

### Related Disease

[Alzheimer Disease](#) [Alzheimer disease](#) [Anemia, Sickle Cell Anemia, sickle cell](#)  
[Angina, Unstable](#) [Aortic Diseases](#) [Atherosclerosis](#) [Atherosclerosis](#) [Brain Ischemia](#)  
[Calcinosis](#) [Cardiovascular Diseases](#) [Carotid Artery Diseases](#) [Carotid Stenosis](#)  
[Cerebral Hemorrhage](#) [Cerebral Infarction](#) [Cerebrovascular Accident](#)  
[Cerebrovascular Disorders](#) [Chronic Disease](#) [Coronary Artery Disease](#)

... see more

[服務條款](#) | [隱私權政策](#) | [著作及商標](#) | [網站地圖](#)

©2016 亞諾法生技股份有限公司 Abnova Corporation. 版權所有.