



# SZABO SCANDIC

Part of Europa Biosite

## Produktinformation



Forschungsprodukte & Biochemikalien



Zellkultur & Verbrauchsmaterial



Diagnostik & molekulare Diagnostik



Laborgeräte & Service

Weitere Information auf den folgenden Seiten!  
See the following pages for more information!



### Lieferung & Zahlungsart

siehe unsere [Liefer- und Versandbedingungen](#)

### Zuschläge

- Mindermengenzuschlag
- Trockeneiszuschlag
- Gefahrgutzuschlag
- Expressversand

### SZABO-SCANDIC HandelsgmbH

Quellenstraße 110, A-1100 Wien

T. +43(0)1 489 3961-0

F. +43(0)1 489 3961-7

[mail@szabo-scandic.com](mailto:mail@szabo-scandic.com)

[www.szabo-scandic.com](http://www.szabo-scandic.com)

[linkedin.com/company/szaboscandic](https://www.linkedin.com/company/szaboscandic) 



**FGA purified MaxPab rabbit polyclonal antibody (D01P)** MaxPab®

Catalog # : H00002243-D01P

規格 : [ 100 ug ]

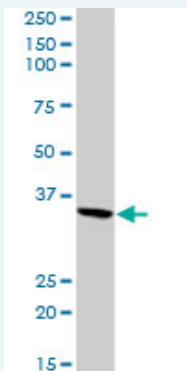
[List All](#)

**Specification**


<b>Product Description:</b>	Rabbit polyclonal antibody raised against a full-length human FGA protein.
<b>Immunogen:</b>	FGA (AAH20764.1, 1 a.a. ~ 218 a.a) full-length human protein.
<b>Sequence:</b>	MFSMRIVCLVLSVVGTAWTADSGEGDFLAEGGGVVRGPRVVERHQSAC KSDSWPFCSGEDWNYKCPGCRMKGLIDEVNQDFTNRINKLKNLFEY QKNNKDSHSLTTNIMEILRGDFSSANNRDNTYNRVSEDLRSRIEVLKRKVI EKVTANLLVARVTTEETPHLKARAIKWQMRPEVKPIMKEHIAPREAMLNL ALSEVSTLLLWGLPCPPRLS
<b>Host:</b>	Rabbit
<b>Reactivity:</b>	Human, Mouse
<b>Quality Control Testing:</b>	Antibody reactive against mammalian transfected lysate.
<b>Storage Buffer:</b>	In 1x PBS, pH 7.4
<b>Storage Instruction:</b>	Store at -20°C or lower. Aliquot to avoid repeated freezing and thawing.
<b>MSDS:</b>	 <a href="#">Download</a>
<b>Datasheet:</b>	 <a href="#">Download</a>

**Applications**

**Western Blot (Tissue lysate)**



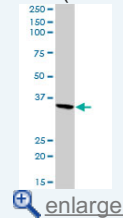
FGA MaxPab rabbit polyclonal antibody. Western Blot analysis of FGA expression in mouse kidney.

 [Protocol Download](#)

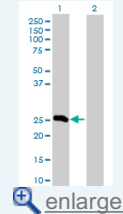
**Western Blot (Transfected lysate)**

**Application Image**

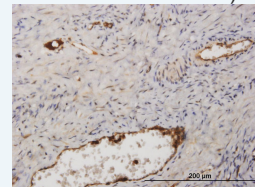
**Western Blot (Tissue lysate)**



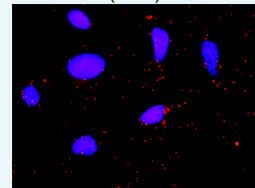
**Western Blot (Transfected lysate)**

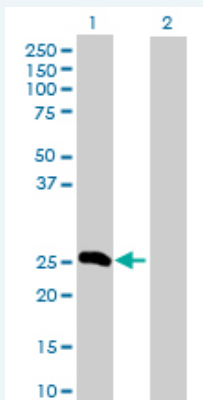


**Immunohistochemistry (Formalin/PFA-fixed paraffin-embedded sections)**



**In situ Proximity Ligation Assay (Cell)**



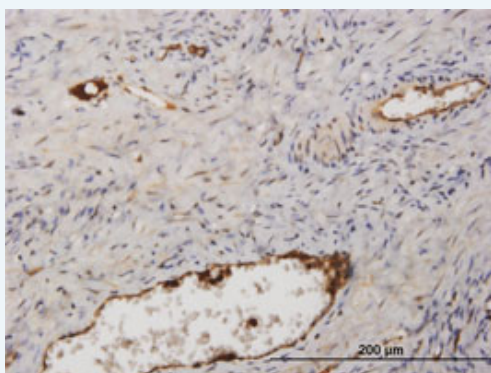


Western Blot analysis of FGA expression in transfected 293T cell line ([H00002243-T02](#)) by FGA MaxPab polyclonal antibody.

Lane 1: FGA transfected lysate(24.70 KDa).  
Lane 2: Non-transfected lysate.

[Protocol Download](#)

### Immunohistochemistry (Formalin/PFA-fixed paraffin-embedded sections)

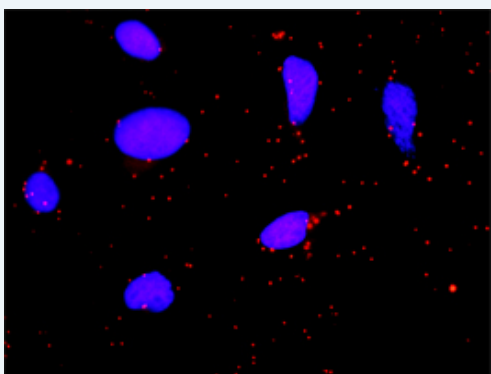


enlarge this image

Immunoperoxidase of purified MaxPab rabbit antibody to FGA on formalin-fixed paraffin-embedded human ovary. [antibody concentration 1.5 ug/ml]

[Protocol Download](#)

### In situ Proximity Ligation Assay (Cell)



Proximity Ligation Analysis of protein-protein interactions between FGA and F2. HeLa cells were stained with anti-FGA rabbit purified polyclonal 1:1200 and anti-F2 mouse monoclonal antibody 1:50. Each red dot represents the detection of protein-protein interaction complex, and nuclei were counterstained with DAPI (blue).

### Gene Information

Entrez GeneID: [2243](#)

GeneBank [BC020764](#)  
Accession#:

Protein [AAH20764.1](#)  
Accession#:

**Gene Name:** FGA

**Gene Alias:** Fib2,MGC119422,MGC119423,MGC119425

**Gene Description:** fibrinogen alpha chain

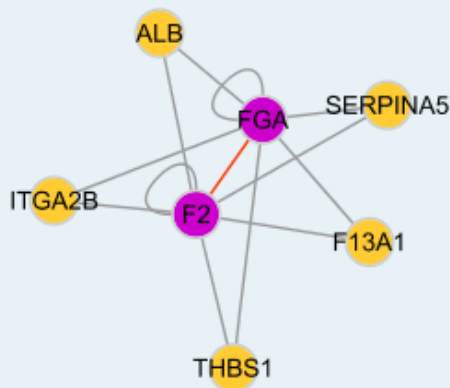
**Omim ID:** [105200](#), [134820](#), [202400](#)

**Gene Ontology:** [Hyperlink](#)

**Gene Summary:** The protein encoded by this gene is the alpha component of fibrinogen, a blood-borne glycoprotein comprised of three pairs of nonidentical polypeptide chains. Following vascular injury, fibrinogen is cleaved by thrombin to form fibrin which is the most abundant component of blood clots. In addition, various cleavage products of fibrinogen and fibrin regulate cell adhesion and spreading, display vasoconstrictor and chemotactic activities, and are mitogens for several cell types. Mutations in this gene lead to several disorders, including dysfibrinogenemia, hypofibrinogenemia, afibrinogenemia and renal amyloidosis. Alternative splicing results in two isoforms which vary in the carboxy-terminus. [provided by RefSeq]

**Other Designations:** fibrinogen, A alpha polypeptide,fibrinogen, alpha chain, isoform alpha preproprotein,fibrinogen, alpha polypeptide

### Interactome



### Gene Pathway

[Complement and coagulation cascades](#)

### Related Disease

[Alzheimer Disease](#) [Alzheimer disease](#) [Anemia, Sickle Cell](#) [Anemia, sickle cell](#) [Angina, Unstable](#) [Aortic Diseases](#) [Atherosclerosis](#) [Atherosclerosis](#) [Brain Ischemia](#) [Calcinosis](#) [Cardiovascular Diseases](#) [Carotid Artery Diseases](#) [Carotid Stenosis](#) [Cerebral Hemorrhage](#) [Cerebral Infarction](#) [Cerebrovascular Accident](#) [Cerebrovascular Disorders](#) [Chronic Disease](#) [Coronary Artery Disease](#)

... see more

