



SZABO SCANDIC

Part of Europa Biosite

Produktinformation



Forschungsprodukte & Biochemikalien



Zellkultur & Verbrauchsmaterial



Diagnostik & molekulare Diagnostik



Laborgeräte & Service

Weitere Information auf den folgenden Seiten!
See the following pages for more information!



Lieferung & Zahlungsart

siehe unsere [Liefer- und Versandbedingungen](#)

Zuschläge

- Mindermengenzuschlag
- Trockeneiszuschlag
- Gefahrgutzuschlag
- Expressversand

SZABO-SCANDIC HandelsgmbH

Quellenstraße 110, A-1100 Wien

T. +43(0)1 489 3961-0

F. +43(0)1 489 3961-7

mail@szabo-scandic.com

www.szabo-scandic.com

[linkedin.com/company/szaboscandic](https://www.linkedin.com/company/szaboscandic) 

FGB monoclonal antibody (M01), clone 1D7

Catalog # : H00002244-M01

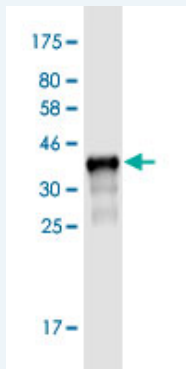
規格 : [100 ug]

[List All](#)

Specification

Product Description:	Mouse monoclonal antibody raised against a partial recombinant FGB.
Immunogen:	FGB (NP_005132, 392 a.a. ~ 491 a.a) partial recombinant protein with GST tag. MW of the GST tag alone is 26 KDa.
Sequence:	GENRTMTIHNGMFFSTYDRDNDGWLTSDPRKQCSKEDGGGWWYNYRC HAANPNGRYYWGGQYTWDMAKHGTDDGVWMMNWKGSWYSMRKMSM KIRPFFPQQ
Host:	Mouse
Reactivity:	Human, Rat
Isotype:	IgG2a Kappa

Quality Control Testing: Antibody Reactive Against Recombinant Protein.



Western Blot detection against Immunogen (36.74 KDa) .

Storage Buffer: In 1x PBS, pH 7.4

Storage Instruction: Store at -20°C or lower. Aliquot to avoid repeated freezing and thawing.

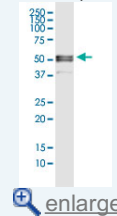
Datasheet: [Download](#)

Applications

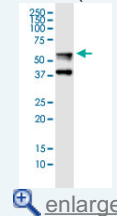
Western Blot (Cell lysate)

Application Image

Western Blot (Cell lysate)

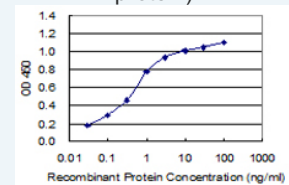


Western Blot (Cell lysate)



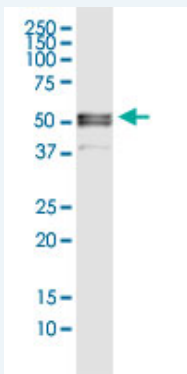
Western Blot (Recombinant protein)

Sandwich ELISA (Recombinant protein)



[enlarge](#)

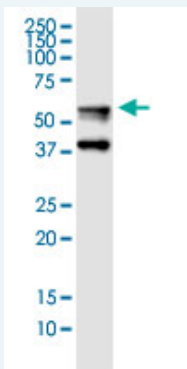
ELISA



FGB monoclonal antibody (M01), clone 1D7. Western Blot analysis of FGB expression in PC-12.

[Protocol Download](#)

Western Blot (Cell lysate)



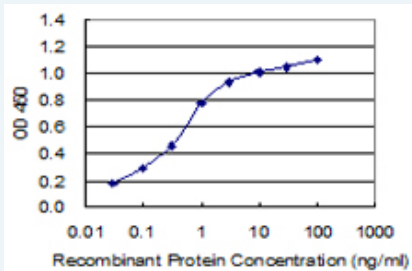
FGB monoclonal antibody (M01), clone 1D7. Western Blot analysis of FGB expression in HepG2.

[Protocol Download](#)

Western Blot (Recombinant protein)

[Protocol Download](#)

Sandwich ELISA (Recombinant protein)



Detection limit for recombinant GST tagged FGB is 0.3 ng/ml as a capture antibody.

[Protocol Download](#)

ELISA

Gene Information

Entrez GeneID: [2244](#)

GeneBank [NM_005141](#)

Accession#:

Protein [NP_005132](#)

Accession#:

Gene Name: FGB

Gene Alias: MGC104327, MGC120405

Gene fibrinogen beta chain

Description:

Omim ID: [134830](#), [202400](#)

Gene Ontology: [Hyperlink](#)

Gene Summary: The protein encoded by this gene is the beta component of fibrinogen, a blood-borne glycoprotein comprised of three pairs of nonidentical polypeptide chains. Following vascular injury, fibrinogen is cleaved by thrombin to form fibrin which is the most abundant component of blood clots. In addition, various cleavage products of fibrinogen and fibrin regulate cell adhesion and spreading, display vasoconstrictor and chemotactic activities, and are mitogens for several cell types. Mutations in this gene lead to several disorders, including afibrinogenemia, dysfibrinogenemia, hypodysfibrinogenemia and thrombotic tendency. [provided by RefSeq]

Other fibrinogen, B beta polypeptide, fibrinogen, beta chain

Designations:

Gene Pathway

[Complement and coagulation cascades](#)

Related Disease

[Abortion, Habitual](#) [Abortion, Spontaneous](#) [Abruptio Placentae](#) [Aggressive Periodontitis](#)
[Albuminuria](#) [Alveolar Bone Loss](#) [Alzheimer Disease](#) [Alzheimer disease](#)
[Amyotrophic Lateral Sclerosis](#) [Amyotrophic lateral sclerosis](#) [Anemia, Sickle Cell](#)
[Anemia, sickle cell](#) [Angina Pectoris](#) [Angina, Unstable](#) [Arterial Occlusive Diseases](#)
[Arteriosclerosis](#) [Arthritis, Rheumatoid](#) [Atherosclerosis](#) [Atherosclerosis](#)

... see more