



SZABO SCANDIC

Part of Europa Biosite

Produktinformation



Forschungsprodukte & Biochemikalien



Zellkultur & Verbrauchsmaterial



Diagnostik & molekulare Diagnostik



Laborgeräte & Service

Weitere Information auf den folgenden Seiten!
See the following pages for more information!



Lieferung & Zahlungsart

siehe unsere [Liefer- und Versandbedingungen](#)

Zuschläge

- Mindermengenzuschlag
- Trockeneiszuschlag
- Gefahrgutzuschlag
- Expressversand

SZABO-SCANDIC HandelsgmbH

Quellenstraße 110, A-1100 Wien

T. +43(0)1 489 3961-0

F. +43(0)1 489 3961-7

mail@szabo-scandic.com

www.szabo-scandic.com

[linkedin.com/company/szaboscandic](https://www.linkedin.com/company/szaboscandic) 

FGF1 purified MaxPab rabbit polyclonal antibody (D01P) MaxPab®

Catalog # : H00002246-D01P

規格 : [100 ug]

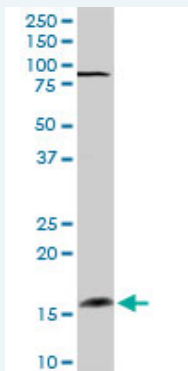
[List All](#)

Specification

Product Description:	Rabbit polyclonal antibody raised against a full-length human FGF1 protein.
Immunogen:	FGF1 (NP_000791.1, 1 a.a. ~ 155 a.a) full-length human protein.
Sequence:	MAEGEITFTALTEKFNLPNGYKPKLLYCSNGGHFLRILPDGTVDGTR DRSDQHIQLQLSAESVGEVYIKSTETGQYLAMDTDGLLYGSQTPNEECL FLERLEENHYNTYISKKHAENWVGLKKNKNGSCKRGPRTHYGQKAILFLP LPVSSD
Host:	Rabbit
Reactivity:	Human
Quality Control Testing:	Antibody reactive against mammalian transfected lysate.
Storage Buffer:	In 1x PBS, pH 7.4
Storage Instruction:	Store at -20°C or lower. Aliquot to avoid repeated freezing and thawing.
MSDS:	Download
Datasheet:	Download

Applications

Western Blot (Tissue lysate)



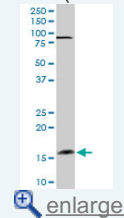
FGF1 MaxPab rabbit polyclonal antibody. Western Blot analysis of FGF1 expression in human placenta.

[Protocol Download](#)

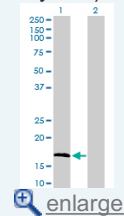
Western Blot (Transfected lysate)

Application Image

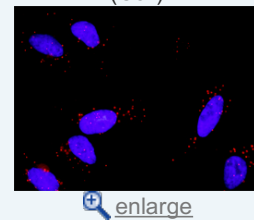
Western Blot (Tissue lysate)

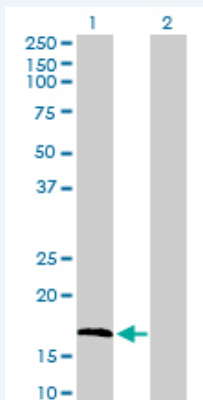


Western Blot (Transfected lysate)



In situ Proximity Ligation Assay (Cell)



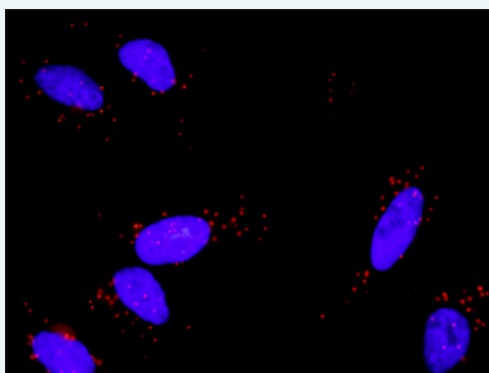


Western Blot analysis of FGF1 expression in transfected 293T cell line (H00002246-T01) by FGF1 MaxPab polyclonal antibody.

Lane 1: FGF1 transfected lysate(17.50 KDa).
Lane 2: Non-transfected lysate.

 Protocol Download

In situ Proximity Ligation Assay (Cell)



Proximity Ligation Analysis of protein-protein interactions between FGF1 and FGFR1. HeLa cells were stained with anti-FGF1 rabbit purified polyclonal 1:1200 and anti-FGFR1 mouse monoclonal antibody 1:50. Each red dot represents the detection of protein-protein interaction complex, and nuclei were counterstained with DAPI (blue).

Gene Information

Entrez GeneID: [2246](#)

GeneBank [NM_000800](#)
Accession#:

Protein [NP_000791.1](#)
Accession#:

Gene Name: FGF1

Gene Alias: AFGF, ECGF, ECGF-beta, ECGFA, ECGFB, FGF-alpha, FGFA, GLIO703, HBGF 1

Gene Description: fibroblast growth factor 1 (acidic)

Omim ID: [131220](#)

Gene Ontology: [Hyperlink](#)

Gene Summary: The protein encoded by this gene is a member of the fibroblast growth factor (FGF) family. FGF family members possess broad mitogenic and cell survival activities, and are involved in a variety of biological processes, including embryonic development, cell growth, morphogenesis, tissue repair, tumor growth and invasion. This protein functions as a modifier of endothelial cell migration and proliferation, as

well as an angiogenic factor. It acts as a mitogen for a variety of mesoderm- and neuroectoderm-derived cells in vitro, thus is thought to be involved in organogenesis. Multiple alternatively spliced variants encoding different isoforms have been described. [provided by RefSeq

Other Designations: OTTHUMP00000066028,OTTHUMP00000066030,OTTHUMP00000066031,OTTHUMP00000174675,endothelial cell growth factor, alpha,endothelial cell growth factor, beta,heparin-binding growth factor 1

Interactome



Gene Pathway

[MAPK signaling pathway](#) [Melanoma Pathways in cancer](#) [Regulation of actin cytoskeleton](#)

Related Disease

[Alzheimer Disease](#) [Alzheimer disease](#) [Arthritis, Psoriatic](#) [Cardiovascular Diseases](#) [Celiac Disease](#) [Chorioamnionitis](#) [Cleft Lip](#) [Cleft Palate](#) [Diabetes Complications](#) [Endometriosis](#) [Fetal Membranes, Premature Rupture](#) [Genetic Predisposition to Disease](#) [Hepatitis C, Chronic](#) [Hyperparathyroidism, Secondary](#) [Hypertension](#) [Intracranial Aneurysm](#) [Metabolic Syndrome X](#) [Multiple Sclerosis](#) [Neoplasms](#)

... see more

[服務條款](#) | [隱私權政策](#) | [著作及商標](#) | [網站地圖](#)

©2016 亞諾法生技股份有限公司 Abnova Corporation. 版權所有.